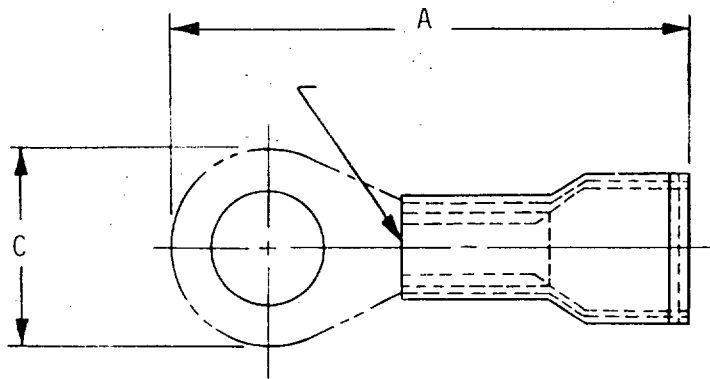
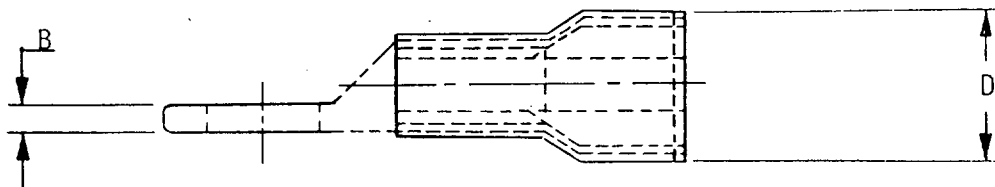


TERMINALS, LUG AND SPLICES, CONDUCTOR, CRIMP STYLE, COPPER
TERMINAL, LUG, CRIMP STYLE, COPPER, INSULATED, RING TONGUE,
FOR THIN WALL WIRE, TYPE II CLASS 1
FOR 105° C TOTAL CONDUCTOR TEMPERATURE

(Applicable Specification: MIL-T-7928/1)



DRAWING A



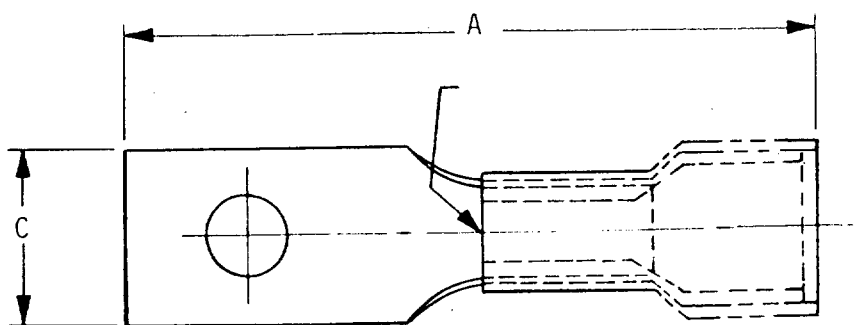
MIL-STD-1277B

PART NUMBER	TERMINAL SIZE	STUD SIZE	A MAX	B MAX	C MAX	D MAX
M7928/1- 1	26	.086	.740(18.79)	.028(0.71)	.210(5.33)	.280(7.11)
M7928/1- 2	26	.112	.786(19.95)	.028(0.71)	.260(6.60)	.280(7.11)
M7928/1- 3	26	.138	.886(22.50)	.028(0.71)	.260(6.60)	.280(7.11)
M7928/1- 4	26	.164	.886(22.50)	.028(0.71)	.330(8.38)	.280(7.11)
M7928/1- 5	26	.190	.886(22.50)	.028(0.71)	.330(8.38)	.280(7.11)
M7928/1- 6	24	.086	.740(18.79)	.028(0.71)	.210(5.33)	.280(7.11)
M7928/1- 7	24	.112	.786(19.96)	.028(0.71)	.260(6.60)	.280(7.11)
M7928/1- 8	24	.138	.886(22.50)	.028(0.71)	.260(6.60)	.280(7.11)
M7928/1- 9	24	.164	.886(22.50)	.028(0.71)	.330(8.38)	.280(7.11)
M7928/1-10	24	.190	.886(22.50)	.028(0.71)	.330(8.38)	.280(7.11)
M7928/1-11	22	.112	.801(20.34)	.037(0.94)	.230(5.84)	.280(7.11)
M7928/1-12	22	.138	.801(20.34)	.037(0.94)	.230(5.84)	.280(7.11)
M7928/1-13	22	.138	.911(23.14)	.037(0.94)	.260(6.60)	.280(7.11)
M7928/1-14	22	.164	.956(24.28)	.037(0.94)	.320(8.13)	.280(7.11)
M7928/1-15	22	.190	.956(24.28)	.037(0.94)	.320(8.13)	.280(7.11)
M7928/1-16	22	.250	1.136(28.85)	.037(0.94)	.437(11.10)	.280(7.11)
M7928/1-17	22	.312	1.136(28.85)	.037(0.94)	.437(11.10)	.280(7.11)
M7928/1-18	22	.375	1.366(34.70)	.037(0.94)	.540(13.72)	.280(7.11)
M7928/1-19	20	.500	1.355(34.70)	.037(0.94)	.720(18.29)	.280(7.11)
M7928/1-20	20	.112	.801(20.34)	.037(0.94)	.230(5.84)	.280(7.11)
M7928/1-21	20	.138	.801(20.34)	.037(0.94)	.230(5.84)	.280(7.11)
M7928/1-22	20	.138	.911(23.14)	.037(0.94)	.260(6.60)	.280(7.11)
M7928/1-23	20	.164	.956(24.28)	.037(0.94)	.320(8.13)	.280(7.11)
M7928/1-24	20	.190	.956(24.28)	.037(0.94)	.320(8.13)	.280(7.11)
M7928/1-25	20	.250	1.136(28.85)	.037(0.94)	.473(12.01)	.280(7.11)
M7928/1-26	20	.312	1.136(28.85)	.037(0.94)	.473(12.01)	.280(7.11)
M7928/1-27	20	.375	1.366(34.70)	.037(0.94)	.540(13.72)	.280(7.11)
M7928/1-28	18	.500	1.366(34.70)	.037(0.94)	.720(18.29)	.280(7.11)
M7928/1-29	18	.122	.801(20.34)	.037(0.94)	.230(5.84)	.280(7.11)
M7928/1-30	18	.138	.801(20.34)	.037(0.94)	.230(5.84)	.280(7.11)
M7928/1-31	18	.138	.911(23.14)	.037(0.94)	.260(6.60)	.280(7.11)
M7928/1-32	18	.164	.956(24.28)	.037(0.94)	.320(8.13)	.280(7.11)
M7928/1-33	18	.190	.956(24.28)	.037(0.94)	.320(8.13)	.280(7.11)
M7928/1-34	18	.250	1.136(28.85)	.037(0.94)	.473(12.01)	.280(7.11)
M7928/1-35	18	.312	1.136(28.85)	.037(0.94)	.473(12.01)	.280(7.11)
M7928/1-36	18	.375	1.366(34.70)	.037(0.94)	.540(13.72)	.280(7.11)
M7928/1-37	16	.500	1.366(34.70)	.037(0.94)	.720(18.29)	.280(7.11)
M7928/1-38	16	.112	.820(20.83)	.037(0.94)	.260(6.60)	.280(7.11)
M7928/1-39	16	.138	.820(20.83)	.037(0.94)	.260(6.60)	.280(7.11)
M7928/1-40	16	.138	.956(24.28)	.037(0.94)	.317(8.05)	.280(7.11)
M7928/1-41	16	.164	.956(24.28)	.037(0.94)	.317(8.05)	.280(7.11)
M7928/1-42	16	.190	.961(24.41)	.037(0.94)	.317(8.05)	.280(7.11)
M7928/1-43	16	.250	1.131(28.73)	.037(0.94)	.473(12.01)	.280(7.11)
M7928/1-44	16	.312	1.131(28.73)	.037(0.94)	.473(12.01)	.280(7.11)
M7928/1-45	16	.375	1.271(32.28)	.037(0.94)	.540(13.72)	.280(7.11)
M7928/1-46	14	.500	1.366(34.70)	.037(0.94)	.720(18.29)	.280(7.11)
M7928/1-47	14	.112	.820(20.83)	.037(0.94)	.260(6.60)	.280(7.11)

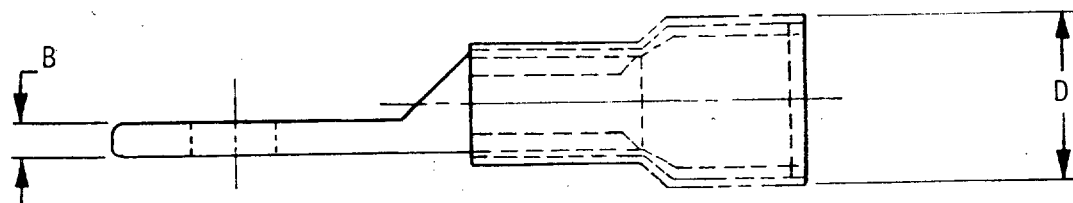
PART NUMBER	TERMINAL SIZE	STUD SIZE	A MAX	B MAX	C MAX	D MAX
M7928/1-48	14	.138	.820(20.83)	.037(0.94)	.260(6.60)	.280(7.11)
M7928/1-49	14	.138	.956(24.28)	.037(0.94)	.317(8.05)	.280(7.11)
M7928/1-50	14	.164	.956(24.28)	.037(0.94)	.317(8.05)	.280(7.11)
M7928/1-51	14	.190	.961(24.41)	.037(0.94)	.317(8.05)	.280(7.11)
M7928/1-52	14	.250	1.131(28.73)	.037(0.94)	.473(12.01)	.280(7.11)
M7928/1-53	14	.312	1.131(28.73)	.037(0.94)	.473(12.01)	.280(7.11)
M7928/1-54	14	.375	1.271(32.28)	.037(0.94)	.540(13.72)	.280(7.11)
M7928/1-55	14	.500	1.366(34.70)	.037(0.94)	.720(18.29)	.280(7.11)
M7928/1-56	12	.138	1.198(30.43)	.043(1.09)	.380(9.65)	.361(9.17)
M7928/1-57	12	.164	1.198(30.43)	.043(1.09)	.380(9.65)	.361(9.17)
M7928/1-58	12	.190	1.198(30.43)	.043(1.09)	.380(9.65)	.361(9.17)
M7928/1-59	12	.250	1.400(35.56)	.043(1.09)	.536(13.61)	.361(9.17)
M7928/1-60	12	.312	1.400(35.56)	.043(1.09)	.536(13.61)	.361(9.17)
M7928/1-61	12	.375	1.492(37.90)	.043(1.09)	.598(15.19)	.361(9.17)
M7928/1-62	12	.500	1.492(37.90)	.043(1.09)	.720(18.29)	.361(9.17)
M7928/1-63	10	.138	1.198(30.43)	.043(1.09)	.380(9.65)	.361(9.17)
M7928/1-64	10	.164	1.198(30.43)	.043(1.09)	.380(9.65)	.361(9.17)
M7928/1-65	10	.190	1.198(30.43)	.043(1.09)	.380(9.65)	.361(9.17)
M7928/1-66	10	.250	1.400(35.56)	.043(1.09)	.536(13.61)	.361(9.17)
M7928/1-67	10	.312	1.400(35.56)	.043(1.09)	.536(13.61)	.361(9.17)
M7928/1-68	10	.375	1.492(37.90)	.043(1.09)	.598(15.19)	.361(9.17)
M7928/1-69	10	.500	1.492(37.90)	.043(1.09)	.720(18.29)	.361(9.17)
M7928/1-70	22	.086	.790(20.06)	.037(0.94)	.230(5.84)	.280(7.11)
M7928/1-71	20	.086	.790(20.06)	.037(0.94)	.230(5.84)	.280(7.11)
M7928/1-72	18	.086	.790(20.06)	.037(0.94)	.230(5.84)	.280(7.11)

MIL-STD-1277B

TERMINALS, LUG AND SPLICES, CONDUCTOR, CRIMP STYLE, COPPER,
INSULATED, RECTANGULAR TONGUE, FOR THIN WALL WIRE, TYPE II
CLASS 1 FOR 105° TOTAL CONDUCTOR TEMPERATURE
(Applicable Specification: MIL-T-7928/2)



DRAWING A

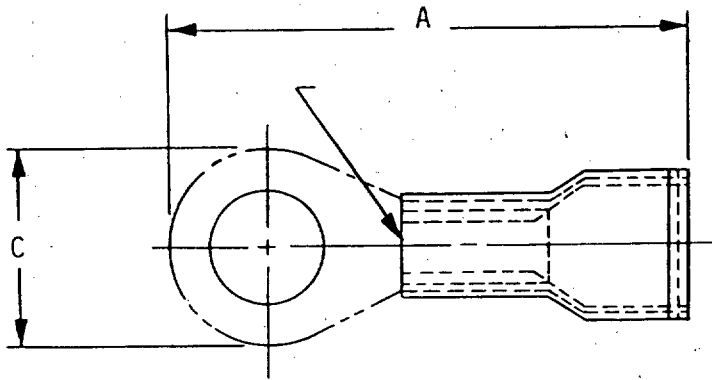


PART NUMBER	WIRE SIZE	STUD SIZE	A MAX	B	C	D MAX
M7928/2- 1	22	.112	.842(21.39)	.037(0.94)	.237(6.02)	.280(7.11)
M7928/2- 2	22	.112	1.061(26.95)	.037(0.94)	.237(6.02)	.280(7.11)
M7928/2- 3	22	.125	.905(22.99)	.037(0.94)	.277(7.03)	.280(7.11)
M7928/2- 4	22	.138	1.061(26.95)	.037(0.94)	.237(6.02)	.280(7.11)
M7928/2- 5	22	.138	1.155(29.34)	.037(0.94)	.302(7.67)	.280(7.11)
M7928/2- 6	22	.164	1.155(29.34)	.037(0.94)	.302(7.67)	.280(7.11)
M7928/2- 7	22	.164	1.405(35.69)	.037(0.94)	.390(9.91)	.280(7.11)
M7928/2- 8	20	.112	.842(21.39)	.037(0.94)	.237(6.02)	.280(7.11)
M7928/2- 9	20	.112	1.061(26.95)	.037(0.94)	.237(6.02)	.280(7.11)
M7928/2-10	20	.125	.905(22.99)	.037(0.94)	.277(7.03)	.280(7.11)
M7928/2-11	20	.138	1.061(26.95)	.037(0.94)	.237(6.02)	.280(7.11)
M7928/2-12	20	.138	1.155(29.34)	.037(0.94)	.302(7.67)	.280(7.11)
M7928/2-13	20	.164	1.155(29.34)	.037(0.94)	.302(7.67)	.280(7.11)
M7928/2-14	20	.164	1.405(35.69)	.037(0.94)	.390(9.91)	.280(7.11)
M7928/2-15	18	.112	.842(21.39)	.037(0.94)	.237(6.02)	.280(7.11)
M7928/2-16	18	.112	1.061(26.95)	.037(0.94)	.237(6.02)	.280(7.11)
M7928/2-17	18	.125	.905(22.99)	.037(0.94)	.277(7.03)	.280(7.11)
M7928/2-18	18	.138	1.061(26.95)	.037(0.94)	.237(6.02)	.280(7.11)
M7928/2-19	18	.138	1.155(29.34)	.038(0.94)	.302(7.67)	.280(7.11)
M7928/2-20	18	.164	1.155(29.34)	.037(0.94)	.302(7.67)	.280(7.11)
M7928/2-21	18	.164	1.405(35.69)	.037(0.94)	.390(9.91)	.280(7.11)
M7928/2-22	16	.112	.842(21.39)	.037(0.94)	.237(6.02)	.280(7.11)
M7928/2-23	16	.112	1.061(26.95)	.037(0.94)	.237(6.02)	.280(7.11)
M7928/2-24	16	.125	.905(22.99)	.037(0.94)	.277(7.03)	.280(7.11)
M7928/2-25	16	.138	1.061(26.95)	.037(0.94)	.237(6.02)	.280(7.11)
M7928/2-26	16	.138	1.155(29.34)	.037(0.94)	.302(7.67)	.280(7.11)
M7928/2-27	16	.164	1.155(29.34)	.037(0.94)	.302(7.67)	.280(7.11)
M7928/2-28	16	.164	1.405(35.69)	.037(0.94)	.390(9.91)	.280(7.11)
M7928/2-29	14	.112	.842(21.39)	.037(0.94)	.237(6.02)	.280(7.11)
M7928/2-30	14	.112	1.061(26.95)	.037(0.94)	.237(6.02)	.280(7.11)
M7928/2-31	14	.125	.905(22.99)	.037(0.94)	.277(7.03)	.280(7.11)
M7928/2-32	14	.138	1.061(26.95)	.037(0.94)	.237(6.02)	.280(7.11)
M7928/2-33	14	.138	1.155(29.34)	.037(0.94)	.302(7.67)	.280(7.11)
M7928/2-34	14	.164	1.155(29.34)	.037(0.94)	.302(7.67)	.280(7.11)
M7928/2-35	14	.164	1.405(35.69)	.037(0.94)	.390(9.91)	.280(7.11)
M7928/2-36	12	.112	1.062(26.97)	.046(1.17)	.237(6.02)	.361(9.17)
M7928/2-37	12	.112	1.281(32.54)	.046(1.17)	.237(6.02)	.361(9.17)
M7928/2-38	12	.125	1.124(28.55)	.046(1.17)	.277(7.03)	.361(9.17)
M7928/2-39	12	.138	1.281(32.54)	.046(1.17)	.237(6.02)	.361(9.17)
M7928/2-40	12	.138	1.359(34.52)	.046(1.17)	.302(7.67)	.361(9.17)
M7928/2-41	12	.164	1.359(34.52)	.046(1.17)	.302(7.67)	.361(9.17)
M7928/2-42	12	.164	1.609(40.87)	.046(1.17)	.390(9.91)	.361(9.17)
M7928/2-43	10	.112	1.062(26.97)	.046(1.17)	.237(6.02)	.361(9.17)
M7928/2-44	10	.112	1.281(32.54)	.046(1.17)	.237(6.02)	.361(9.17)
M7928/2-45	10	.125	1.124(28.55)	.046(1.17)	.277(7.03)	.361(9.17)
M7928/2-46	10	.138	1.281(32.54)	.046(1.17)	.237(6.02)	.361(9.17)
M7928/2-47	10	.138	1.359(34.52)	.046(1.17)	.302(7.67)	.361(9.17)
M7928/2-48	10	.164	1.359(34.52)	.046(1.17)	.302(7.67)	.361(9.17)
M7928/2-49	10	.164	1.609(40.87)	.046(1.17)	.390(9.91)	.361(9.17)

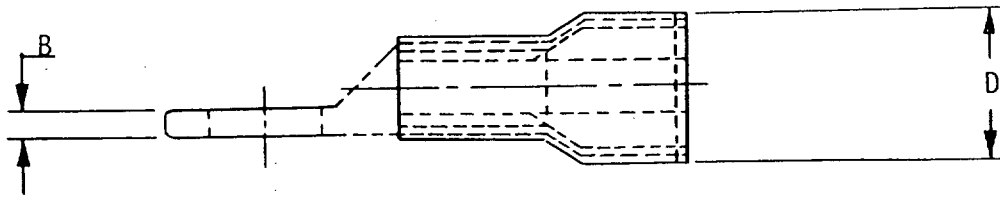
MIL-STD-1277B

TERMINALS, LUG AND SPLICES, CONDUCTOR, CRIMP STYLE, COPPER
TERMINAL, LUG, INSULATED, RING TONGUE, BELL-MOUTHED, TYPE II, CLASS 1
(FOR 150° C TOTAL CONDUCTOR TEMPERATURE)

(Applicable Specification: MIL-T-7928/4)



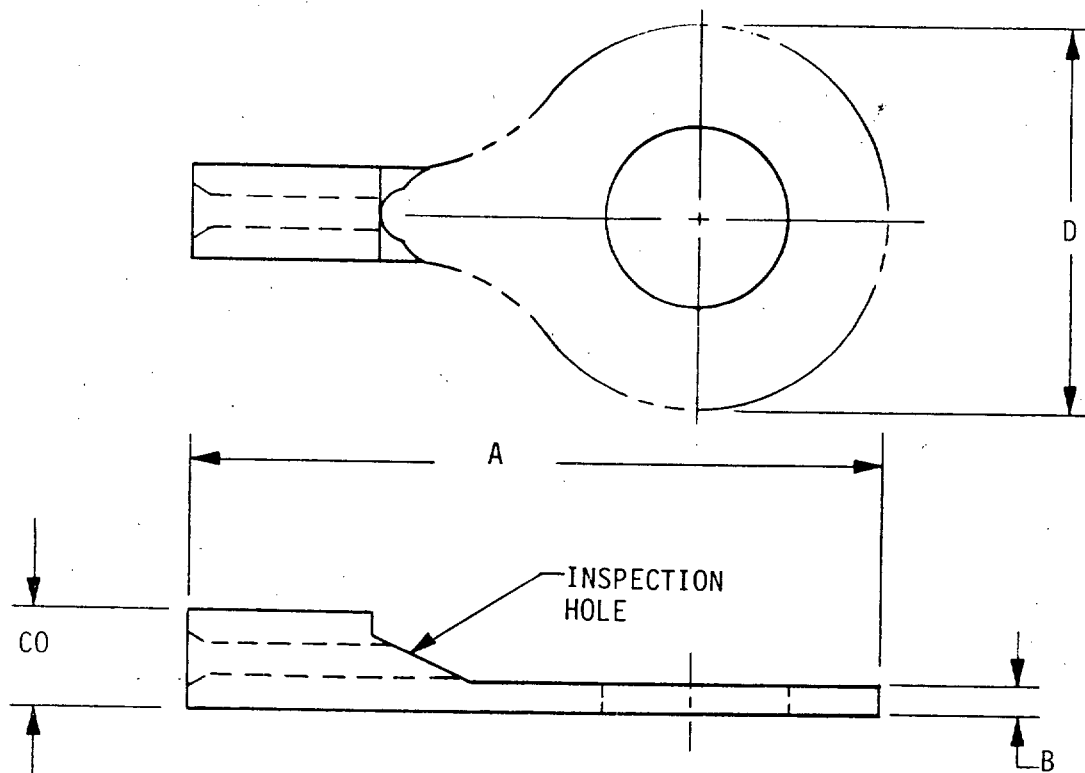
DRAWING A



PART NUMBER	STUD SIZE	STUD SIZE	A MAX	B MAX	C MAX	D MAX
M7928/4-143	26-24	.086	.740(18.79)	.028(0.71)	.210(5.33)	.280(7.11)
M7928/4-144	26-24	.112	.755(19.18)	.028(0.71)	.260(6.60)	.280(7.11)
M7928/4-145	26-24	.138	.855(21.72)	.028(0.71)	.260(6.60)	.280(7.11)
M7928/4-146	26-24	.164	.855(21.72)	.028(0.71)	.330(8.38)	.280(7.11)
M7928/4-147	26-24	.190	.865(21.97)	.028(0.71)	.330(8.38)	.280(7.11)
M7928/4-159	22-18	.086	.755(19.18)	.035(0.89)	.230(5.84)	.280(7.11)
M7928/4-148	22-18	.112	.755(19.18)	.035(0.89)	.230(5.84)	.280(7.11)
M7928/4-101	22-18	.138	.755(19.18)	.035(0.89)	.230(5.84)	.280(7.11)
M7928/4-102	22-18	.138	.865(21.97)	.035(0.89)	.260(6.60)	.280(7.11)
M7928/4-149	22-18	.164	.910(23.11)	.035(0.89)	.320(8.13)	.280(7.11)
M7928/4-103	22-18	.190	.910(23.11)	.035(0.89)	.473(12.01)	.280(7.11)
M7928/4-150	22-18	.250	1.090(27.68)	.035(0.89)	.473(12.01)	.280(7.11)
M7928/4-104	22-18	.312	1.090(27.68)	.035(0.89)	.473(12.01)	.280(7.11)
M7928/4-105	22-18	.375	1.320(33.53)	.035(0.89)	.540(13.72)	.280(7.11)
M7928/4-151	22-18	.500	1.320(33.53)	.035(0.89)	.720(18.29)	.280(7.11)
M7928/4-152	16-14	.112	.774(19.66)	.035(0.89)	.260(6.60)	.280(7.11)
M7928/4-106	16-14	.138	.774(19.66)	.035(0.89)	.260(6.60)	.280(7.11)
M7928/4-107	16-14	.138	.910(23.11)	.035(0.89)	.317(8.05)	.280(7.11)
M7928/4-153	16-14	.164	.910(23.11)	.035(0.89)	.317(8.05)	.280(7.11)
M7928/4-108	16-14	.190	.915(23.24)	.035(0.89)	.317(8.05)	.280(7.11)
M7928/4-154	16-14	.250	1.085(27.56)	.035(0.89)	.473(12.01)	.280(7.11)
M7928/4-109	16-14	.312	1.085(27.56)	.035(0.89)	.473(12.01)	.280(7.11)
M7928/4-110	16-14	.375	1.225(31.11)	.035(0.89)	.540(13.72)	.280(7.11)
M7928/4-155	16-14	.500	1.320(33.53)	.035(0.89)	.720(18.29)	.280(7.11)
M7928/4-111	12-10	.138	1.120(28.45)	.043(1.09)	.380(9.65)	.361(9.17)
M7928/4-156	12-10	.164	1.120(28.45)	.043(1.09)	.380(9.65)	.361(9.17)
M7928/4-112	12-10	.190	1.120(28.45)	.043(1.09)	.380(9.65)	.361(9.17)
M7928/4-157	12-10	.250	1.322(33.58)	.043(1.09)	.536(13.61)	.361(9.17)
M7928/4-113	12-10	.312	1.322(33.58)	.043(1.09)	.536(13.61)	.361(9.17)
M7928/4-114	12-10	.375	1.414(35.91)	.043(1.09)	.598(15.19)	.361(9.17)
M7928/4-158	12-10	.500	1.414(35.91)	.043(1.09)	.720(18.29)	.361(9.17)
M7928/4-115	8	.190	1.402(35.61)	.084(2.13)	.429(10.90)	.361(9.17)
M7928/4-116	8	.250	1.466(37.24)	.084(2.13)	.478(12.14)	.361(9.17)
M7928/4-117	8	.312	1.544(39.22)	.084(2.13)	.590(14.99)	.361(9.17)
M7928/4-118	8	.375	1.544(39.22)	.084(2.13)	.590(14.99)	.361(9.17)
M7928/4-119	6	.190	1.599(40.61)	.084(2.13)	.503(12.78)	.361(9.17)
M7928/4-120	6	.250	1.599(40.61)	.084(2.13)	.503(12.78)	.361(9.17)
M7928/4-121	6	.312	1.762(44.75)	.084(2.13)	.623(15.82)	.361(9.17)
M7928/4-122	6	.375	1.762(44.75)	.084(2.13)	.623(15.82)	.361(9.17)
M7928/4-123	4	.250	1.812(46.02)	.096(2.44)	.570(14.48)	.361(9.17)
M7928/4-124	4	.312	1.879(47.73)	.096(2.44)	.648(16.46)	.361(9.17)
M7928/4-125	4	.375	1.879(47.73)	.096(2.44)	.648(16.46)	.361(9.17)
M7928/4-126	2	.250	2.069(52.55)	.109(2.77)	.711(18.06)	.361(9.17)
M7928/4-127	2	.375	2.069(52.55)	.109(2.77)	.711(18.06)	.361(9.17)
M7928/4-128	2	.500	2.069(57.63)	.109(2.77)	.804(20.42)	.361(9.17)
M7928/4-129	1	.250	2.150(54.61)	.125(3.17)	.783(19.89)	.361(9.17)
M7928/4-130	1	.375	2.150(54.61)	.125(3.17)	.783(19.89)	.361(9.17)
M7928/4-131	1	.500	2.370(60.20)	.125(3.17)	.887(22.53)	.361(9.17)
M7928/4-132	0	.250	2.401(60.98)	.125(3.17)	.853(21.67)	.361(9.17)
M7928/4-133	0	.375	2.401(60.98)	.125(3.17)	.853(21.67)	.361(9.17)
M7928/4-134	0	.500	2.525(64.13)	.125(3.17)	.903(22.94)	.361(9.17)
M7928/4-135	00	.312	2.750(69.85)	.129(3.28)	.956(24.28)	.361(9.17)
M7928/4-136	00	.375	2.750(69.85)	.129(3.28)	.956(24.28)	.361(9.17)
M7928/4-137	00	.500	2.750(69.85)	.129(3.28)	.956(24.28)	.361(9.17)

MIL-STD-1277B

TERMINAL LUG AND SPLICES, CONDUCTOR, CRIMP STYLE, COPPER
 TERMINAL LUG, CRIMP STYLE, COPPER, UNINSULATED, RING TONGUE
 TYPE I, CLASS I
 FOR 175° C TOTAL CONDUCTOR TEMPERATURE
 (Applicable Specification: MIL-T-7928/7)



PART NUMBER	TERMINAL SIZE	STUD SIZE	A MAX	B MAX	C MAX DIA.	D MAX
M7928/7- 1	22-18	.086	.560(14.22)	.037(0.94)	.165(4.19)	.230(5.84)
M7928/7- 2	22-18	.112	.560(14.22)	.037(0.94)	.165(4.19)	.230(5.84)
M7928/7- 3	22-18	.138	.747(18.97)	.037(0.94)	.165(4.19)	.320(8.13)
M7928/7- 4	22-18	.190	.747(18.97)	.037(0.94)	.165(4.19)	.320(8.13)
M7928/7- 5	22-18	.312	.953(24.21)	.037(0.94)	.165(4.19)	.540(13.72)
M7928/7- 6	22-18	.375	1.125(28.57)	.037(0.94)	.165(4.19)	.609(15.47)
M7928/7- 7	16-14	.138	.747(18.97)	.037(0.94)	.192(4.88)	.320(8.13)
M7928/7- 8	16-14	.190	.747(18.97)	.037(0.94)	.192(4.88)	.320(8.13)
M7928/7- 9	16-14	.312	.953(24.21)	.037(0.94)	.192(4.88)	.540(13.72)
M7928/7-10	16-14	.375	1.125(28.57)	.037(0.94)	.192(4.88)	.609(15.47)
M7928/7-11	16-14	.112	.560(14.22)	.037(0.94)	.192(4.88)	.250(6.35)

SECTION 204

TERMINALS, LUG, CABLE, CRIMP,
TYPE CLC

MIL-T-16366

Type CLC lug terminals shall be furnished in accordance with the following table.

Number to appear on lug terminal	Navy cable		Width (max)	1 bolt hole		2 bolt holes	
	Standard cable designation	Ampere rating (Max)		Bolt hole diameter nominal	Length (max)	Bolt hole diameter	Length (max)
14	14(7)	92	0.62 (15.75)	0.28 (7.11)	1.38 (35.05)	0.28 (7.11)	---
23	23(7)	117	0.69 (17.53)	0.28 (7.11)	1.50 (38.10)	0.28 (7.11)	---
30	30(19)	142	0.69 (17.53)	0.28 (7.11)	1.88 (47.75)	0.28 (7.11)	2.56 (65.02)
40	40(19)	165	0.69 (17.53)	0.28 (7.11)	1.88 (47.75)	0.28 (7.11)	2.38 (60.45)
50	50(19)	189	0.69 (17.53)	0.34 (8.64)	2.06 (52.32)	0.31 (7.87)	2.81 (71.42)
60	60(37)	215	0.75 (19.05)	0.34 (8.64)	2.06 (52.32)	0.31 (7.87)	2.75 (69.85)
75	75(37)	253	0.75 (19.05)	0.34 (8.64)	2.12 (53.85)	0.34 (8.64)	2.94 (74.68)
100	100(61)	300	0.88 (22.35)	0.34 (8.64)	2.12 (53.85)	0.34 (8.64)	2.88 (73.15)
125	125(61)	345	0.94 (23.88)	0.56 (14.22)	2.38 (60.45)	0.34 (8.64)	3.00 (76.20)
150	150(61)	400	1.00 (25.40)	0.56 (14.22)	2.75 (69.85)	0.38 (9.65)	3.44 (87.38)
200	200(61)	465	1.25 (31.75)	0.56 (14.22)	2.88 (73.15)	0.38 (9.65)	3.56 (90.42)
250	250(61)	540	1.25 (31.75)	0.56 (14.22)	3.00 (76.20)	0.44 (11.18)	3.44 (87.38)
300	300(91)	595	1.50 (38.10)	0.56 (14.22)	3.56 (90.42)	0.44 (11.18)	3.44 (87.38)
400	400(127)	740	1.62 (41.15)	0.56 (14.22)	3.81 (96.77)	0.44 (11.18)	4.62 (117.35)
500	500(127)	860	1.62 (41.15)	0.69 (17.53)	4.31 (109.47)	0.44 (11.18)	4.81 (132.17)
650	650(127)	1000	1.88 (47.75)	0.69 (17.53)	5.25 (133.35)	0.44 (11.18)	5.69 (144.53)
800	800(127)	1190	2.00 (50.80)	0.69 (17.53)	5.62 (142.75)	0.44 (11.18)	6.69 (169.93)
1000	1000(127)	1375	2.38 (60.45)	0.81 (20.57)	6.00 (152.40)	0.56 (14.22)	6.88 (174.75)
1600	1600(127)	1800	2.88 (73.15)	0.81 (20.57)	6.50 (165.10)	0.56 (14.22)	7.25 (184.15)