

HIGH-QUALITY;

LOW-COST;

RELIABLE & PERFECT;

SUPERIOR CUSTOMER SERVICE;

HOW DO WE DO IT?

Inte-Auto Technology Committed to Providing the Best Value with Superior Customer Service:

Inte-Auto Technology is dedicated to electrical connector solutions for any industry. The replacement connectors are used in the very same applications as OEMs connectors. Inte-Auto has exactly what you need, when you need it at an unbeatable price.

Professional Connector Application Solutions:

Provide Connector Application Solutions.

Technology Creates Value.

Reliable and Perfect Connection System.

Commitment to Evolution.

Electrical Connectors for Main Industry:

Oil and Gas; Military and Aerospace; Nuclear Technology; Industrial Control; Medical apparatus; Test and Measurement; Machine Manufacturer Industry; Audio/Video; Communications; Automotive; Power; Vehicle testing facilities; Military Industry;

INT13-08 Series Industrial Connector

UTO/UTOW/UTS Series Features & Benefits

WATER PROOF	IP68/69K Dynamic Mated Ideal for outdoor and indoor dynamic applications requiring continuous underwater immersion, routine pressure washing
Signal Integrity	EMI Shielded 65 dB at 100 Mhz: Qualified and compatible to be used in electromagnetic radiation areas and ensures proper signal integrity and transmission. And dust protection.
Corrosion Resistant	Salt Spray 48 & 96 Hours Designed to withstand climate ingress and exposure to salt spray or corrosive atmospheres while still maintaining mechanical and electrical functionality
Quick Mating	1/3 Bayonet Coupling With only 1/3 twist of the bayonet coupling system, connectors are mated with audible "click" and tactile feel to confirm proper mating.
Cost savings	Mixed Power & Signal Layouts Power supply and signal transmission can be combined in a unique interconnect solution to reduce system complexity and

Typical Applications


Energy - Power

Telecom

Instrumentation

Robotics - Machine tools

Railway

Building Automation

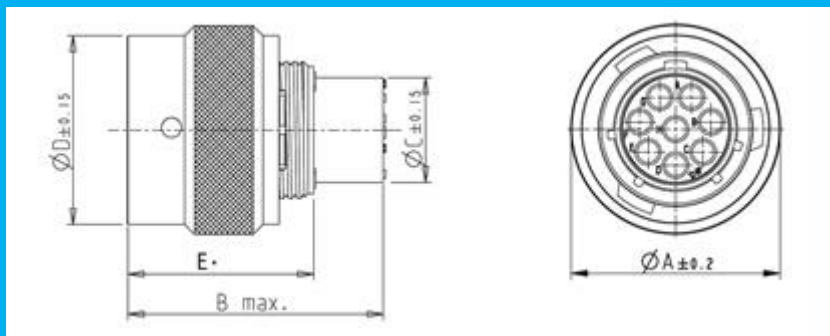
UTO Series Waterproof Metal Industry connector, IP67/IP68/IP69K

UTO Series

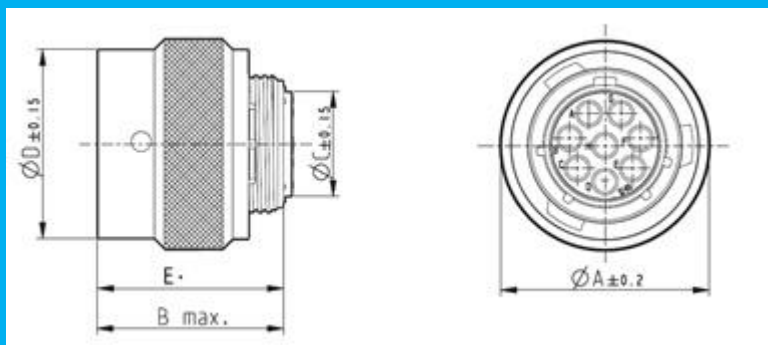


UTO Technical Characters:

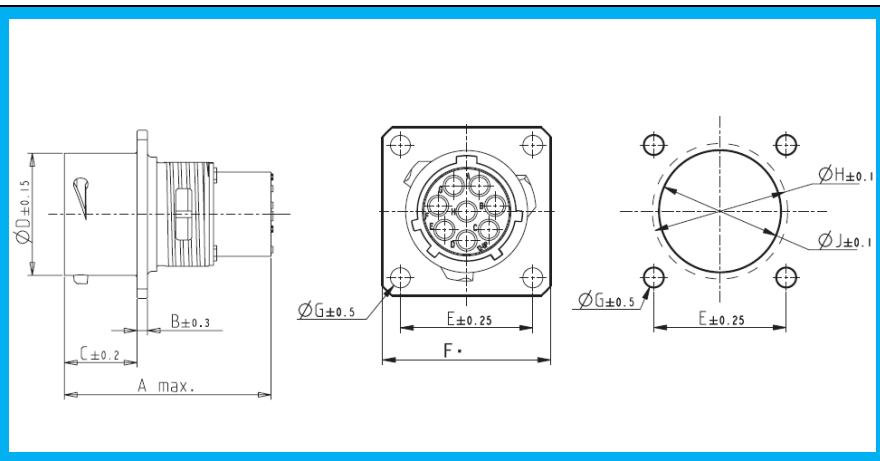
Operating Temperature	from -40°C to +105°C
Test voltage	2000VAC
Lifetime	500 times
Insulation Resistance	More than 5000 MΩ.
Salt spray	Per MIL-STD-202 method 101- 48 h (standard version)- 96 h (black anodized coupling ring)Higher salt spray resistance (200/500 h)upon request
Shielding Effectiveness	65 dB at 100 MHz
Sealing	Dynamic IP67 / IP68(under 10 m of water during 1 week) / IP69K in mated condition and in combination with sealed backshell.
Fluid resistance	- Gas and oil - Mineral oil - Acid bath - Basic bath
Materials	- Shell: Zinc alloy - Backshells and cable glands: Brass - Coupling ring: Aluminum alloy - Coupling spring: Spring stainless steel - Insert: Glass-filled thermoplastic

UTO Series Product guide:
Wire plug with male contact


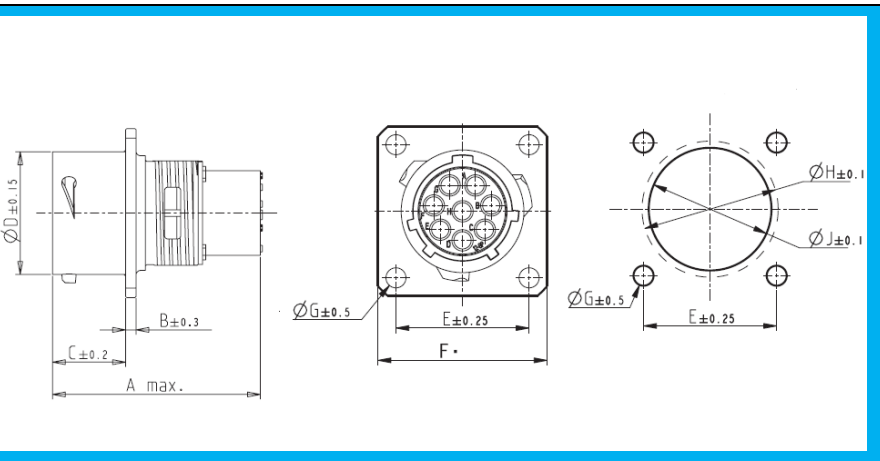
Part No.	Size	A ± 0.2	B Max	$\Phi C \pm 0.15$	$\Phi D \pm 0.15$	E ± 0.25
INTO6104PH	10	21.6	31.8	10.2	12.3	19.1
INTO6128PH	12	24.8		13.4	15.1	
INTO61412PH	14	28.0		16.7	18.3	
INTO61619PH	16	31.2		19.7	21.5	
INTO61823PH	18	34.3		21.7	24.0	
INTO62028PH	20	37.5		24.9	27.2	
INTO62235PH	22	40.7		28.1	30.4	
INTO62448PH	24	43.9		31.2	33.5	

Wire Plug with female contact


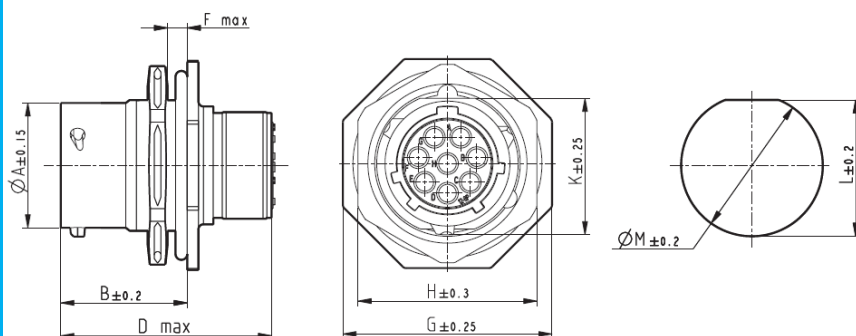
Part No.	Size	A ± 0.2	B Max	$\Phi C \pm 0.15$	$\Phi D \pm 0.15$	E ± 0.25
INTO6104SH	10	21.6	24.2	10.2	12.3	19.1
INTO6128SH	12	24.8		13.4	15.1	
INTO61412SH	14	28.0		16.7	18.3	
INTO61619SH	16	31.2		19.7	21.5	
INTO61823SH	18	34.3		21.7	24.0	
INTO62028SH	20	37.5	24.9	24.9	27.2	
INTO62235SH	22	40.7	26.2	28.1	30.4	
INTO62448SH	24	43.9		31.2	33.5	

Receptacle with male contact


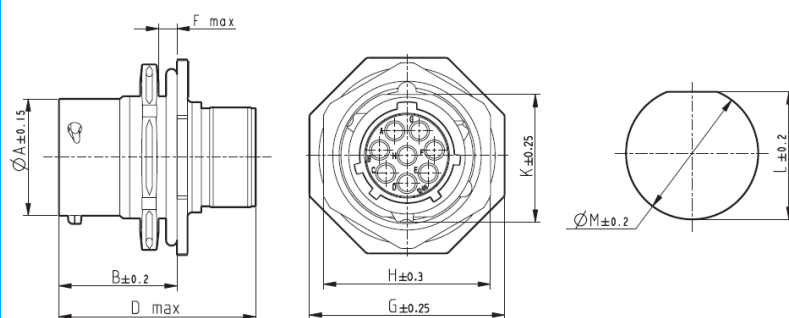
PN		Size	A Max	B ± 0.3	C ± 0.2	ΦD ± 0.15	E ± 0.25	F ± 0.25	ΦG ± 0.1	ΦH ± 0.1	ΦJ ± 0.1
IP67	IP68										
INTO0104PH	INTO0104PH6	10	31.7	1.6	11.3	15.0	18.3	23.8	3.2	17.3	15.1
INTO0128PH	INTO0128PH6	12				19.0	20.6	26.2		21.8	18.2
INTO01412PH	INTO01412PH6	14				22.2	23.0	8.6		25.0	21.4
INTO01619PH	INTO01619PH6	16				25.3	24.6	31.0		28.1	24.6
INTO01823PH	INTO01823PH6	18				28.5	26.9	33.3		31.3	27.8
INTO02028PH	INTO02028PH6	20	33.3	2.4	14.5	31.7	29.4	36.5	3.9	34.5	30.9
INTO02235PH	INTO02235PH6	22				34.9	31.8	39.7		37.7	34.1
INTO02448PH	INTO02448PH6	24				15.3	38.0	34.9		40.9	37.3

Receptacle with female contact


PN		SIZE	A Max	B ± 0.3	C ± 0.2	ΦD ± 0.15	E ± 0.25	F ± 0.25	ΦG ± 0.1	ΦH ± 0.1	ΦJ ± 0.1
IP67	IP68										
INTO0104SH	INTO0104SH6	10	31.7	1.6	11.3	15.0	18.3	23.8	3.2	17.3	15.1
INTO0128SH	INTO0128SH6	12				19.0	20.6	26.2		21.8	18.2
INTO01412SH	INTO01412SH6	14				22.2	23.0	8.6		25.0	21.4
INTO01619SH	INTO01619SH6	16				25.3	24.6	31.0		28.1	24.6
INTO01823SH	INTO01823SH6	18				28.5	26.9	33.3		31.3	27.8
INTO02028SH	INTO02028SH6	20	33.3	2.4	14.5	31.7	29.4	36.5	3.9	34.5	30.9
INTO02235SH	INTO02235SH6	22				34.9	31.8	39.7		37.7	34.1
INTO02448SH	INTO02448SH6	24				15.3	38.0	34.9		40.9	37.3

Receptacle with male contact


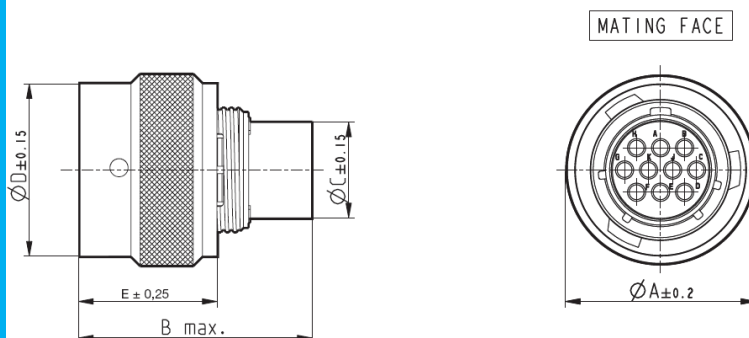
PN		SIZE	ΦA ± 0.15	B ± 0.2	D Max	F Max	G ± 0.25	H ± 0.3	K ± 0.25	L ± 0.2	ΦM ± 0.2
IP67	IP68										
INTO7104PH	INTO7104PH6	10	14.9	18.0	31.7	3.2	27.0	22.2	16.6	17.0	17.7
INTO7128PH	INTO7128PH6	12	19.0				31.8	27.0	20.8	21.2	22.5
INTO71412PH	INTO71412PH6	14	22.2				34.9	30.2	23.9	24.3	25.7
INTO71619PH	INTO71619PH6	16	25.3				38.1	33.3	27.1	27.5	28.7
INTO71823PH	INTO71823PH6	18	28.5				41.3	36.5	30.3	30.6	32.0
INTO72028PH	INTO72028PH6	20	31.7	22.7	33.3	6.4	46.1	39.7	33.4	33.8	35.2
INTO72235PH	INTO72235PH6	22	34.9				49.2	42.9	36.6	37.0	38.4
INTO72448PH	INTO72448PH6	24	38.0				52.4	46.0	39.8	40.1	41.5

Receptacle with Female contact


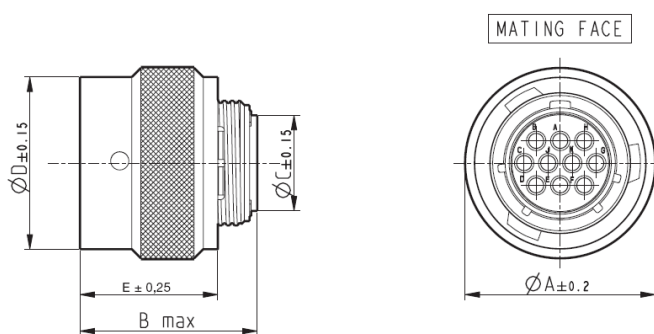
PN		SIZE	ΦA ± 0.15	B ± 0.2	D Max	F Max	G ± 0.25	H ± 0.3	K ± 0.25	L ± 0.2	ΦM ± 0.2
IP67	IP68										
INTO7104SH	INTO7104SH6	10	14.9	18.0	31.7	3.2	27.0	22.2	16.6	17.0	17.7
INTO7128SH	INTO7128SH6	12	19.0				31.8	27.0	20.8	21.2	22.5
INTO71412SH	INTO71412SH6	14	22.2				34.9	30.2	23.9	24.3	25.7
INTO71619SH	INTO71619SH6	16	25.3				38.1	33.3	27.1	27.5	28.7
INTO71823SH	INTO71823SH6	18	28.5				41.3	36.5	30.3	30.6	32.0
INTO72028SH	INTO72028SH6	20	31.7	22.7	33.3	6.4	46.1	39.7	33.4	33.8	35.2
INTO72235SH	INTO72235SH6	22	34.9				49.2	42.9	36.6	37.0	38.4
INTO72448SH	INTO72448SH6	24	38.0				52.4	46.0	39.8	40.1	41.5

UTOW Series Waterproof Metal Industry connector,IP67/IP68/IP69K**UTOW Technical Characters:**

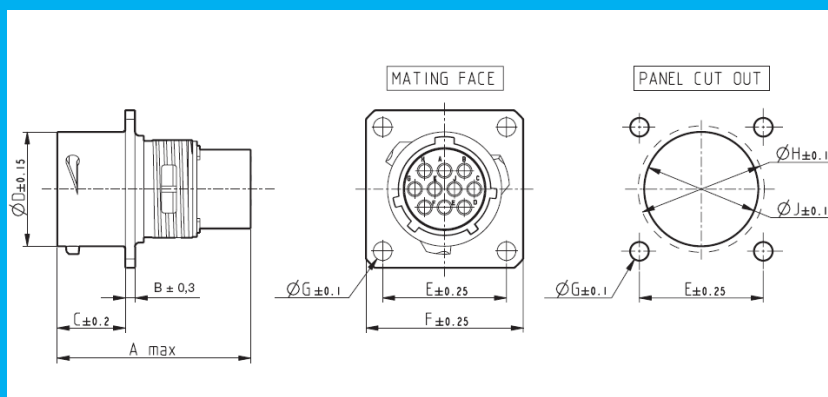
Operating Temperature	from -40°C to +105°C
Test voltage	1500VAC
Lifetime	500 times
Insulation Resistance	More than 5000 MΩ.
Salt spray	Per MIL-STD-202 method 101- 48 h (standard version)- 96 h (black anodized coupling ring)Higher salt spray resistance (200/500 h)upon request
Shielding effectiveness	65 dB at 10 MHz
Sealing	Dynamic IP67 / IP68(under 10 m of water during 1 week) / IP69K in mated condition and in combination with sealed backshell.
Fluid resistance	- Gas and oil - Mineral oil - Acid bath - Basic bath
Materials	- Shell: Zinc alloy - Backshells and cable glands: Brass - Coupling ring: Aluminum alloy - Coupling spring: Spring stainless steel - Insert: Glass-filled thermoplastic

UTOW Series Product Guide
Plug with male contact


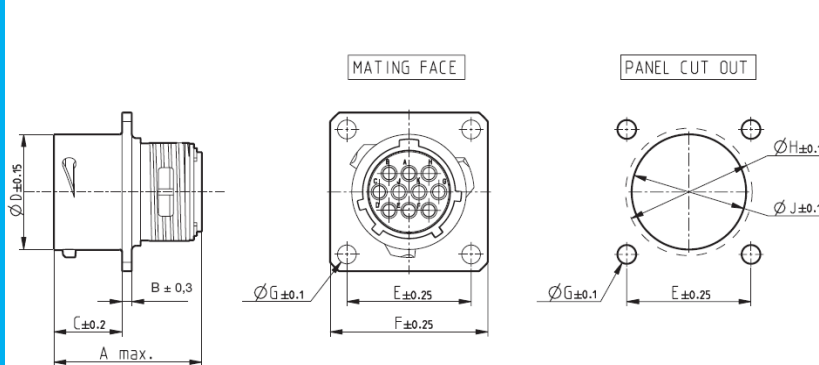
PN	SIZE	A ± 0.2	B MAX	ΦC ± 0.15	ΦD ± 0.15	E ± 0.25
INTOW6106PH	10	21.6	31.8	10.2	12.3	19.1
INTOW61210PH	12	24.8		13.4	15.1	
INTOW61419PH	14	28.0		16.7	18.3	
INTOW61626PH	16	31.2		19.7	21.5	
INTOW61832PH	18	34.3		21.7	24.0	
INTOW62041PH	20	37.5		24.9	27.2	
INTOW62255PH	22	40.7		28.1	30.4	
INTOW62461PH	24	43.9		31.2	33.5	

Plug with female contact


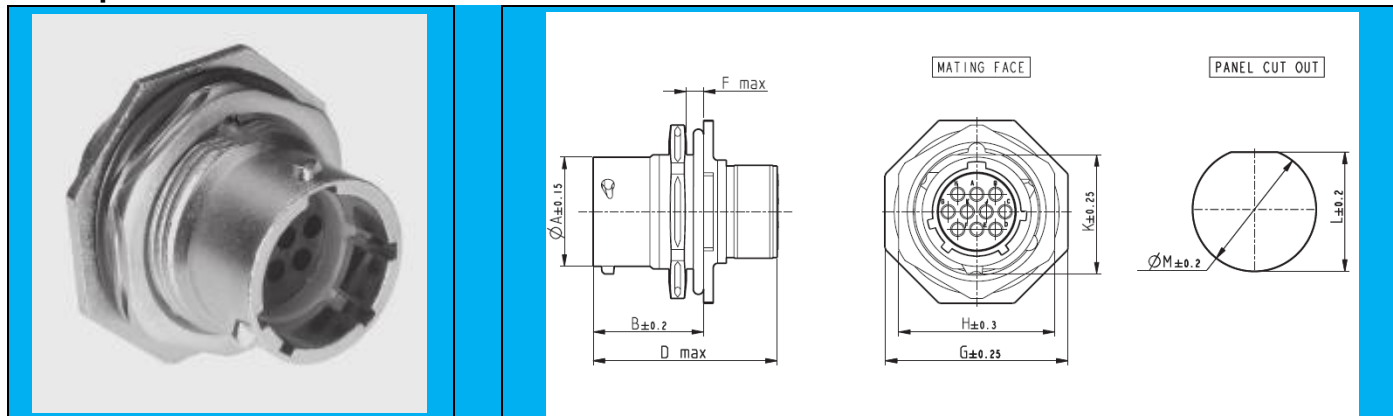
PN	SIZE	A ± 0.2	B MAX	ΦC ± 0.15	ΦD ± 0.15	E ± 0.25
INTOW6106SH	10	21.6	24.2	10.2	12.3	19.1
INTOW61210SH	12	24.8		13.4	15.1	
INTOW61419SH	14	28.0		16.7	18.3	
INTOW61626SH	16	31.2		19.7	21.5	
INTOW61832SH	18	34.3		21.7	24.0	
INTOW62041SH	20	37.5	24.9	24.9	27.2	
INTOW62255SH	22	40.7		28.1	30.4	
INTOW62461SH	24	43.9	26.2	31.2	33.5	

Receptacle with male contact


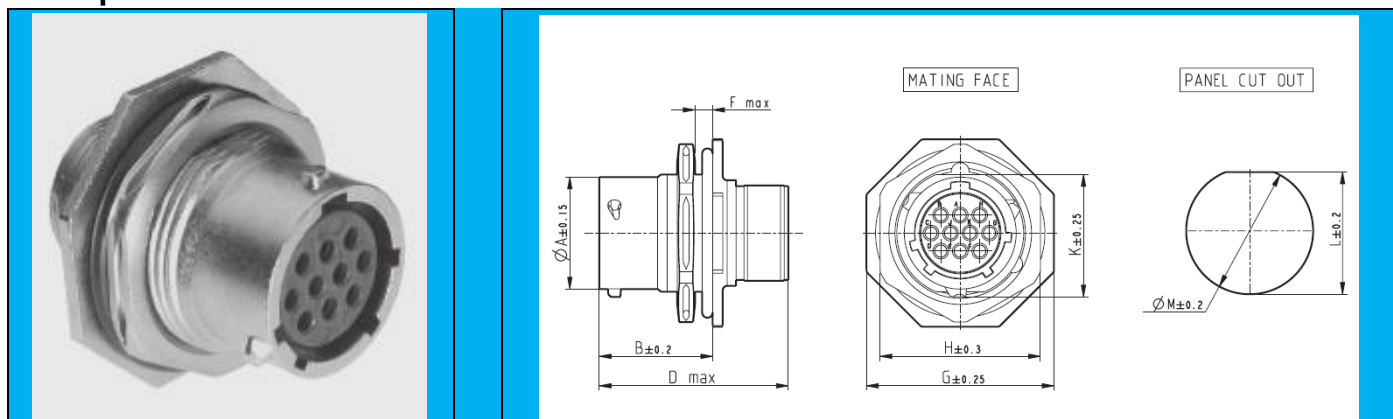
PN		Size	A MAX	B ±0.3	C ±0.2	ΦD ±0.15	E ±0.25	F ±0.25	ΦG ±0.1	ΦH ±0.1	ΦJ ±0.1
IP67	IP68										
INTOW0106PH	INTOW0106PH6	10	31.7	1.6	11.3	15.0	18.3	23.8	3.2	17.3	15.1
INTOW01210PH	INTOW01210PH6	12				19.0	20.6	26.2		21.8	18.2
INTOW01419PH	INTOW01419PH6	14				22.2	23.0	8.6		25.0	21.4
INTOW01626PH	INTOW01626PH6	16				25.3	24.6	31.0		28.1	24.6
INTOW01832PH	INTOW01832PH6	18				28.5	26.9	33.3		31.3	27.8
INTOW02041PH	INTOW02041PH6	20	33.3	2.4	14.5	31.7	29.4	36.5	3.9	34.5	30.9
INTOW02255PH	INTOW02255PH6	22				34.9	31.8	39.7		37.7	34.1
INTOW02461PH	INTOW02461PH6	24				15.3	38.0	34.9		40.9	37.3

Receptacle with female contact


PN		SIZE	A MAX	B ±0.3	C ±0.2	ΦD ±0.15	E ±0.25	F ±0.25	ΦG ±0.1	ΦH ±0.1	ΦJ ±0.1
IP67	IP68										
INTOW0106SH	INTOW0106SH6	10	24.3	1.6	11.3	15.0	18.3	23.8	3.2	17.3	15.1
INTOW01210SH	INTOW01210SH6	12				19.0	20.6	26.2		21.8	18.2
INTOW01419SH	INTOW01419SH6	14				22.2	23.0	8.6		25.0	21.4
INTOW01626SH	INTOW01626SH6	16				25.3	24.6	31.0		28.1	24.6
INTOW01832SH	INTOW01832SH6	18				28.5	26.9	33.3		31.3	27.8
INTOW02041SH	INTOW02041SH6	20	25.9	2.4	14.5	31.7	29.4	36.5	3.9	34.5	30.9
INTOW02255SH	INTOW02255SH6	22				34.9	31.8	39.7		37.7	34.1
INTOW02461SH	INTOW02461SH6	24				15.3	38.0	34.9		40.9	37.3

Receptacle with male contact


PN		SIZE	ΦA ±0.15	B ±0.2	D MAX	F MAX	G ±0.25	H ±0.3	K ±0.25	L ±0.2	ΦM ±0.2
IP67	IP68										
INTOW7106PH	INTOW7106PH6	10	14.9	18.0	31.7	3.2	27.0	22.2	16.6	17.0	17.7
INTOW71210PH	INTOW71210PH6	12	19.0				31.8	27.0	20.8	21.2	22.5
INTOW71419PH	INTOW71419PH6	14	22.2				34.9	30.2	23.9	24.3	25.7
INTOW71626PH	INTOW71626PH6	16	25.3				38.1	33.3	27.1	27.5	28.7
INTOW71832PH	INTOW71832PH6	18	28.5				41.3	36.5	30.3	30.6	32.0
INTOW72041PH	INTOW72041PH6	20	31.7	22.7	33.3	6.4	46.1	39.7	33.4	33.8	35.2
INTOW72255PH	INTOW72255PH6	22	34.9				49.2	42.9	36.6	37.0	38.4
INTOW72461PH	INTOW72461PH6	24	38.0				52.4	46.0	39.8	40.1	41.5

Receptacle with female contact


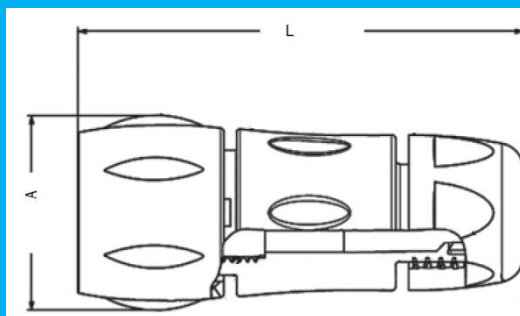
PN		SIZE	ΦA ±0.15	B ±0.2	D MAX	F MAX	G ±0.25	H ±0.3	K ±0.25	L ±0.2	ΦM ±0.2
IP67	IP68										
INTOW7106SH	INTOW7106SH6	10	14.9	18.0	24.3	3.2	27.0	22.2	16.6	17.0	17.7
INTOW71210SH	INTOW71210SH6	12	19.0				31.8	27.0	20.8	21.2	22.5
INTOW71419SH	INTOW71419SH6	14	22.2				34.9	30.2	23.9	24.3	25.7
INTOW71626SH	INTOW71626SH6	16	25.3				38.1	33.3	27.1	27.5	28.7
INTOW71832SH	INTOW71832SH6	18	28.5				41.3	36.5	30.3	30.6	32.0
INTOW72041SH	INTOW72041SH6	20	31.7	22.7	25.9	6.4	46.1	39.7	33.4	33.8	35.2
INTOW72255SH	INTOW72255SH6	22	34.9				49.2	42.9	36.6	37.0	38.4
INTOW72461SH	INTOW72461SH6	24	38.0				52.4	46.0	39.8	40.1	41.5

UTS series Waterproof Plastic Connectors,IP68 and IP69K

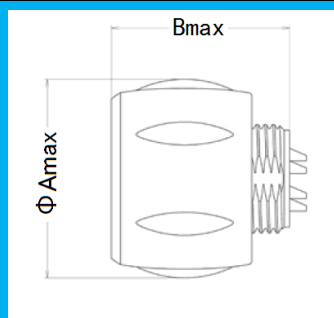
UTS Series Connector


UTOW Technical Characters:

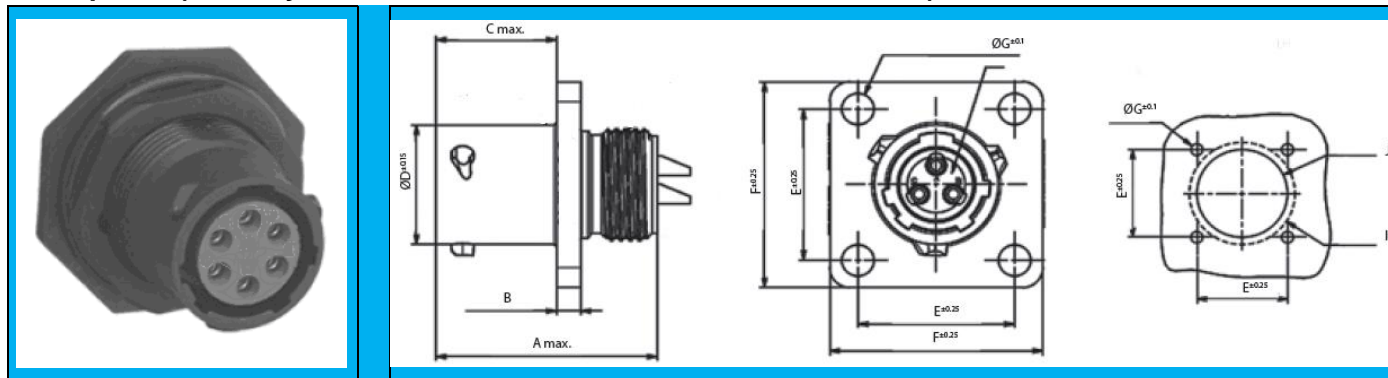
Operating Temperature	from -40°C to +105°C
Test voltage	1000VAC
Lifetime	250 times
Insulation Resistance	More than 5000 MΩ.
Salt spray	500 hours
Aging-resistance of UV	No mechanical deterioration or important variation in colour after 5 years of exposure in natural environment
Sealing	Dynamic IP67 / IP68(under 10 m of water during 1 week) / IP69K in mated condition and in combination with sealed backshell.
Fluid resistance	- Gas and oil - Mineral oil - Acid bath - Basic bath
Materials	- Shell: Thermoplastic - Backshells:Thermoplastic - Coupling ring: Thermoplastic - Insulator: -Insulator: Fill UL94-V0 Flame Retardant Thermoplastic Materials

Plug(with seal backshell accessory, Mount male contacts and female contacts)


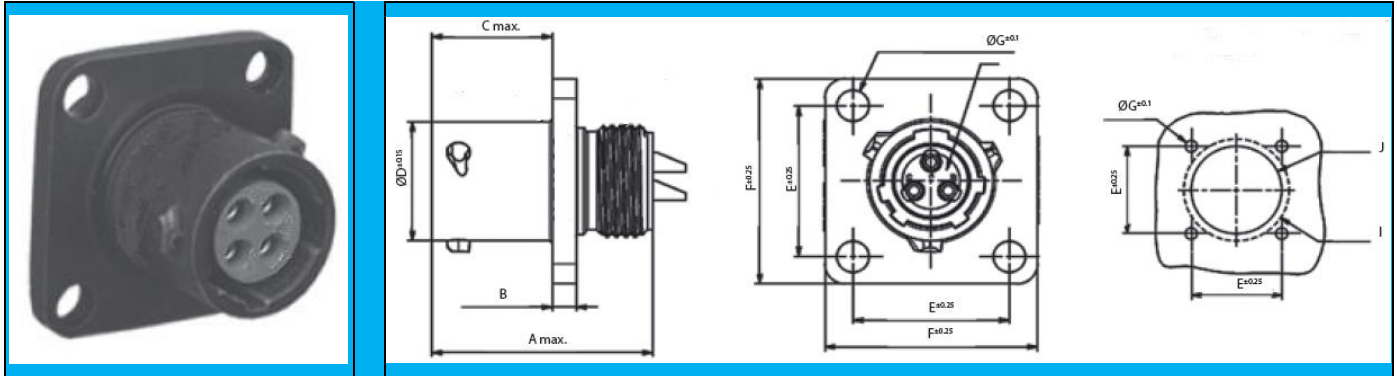
PN(Male contacts)	PN(Female Contacts)	No.of Contact *Diameter	Size	L Min	A	Cable Size
INTS6JC0802HP	INTS6JC0802HS	2x Φ 1.0	08	54	22.5	1.5 to 5.0 5.0 to 6.5(Standard)
INTS6JC0803HP	INTS6JC0803HS	3x Φ 1.0				
INTS6JC0804HP	INTS6JC0804HS	4x Φ 1.0				
INTS6JC1002YP	INTS6JC1002YS	2x Φ 1.6	10	63	26	1.5 to 5.0 5.0 to 8.0(Standard)
INTS6JC1003HP	INTS6JC1003HS	3x Φ 2.0				
INTS6JC1004YP	INTS6JC1004YS	4x Φ 1.6				
INTS6JC1006YP	INTS6JC1006YS	6x Φ 1.0				
INTS6JC1007HP	INTS6JC1007HS	7x Φ 1.0				
INTS6JC1203HP	INTS6JC1203HS	3x Φ 2.38	12	67	29	3.0 to 5.0 5.0 to 12.0(Standard)
INTS6JC1204YP	INTS6JC1204YS	4x Φ 2.0				
INTS6JC1208YP	INTS6JC1208YS	8x Φ 1.6				
INTS6JC1210YP	INTS6JC1210YS	10x Φ 1.0				
INTS6JC1214HP	INTS6JC1214HS	14x Φ 1.0				
INTS6JC1407YP	INTS6JC1407YS	7x Φ 1.6	14	71	34	5.0 to 9.0 9.0 to 14.0(Standard)
INTS6JC1412YP	INTS6JC1412YS	12x Φ 1.0				
INTS6JC14(3+9)HP	INTS6JC14(3+9)HS	3x Φ 2.38 9x Φ 1.0				
INTS6JC1419YP	INTS6JC1419YS	19x Φ 1.0				
INTS6JC14(24+2)HP	INTS6JC14(24+2)HS	2x Φ 2.38 24x Φ 0.7				
INTS6JC18(2+3)YP	INTS6JC18(2+3)YS	2x Φ 3.6 3x Φ 1.6	18	81	41.5	7.0 to 9.0 9.0 to 18.0(Standard)
INTS6JC1811YP	INTS6JC1811YS	11x Φ 1.6				
INTS6JC1830YP	INTS6JC1830YS	30x Φ 1				
INTS6JC1832YP	INTS6JC1832YS	32x Φ 1.0				

Plug(without sealed backshell accessory, Mount male contacts and female contacts)


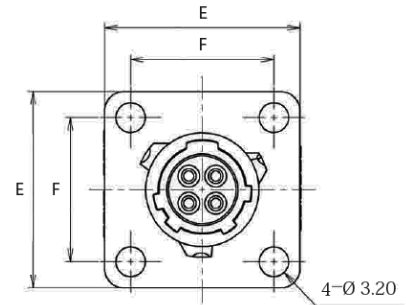
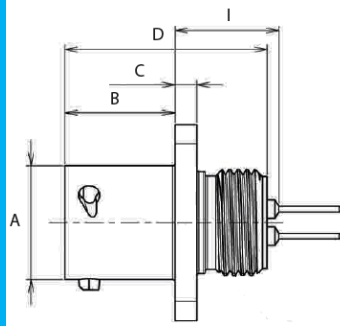
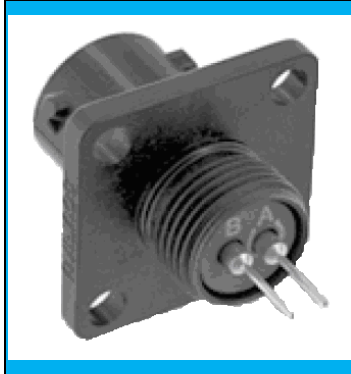
PN (Male contacts)	PN (Female Contacts)	No.of Contact *Diameter	SIZE	B	ΦA	Screw Size
INTS60802HP	INTS60802HS	2xΦ1.0	08	21.3	22.5	M10X1
INTS60803HP	INTS60803HS	3xΦ1.0				
INTS60804HP	INTS60804HS	4xΦ1.0				
INTS61002YP	INTS61002YS	2xΦ1.6	10	23.6	26	M14X1.25
INTS61003HP	INTS61003HS	3xΦ2.0				
INTS61004YP	INTS61004YS	4xΦ1.6				
INTS61006YP	INTS61006YS	6xΦ1.0				
INTS61007HP	INTS61007HS	7xΦ1.0				
INTS61203HP	INTS61203HS	3xΦ2.38	12	23.6	29	M17.5X1
INTS61204YP	INTS61204YS	4xΦ2.0				
INTS61208YP	INTS61208YS	8xΦ1.6				
INTS61210YP	INTS61210YS	10xΦ1.0				
INTS61214HP	INTS61214HS	14xΦ1.0				
INTS61407YP	INTS61407YS	7xΦ1.6	14	23.6	34	M21X1.25
INTS61412YP	INTS61412YS	12xΦ1.0				
INTS614(3+9)HP	INTS614(3+9)HS	3xΦ2.38 9xΦ1.0				
INTS61419YP	INTS61419YS	19xΦ1.0				
INTS614(24+2)HP	INTS614(24+2)HS	2xΦ2.38 24xΦ0.7				
INTS618(2+3)YP	INTS618(2+3)YS	2xΦ3.6 3xΦ1.6	18	23.6	41.5	M27X1.5
INTS61811YP	INTS61811YS	11xΦ1.6				
INTS61830YP	INTS61830YS	30xΦ1				
INTS61832YP	INTS61832YS	32xΦ1.0				

Receptacle (Fixed by screw, Mount male contact and female contact)


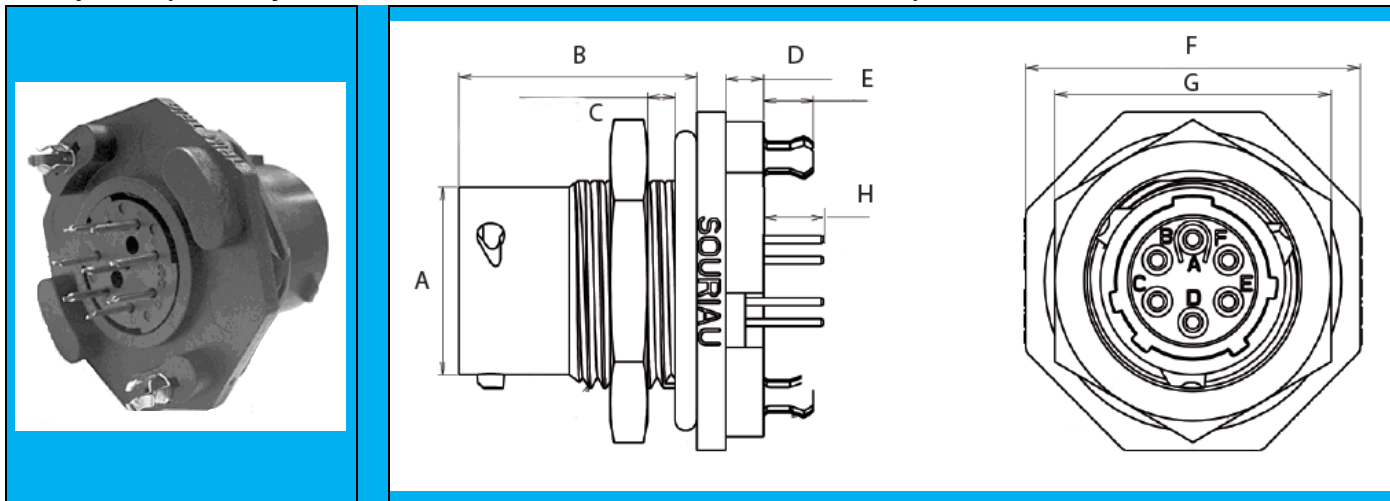
PN (Male contacts)	PN (Female Contacts)	No.of Contact *Diameter	Size	ΦA	B	C	D	E	F	ΦG
INTS70802HP	INTS70802HS	2xΦ1.0	08	12.0	19.3	3.2	24.0	19.3	13.75	14.6
INTS70803HP	INTS70803HS	3xΦ1.0								
INTS70804HP	INTS70804HS	4xΦ1.0								
INTS71002YP	INTS71002YS	2xΦ1.6	10	14.9	19.3	3.2	27.0	22.2	16.5	17.7
INTS71003HP	INTS71003HS	3xΦ2.0								
INTS71004YP	INTS71004YS	4xΦ1.6								
INTS71006YP	INTS71006YS	6xΦ1.0								
INTS71007HP	INTS71007HS	7xΦ1.0								
INTS71203HP	INTS71203HS	3xΦ2.38	12	19.0	19.3	3.2	31.8	27.0	21.2	22.5
INTS71204YP	INTS71204YS	4xΦ2.0								
INTS71208YP	INTS71208YS	8xΦ1.6								
INTS71210YP	INTS71210YS	10xΦ1.0								
INTS71214HP	INTS71214HS	14xΦ1.0								
INTS71407YP	INTS71407YS	7xΦ1.6	14	22.2	19.3	3.2	34.9	30.2	24.3	25.7
INTS71412YP	INTS71412YS	12xΦ1.0								
INTS714(3+9)HP	INTS714(3+9)HS	3xΦ2.38 9xΦ1.0								
INTS71419YP	INTS71419YS	19xΦ1.0								
INTS714(24+2)HP	INTS714(24+2)HS	2xΦ2.38 24xΦ0.7								
INTS718(2+3)YP	INTS718(2+3)YS	2xΦ3.6 3xΦ1.6	18	28.5	19.3	3.2	41.3	36.6	30.6	32.0
INTS71811YP	INTS71811YS	11xΦ1.6								
INTS71830YP	INTS71830YS	30xΦ1								
INTS71832YP	INTS71832YS	32xΦ1.0								

Receptacle(Flange Fixed,Mount male contact and female contact)


PN (Male contacts)	PN (Female Contacts)	No.of Contact *Diameter	Size	ΦA	B	C	ΦD	E	F	G	ΦI	ΦJ
INTS80802HP	INTS80802HS	2xΦ1.0	08	21.5	2.3	11.7	12.0	15.1	21.0	3.2	15.5	12.5
INTS80803HP	INTS80803HS	3xΦ1.0										
INTS80804HP	INTS80804HS	4xΦ1.0										
INTS81002YP	INTS81002YS	2xΦ1.6	10	21.5	2.3	11.7	15.0	18.3	23.8	3.2	17.3	15.1
INTS81003HP	INTS81003HS	3xΦ2.0										
INTS81004YP	INTS81004YS	4xΦ1.6										
INTS81006YP	INTS81006YS	6xΦ1.0										
INTS81007HP	INTS81007HS	7xΦ1.0										
INTS81203HP	INTS81203HS	3xΦ2.38	12	21.5	2.3	11.7	19.0	20.6	26.2	3.2	21.8	18.2
INTS81204YP	INTS81204YS	4xΦ2.0										
INTS81208YP	INTS81208YS	8xΦ1.6										
INTS81210YP	INTS81210YS	10xΦ1.0										
INTS81214HP	INTS81214HS	14xΦ1.0										
INTS81407YP	INTS81407YS	7xΦ1.6	14	21.5	2.3	11.7	22.0	23.0	28.6	3.2	25.0	21.5
INTS81412YP	INTS81412YS	12xΦ1.0										
INTS814(3+9)HP	INTS814(3+9)HS	3xΦ2.38 9xΦ1.0										
INTS81419YP	INTS81419YS	19xΦ1.0										
INTS814(24+2)HP	INTS814(24+2)HS	2xΦ2.38 24xΦ0.7										
INTS818(2+3)YP	INTS818(2+3)YS	2xΦ3.6 3xΦ1.6	18	21.5	2.3	11.7	28.5	27.0	33.0	3.2	31.8	27.8
INTS81811YP	INTS81811YS	11xΦ1.6										
INTS81830YP	INTS81830YS	30xΦ1										
INTS81832YP	INTS81832YS	32xΦ1.0										

Receptacle (Flange Fixed, Mount male contact and female contact)


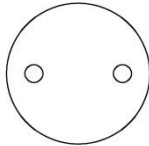
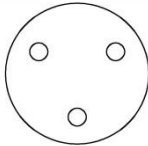
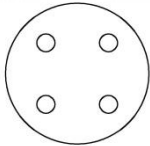
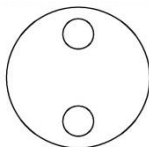
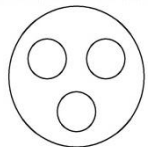
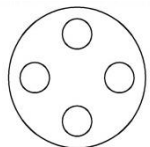
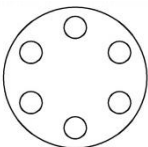
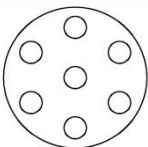
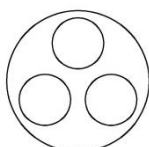
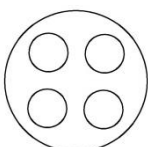
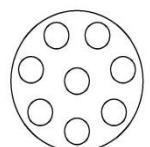
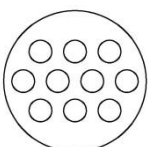
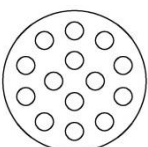
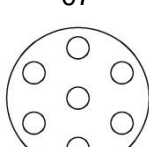
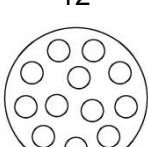
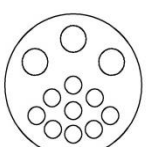
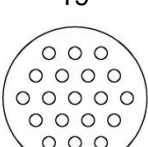
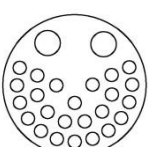
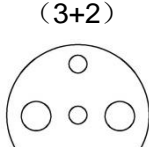
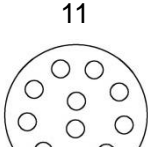
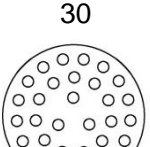
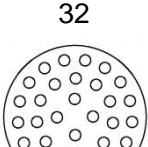
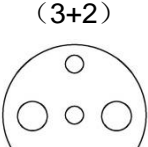
PN (Male contacts)	PN (Female Contacts)	No.of Contact *Diameter	Size	Φ A	B	C	D	E	F	I	
										Male	Female
										Contacts	Contacts
INTS80802BP	INTS80802BS	2xΦ1.0	08	11.9	11.7	2.3	21.5	21	15.1	9.76/ 11.86	9.55/ 11.71
INTS80803BP	INTS80803BS	3xΦ1.0									
INTS80804BP	INTS80804BS	4xΦ1.0									
INTS81002BP	INTS81002BS	2xΦ1.6	10	14.9	11.7	2.3	21.5	23.8	18.3	10.98/ 13.39	10.82/ 12.79
INTS81003BP	INTS81003BS	3xΦ2.0									
INTS81004BP	INTS81004BS	4xΦ1.6									
INTS81006BP	INTS81006BS	6xΦ1.0									
INTS81007BP	INTS81007BS	7xΦ1.0									
INTS81203BP	INTS81203BS	3xΦ2.38	12	18.95	11.7	2.3	21.5	26.2	20.6	10.98/ 13.39	10.82/ 12.79
INTS81204BP	INTS81204BS	4xΦ2.0									
INTS81208BP	INTS81208BS	8xΦ1.6									
INTS81210BP	INTS81210BS	10xΦ1.0									
INTS81214BP	INTS81214BS	14xΦ1.0								9.76/ 11.86	9.55/ 11.71
INTS81407BP	INTS81407BS	7xΦ1.6	14	22.15	11.7	2.3	21.5	28.6	23.0	10.98/ 13.39	10.82/ 12.79
INTS81412BP	INTS81412BS	12xΦ1.0									
INTS814(3+9)BP	INTS814(3+9)BS	3xΦ2.38 9xΦ1.0									
INTS81419BP	INTS81419BS	19xΦ1.0									
INTS814(24+2)BP	INTS814(24+2)BS	2xΦ2.38 24xΦ0.7									
INTS818(2+3)BP	INTS818(2+3)BS	2xΦ3.6 3xΦ1.6	18	Please contact with us for more details.							
INTS81811BP	INTS81811BS	11xΦ1.6									
INTS81830BP	INTS81830BS	30xΦ1									
INTS81832BP	INTS81832BS	32xΦ1.0									

Receptacle (Fixed by screw, Mount male contact and female contact)




PN (Male contacts)	PN (Female Contacts)	No.of Contact *Diameter	Size	ΦA	B	C	D	E	F	G	H	
											Male Contacts	Female Contacts
INTS70802BP	INTS70802BS	2xΦ1.0	08	12.0	19.3	3.2	3.4	4	24.0	19.3	3.8/ 6.0	3.75/ 5.8
INTS70803BP	INTS70803BS	3xΦ1.0										
INTS70804BP	INTS70804BS	4xΦ1.0										
INTS71002BP	INTS71002BS	2xΦ1.6	10	14.9	19.3	3.2	3.4	4	28.0	22.2	4.8/ 7.28	4.91/ 6.96
INTS71003BP	INTS71003BS	3xΦ2.0										
INTS71004BP	INTS71004BS	4xΦ1.6										
INTS71006BP	INTS71006BS	6xΦ1.0										
INTS71007BP	INTS71007BS	7xΦ1.0										
INTS71203BP	INTS71203BS	3xΦ2.38	12	19.0	19.3	3.2	3.4	4	31.8	27.0	4.8/ 7	5.2/7
INTS71204BP	INTS71204BS	4xΦ2.0										
INTS71208BP	INTS71208BS	8xΦ1.6										
INTS71210BP	INTS71210BS	10xΦ1.0										
INTS71214BP	INTS71214BS	14xΦ1.0									3.85/ 5.9	3.85/ 5.9
INTS71407BP	INTS71407BS	7xΦ1.6	14	22.2	19.3	3.2	3.4	4	34.9	30.2	4.8/7	5.3/7
INTS71412BP	INTS71412BS	12xΦ1.0										
INTS714(3+9)BP	INTS714(3+9)BS	3xΦ2.38 9xΦ1.0										
INTS71419BP	INTS71419BS	19xΦ1.0										
INTS714(24+2)BP	INTS714(24+2)BS	2xΦ2.38 24xΦ0.7										
INTS718(2+3)BP	INTS718(2+3)BS	2xΦ3.6 3xΦ1.6	18	Please contact with us for more details.								
INTS71811BP	INTS71811BS	11xΦ1.6										
INTS71830BP	INTS71830BS	30xΦ1										



INTS71832BP	INTS71832BS	32xΦ1.0		
-------------	-------------	---------	--	--



UTS Series Connector Pin Array

Size	UTS Series				
8	02  2XΦ1 (#20)	03  3XΦ1 (#20)	04  4XΦ1 (#20)		
10	02  2XΦ1.6 (#16)	03  3XΦ2.0	04  4XΦ1.6 (#16)	06  6XΦ1 (#20)	07  7XΦ1 (#20)
12	03  3XΦ2.38 (#12)	04  4XΦ2.0	08  8XΦ1.6 (#16)	10  10XΦ1 (#20)	14  14XΦ1 (#20)
14	07  7XΦ1.6 (#16)	12  12XΦ1 (#20)	(3+9)  3XΦ2.38 (#12) 9XΦ1 (#20)	19  19XΦ1 (#20)	(24+2)  2XΦ2.38 (#12) 24XΦ0.7 (#20)
18	(3+2)  3XΦ1.6 (#16) 2XΦ3.6	11  11XΦ1.6 (#16)	30  30XΦ1 (#20)	32  32XΦ1 (#20)	(3+2)  3XΦ1.6 (#16) 2XΦ3.6

UTS Connectors Accessory

Dust Cap for Receptacle			
			
SIZE	PN	SIZE	PN
8	INTS8DCG	8	INTS8DCGR
10	INTS10DCG	10	INTS10DCGR
12	INTS12DCG	12	INTS12DCGR
14	INTS14DCG	14	INTS14DCGR
18	INTS18DCG	18	INTS18DCGR

Dust Cap for Flange Receptacle		Dust Cape for Plug	
			
SIZE	PN	SIZE	PN
8	INTS8DCGE	8	INTS8DCGE
10	INTS10DCGE	10	INTS10DCGE
12	INTS12DCGE	12	INTS12DCGE
14	INTS14DCGE	14	INTS14DCGE
18	INTS18DCGE	18	INTS18DCGE

Color Bands			Plastic over cap		
					
SIZE	PN		SIZE	PN	
	Receptalce	Plug		Receptacle	Plug
10	INTS710CCR	INTS610CCR	8	INTS8500-5585A	INTS8500-5594
12	INTS712CCR	INTS612CCR	10	INTS8500-5586A	INTS8500-5595
14	INTS714CCR	INTS618CCR	12	INTS8500-5587A	INTS8500-5596
G:Green Y:Yellow R:Red			14	INTS8500-5588A	INTS8500-5597
			18	INTS8500-5590A	INTS8500-5599