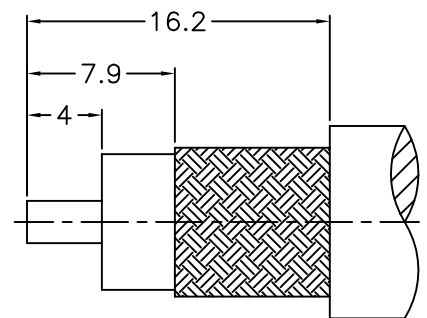


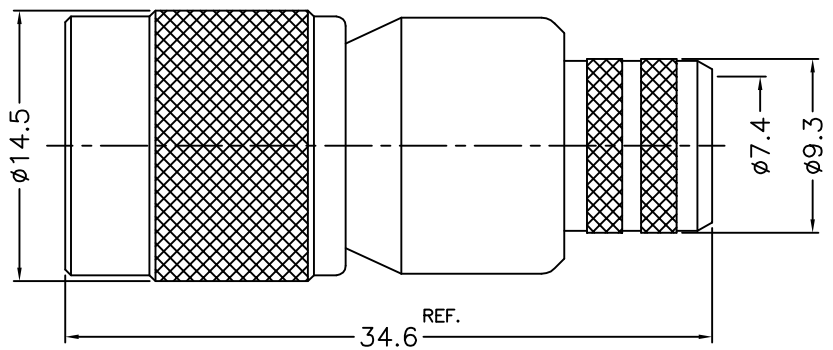
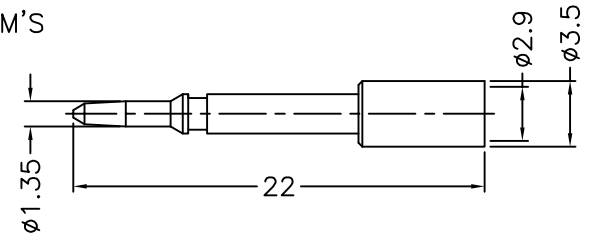
1 2 3 4 5 6 7 8

REVISIONS		
ISS	ZONE	DESCRIPTION\APPROVED\DATE

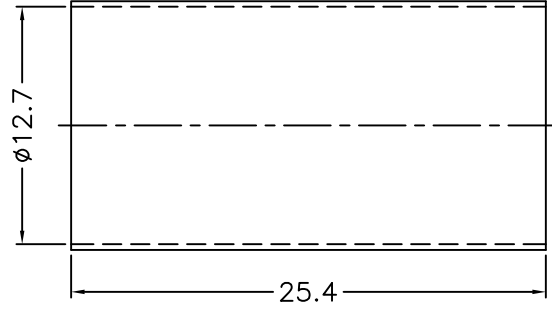
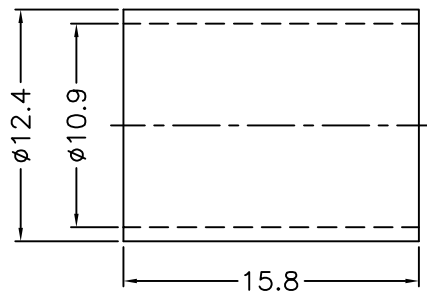


- 1. CRIMPED FERRULE
HEX. CRIMP SIZE .429"
- 2. CRIMPED CONTACT PIN
HEX. CRIMP SIZE .118"

RECOMMENDED
CABLE STRIPPING DIM'S




NOTES: FINISH (PLATING THICKNESS IN MICRO-INCHES)
 1. BRASS
 2. NICKEL PL. 100 MIN. THICK OVER COPPER PL. 50 MIN. THICK
 3. GOLD PL. 3 MIN. THICK OVER NICKEL PL. 50 MIN. THICK OVER COPPER PL. 50 MIN. THICK
 4. TEFLON



11	HEAT SHRINK TUBING	WITH GLUE	BLACK	1	GHT-127-254L
10	FERRULE	NOTE 1	NOTE 2	1	FR-109-124-158
9	CONTACT PIN	NOTE 1	NOTE 3	1	900-1121A6-9-2.9
8	WASHER	NOTE 1	NOTE 2	1	WS-90-128-08
7	RING	DELTRIN	NATURAL	1	71628-1000-6
6	RETAINER RING	NOTE 1	NOTE 2	1	900-1000-5
5	GASKET	RUBBER	RED	1	GS-80-105-15
4	BARREL	NOTE 1	NOTE 2	1	5824-1000-3-17
3	INSULATOR	NOTE 4	NATURAL	1	900-1121A6-3-50T
2	BODY	NOTE 1	NOTE 2	1	900-1121A6-2
1	SHELL	NOTE 1	NOTE 2	1	71628-1000-1
NO.	DESCRIPTION	MATERIAL	FINISH	Q'TY	DRAWING NO.

DIMENSIONS ARE IN MILLIMETERS
 UNLESS OTHERWISE SPECIFIED TOLERANCES
 0.5-6 = ±0.2
 6-30 = ±0.4
 30-120 = ±0.6
 120-315 = ±1
 315-1000 = ±1.6
 1000-2000 = ±2.4

PART NO.		TNC-1121A1-17-50
APPROVED	DATE	04-01-'14
CHECKED	DATE	04-01-'14
DRAWN	DATE	04-01-'14



ELIMEC
electro-mechanical engineering

TITLE: TNC CRIMP PLUG
(FOR BELDEN 9913, LMR400)

DRAWING NO. 71628-1121A10-17-50

FILE NO. R:\D\G\DWG\71628\1121A10\17\50

1 2 3 4 5 6 7 8

F

F

E

E

D

D

C

C

B

B

A

A