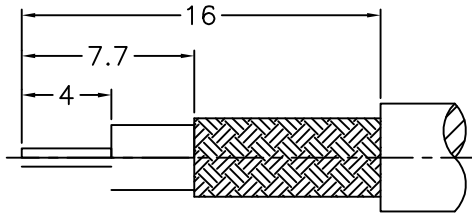
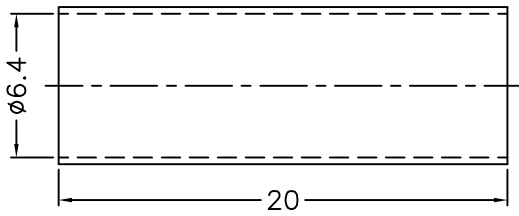
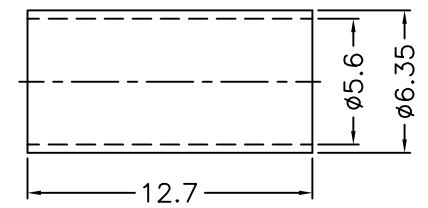
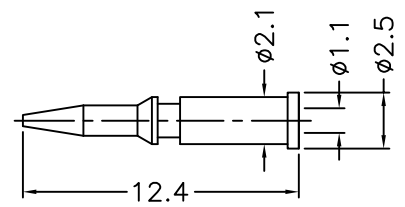
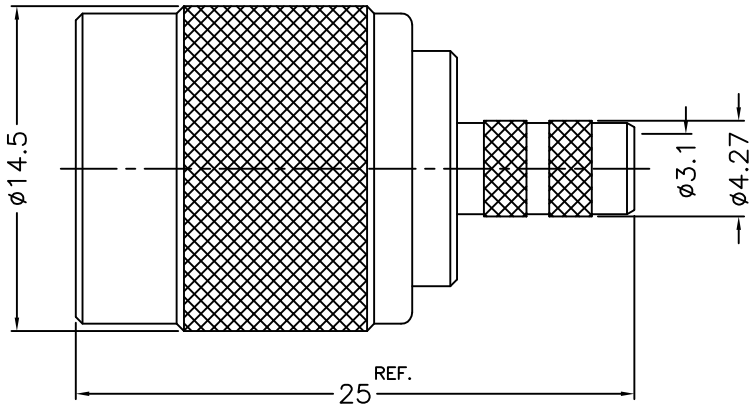


1 2 3 4 5 6 7 8

| REVISIONS | | |
|-----------|------|------------------------------|
| ISS | ZONE | DESCRIPTION\PER REQUEST\DATE |
| | | |



RECOMMENDED
CABLE STRIPPING DIM'S



NOTES: FINISH (PLATING THICKNESS IN MICRO-INCHES)
 1. BRASS
 2. NICKEL PL. 100 MIN. THICK OVER COPPER PL. 50 MIN. THICK
 3. GOLD PL. 3 MIN. THICK OVER NICKEL PL. 50 MIN. THICK OVER COPPER PL. 50 MIN. THICK

- 1. CRIMPED FERRULE
HEX CRIMP SIZE .213"
- 2. CRIMPED CONTACT PIN
HEX CRIMP SIZE .068"

| | | | | | |
|-----|--------------------|-----------|---------|------|------------------|
| 10 | HEAT SHRINK TUBING | WITH GLUE | BLACK | 1 | GHT-64-200L |
| 9 | FERRULE | NOTE 1 | NOTE 2 | 1 | FR-56-635-127 |
| 8 | CONTACT PIN | NOTE 1 | NOTE 3 | 1 | 900-1121A1-8-1.1 |
| 7 | WASHER | NOTE 1 | NOTE 2 | 1 | WS-90-128-08 |
| 6 | RING | DELTRIN | NATURAL | 1 | 71628-1000-6 |
| 5 | RETAINER RING | NOTE 1 | NOTE 2 | 1 | 900-1000-5 |
| 4 | GASKET | RUBBER | RED | 1 | GS-80-105-15 |
| 3 | INSULATOR | DELTRIN | NATURAL | 1 | 900-1000-3-50D |
| 2 | BODY | NOTE 1 | NOTE 2 | 1 | 900-1000-2-07 |
| 1 | SHELL | NOTE 1 | NOTE 2 | 1 | 71628-1000-1 |
| NO. | DESCRIPTION | MATERIAL | FINISH | Q'TY | DRAWING NO. |

| DIMENSIONS ARE IN MILLIMETERS | | | | PART NO. | | | |
|--|-----|-------|---|-------------------|------|-----------|--|
| UNLESS OTHERWISE SPECIFIED TOLERANCES 0.5-6 = ±0.2 6-30 = ±0.4 30-120 = ±0.6 120-315 = ±1 315-1000 = ±1.6 1000-2000 = ±2.4 | | | | TNC-1121A1-07-50D | | | |
| | | | | APPROVED | DATE | 04-01-'14 | |
| | | | | CHECKED | DATE | 04-01-'14 | |
| | | | | DRAWN | DATE | 04-01-'14 | |
| SCALE | 3/1 | ISSUE | A | | | | |

| | | | |
|--|--|-------------|---|
| | | TITLE | TNC CRIMP PLUG (FOR RG-55, 142A, 400, 223) |
| | | DRAWING NO. | 71628-1121A11-07-50D |
| | | FILE NO. | R:\D\G\DWG\71628\1121A11\07\50D |
| | | | |

1 2 3 4 5 6 7 8

F

F

E

E

D

D

C

C

B

B

A

A