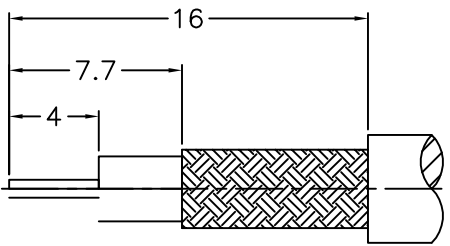
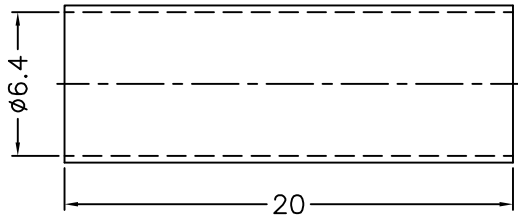
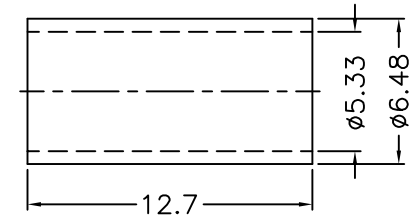
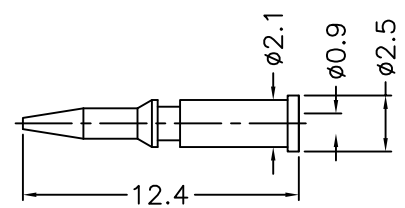
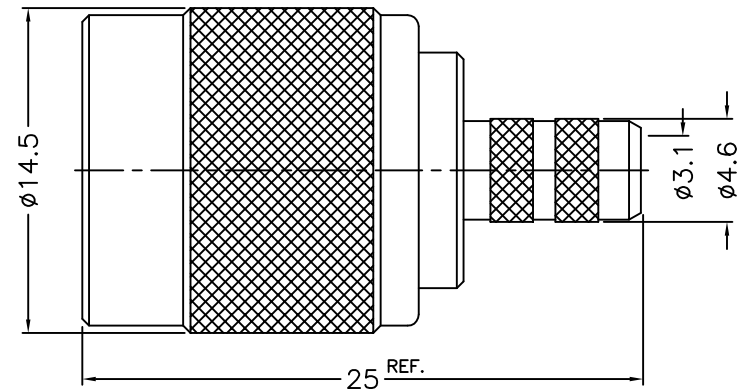


1 2 3 4 5 6 7 8

REVISIONS		
ISS	ZONE	DESCRIPTION\PER REQUEST\DATE



RECOMMENDED
CABLE STRIPPING DIM'S




NOTES: FINISH (PLATING THICKNESS IN MICRO-INCHES)
 1. BRASS
 2. DELRIN
 3. NICKEL PL. 100 MIN. THICK OVER COPPER PL. 50 MIN. THICK
 4. GOLD PL. 3 MIN. THICK OVER NICKEL PL. 50 MIN. THICK OVER COPPER PL. 50 MIN. THICK

- 1. CRIMPED FERRULE
HEX CRIMP SIZE .213"
- 2. CRIMPED CONTACT PIN
HEX CRIMP SIZE .068"

10	HEAT SHRINK TUBING	WITH GLUE	BLACK	1	GHT-64-200L
9	FERRULE	COPPER	NOTE 3	1	FR-533-648-127C
8	CONTACT PIN	NOTE 1	NOTE 4	1	900-1121A1-8-0.9
7	WASHER	NOTE 1	NOTE 3	1	WS-90-128-08
6	RING	NOTE 2	NATURAL	1	71628-1000-6
5	RETAINER RING	NOTE 1	NOTE 3	1	900-1000-5
4	GASKET	RUBBER	RED	1	GS-80-105-15
3	INSULATOR	NOTE 2	NATURAL	1	900-1000-3-50D
2	BODY	NOTE 1	NOTE 3	1	900-1000-2-06
1	SHELL	NOTE 1	NOTE 3	1	71628-1000-1
NO.	DESCRIPTION	MATERIAL	FINISH	Q'TY	DRAWING NO.

DIMENSIONS ARE IN MILLIMETERS			
UNLESS OTHERWISE SPECIFIED TOLERANCES			
0.5-6	=	±0.2	
6-30	=	±0.4	
30-120	=	±0.6	
120-315	=	±1	
315-1000	=	±1.6	
1000-2000	=	±2.4	
SCALE	3/1	ISSUE	A

PART NO.		
TNC-1121A1-06-50D		
APPROVED	DATE	
	04-01-'14	
CHECKED	DATE	TITLE
	04-01-'14	TNC CRIMP PLUG
DRAWN	DATE	(FOR RG-58, 58A, 141, LMR195)
	04-01-'14	DRAWING NO.
		71628-1121B3-06-50D
		FILE NO. R:\D\G\DWG\71628\1121B3\06\50D

1 2 3 4 5 6 7 8

F
E
D
C
B
A

F
E
D
C
B
A