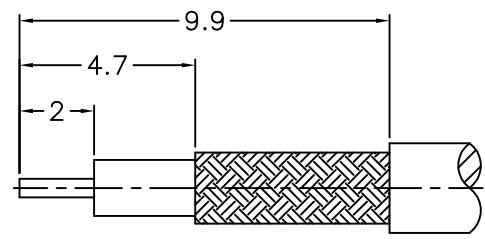


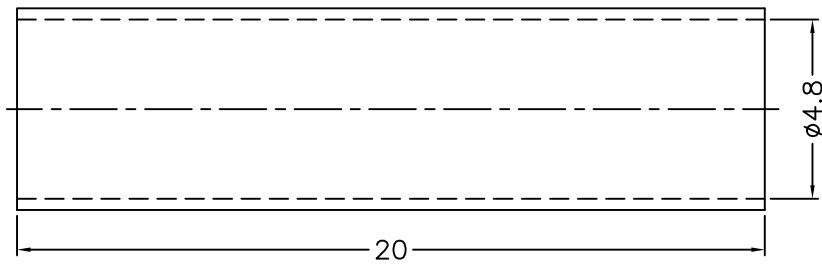
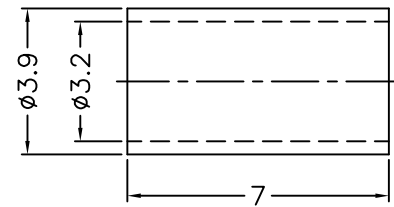
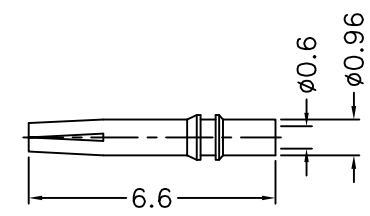
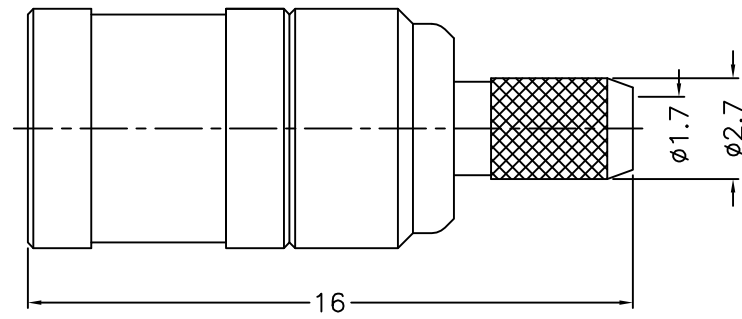
1 2 3 4 5 6 7 8

REVISIONS		
ISS	ZONE	DESCRIPTION\PER REQUEST\DATE



1. CRIMPED FERRULE
HEX CRIMP SIZE .128"
2. CONTACT PIN TO SOLDER


RECOMMENDED
CABLE STRIPPING DIM'S



NOTES: FINISH (PLATING THICKNESS IN MICRO-INCHES)
1. BRASS
2. BERYLLIUM COPPER
3. GOLD PL. 3 MIN. THICK OVER NICKEL PL. 50 MIN. THICK OVER COPPER PL. 50 MIN. THICK
4. TEFLON

9	HEAT SHRINK TUBING	WITH GLUE	BLACK	1	GHT-48-200L
8	FERRULE	COPPER	NOTE 3	1	FR-32-39-7C
7	CONTACT PIN	NOTE 2	NOTE 3	1	500-6121A1-7-0.6
6	SHELL	NOTE 1	NOTE 3	1	500-6000-1
5	RETAINER RING	NOTE 2	NATURAL	1	500-6000-6
4	BARREL	NOTE 1	NOTE 3	1	500-6121A1-4-02
3	INSULATOR	NOTE 4	NATURAL	1	500-6121A1-3T
2	INSULATOR	NOTE 4	NATURAL	1	500-6121A1-2T
1	BODY	NOTE 1	NOTE 3	1	500-6121A1-1

DIMENSIONS ARE IN MILLIMETERS
UNLESS OTHERWISE SPECIFIED TOLERANCES
0.5-6 = ±0.2
6-30 = ±0.4
30-120 = ±0.6
120-315 = ±1
315-1000 = ±1.6
1000-2000 = ±2.4

PART NO.		
SMB-6121A1-02-50		
APPROVED	DATE	
	04-01-'14	
CHECKED	DATE	TITLE
	04-01-'14	
DRAWN	DATE	DRAWING NO.
	04-01-'14	500-6121A10-02-50
FILE NO.		R:\D\G\DWG\500\6121A10\02\50

1 2 3 4 5 6 7 8

F
E
D
C
B
A

F
E
D
C
B
A