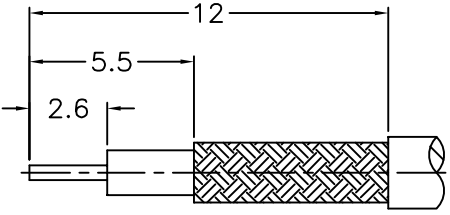
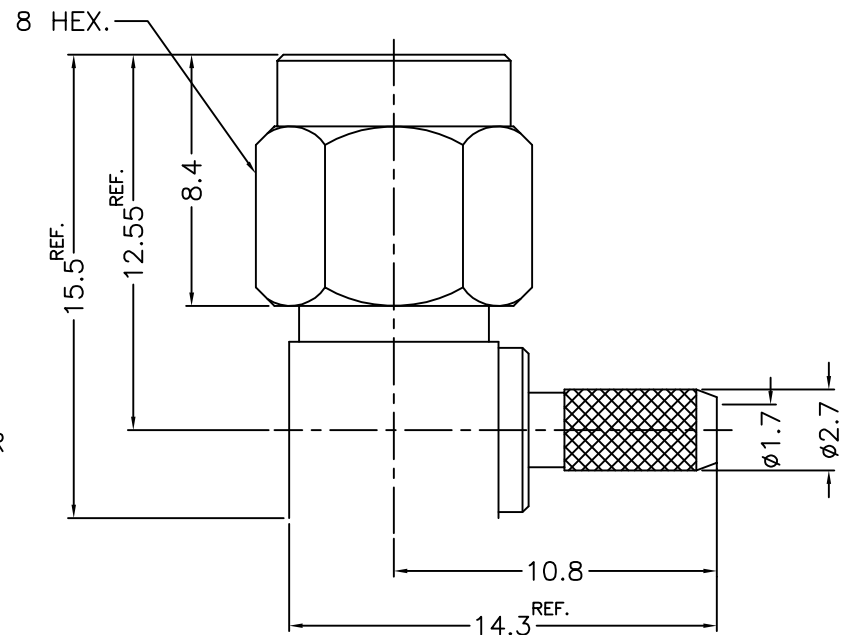
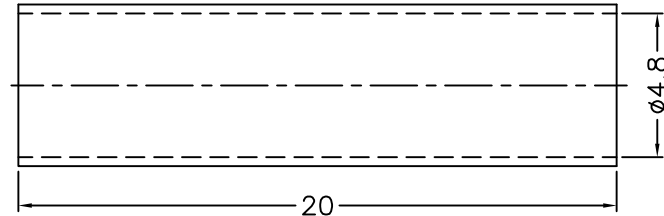
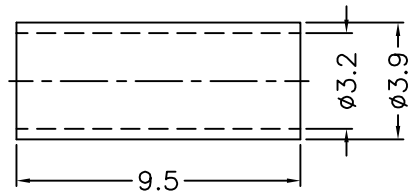


REVISIONS		
ISS	ZONE	DESCRIPTION\PER REQUEST\DATE

F
E
D
C
B
A

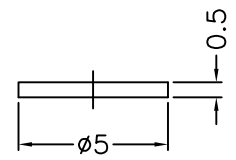


RECOMMENDED CABLE STRIPPING DIM'S




- 1. CRIMPED FERRULE HEX. CRIMP SIZE .128"
- 2. CONTACT PIN TO SOLDER

NOTES: FINISH (PLATING THICKNESS IN MICRO-INCHES)
 1. BRASS
 2. THIN GOLD OVER NICKEL PL. 50 MIN. THICK OVER COPPER PL. 50 MIN. THICK
 3. GOLD PL. 3 MIN. THICK OVER NICKEL PL. 50 MIN. THICK OVER COPPER PL. 50 MIN. THICK
 4. TEFLON



9	HEAT SHRINK TUBING	WITH GLUE	BLACK	1	GHT-48-200L
8	FERRULE	NOTE 1	NOTE 2	1	FR-32-39-95
7	COVER	NOTE 1	NOTE 2	1	CV-50-05
6	GASKET	SILICONE	RED	1	GS-43-60-06
5	RETAINER RING	SUS 303	NATURAL	1	1436-1000-4
4	CONTACT PIN	NOTE 1	NOTE 3	1	1436-1112A1-4-0.8
3	INSULATOR	NOTE 4	NATURAL	1	1436-1112A1-3-50T
2	HOUSING WITH BARREL	NOTE 1	NOTE 2	1	1436-1112A1-2-02
1	SHELL	NOTE 1	NOTE 2	1	1436-1000-1

DIMENSIONS ARE IN MILLIMETERS			PART NO.	
UNLESS OTHERWISE SPECIFIED TOLERANCES			SMA-1112A1-02-50	
0.5-6 = ±0.2			APPROVED	DATE 04-01-'14
6-30 = ±0.4			CHECKED	DATE 04-01-'14
30-120 = ±0.6			DRAWN	DATE 04-01-'14
120-315 = ±1				
315-1000 = ±1.6				
1000-2000 = ±2.4				



ELIMEC
electro-mechanical engineering

TITLE	SMA R/A CRIMP PLUG (FOR RG-174/U, 188A/U, 316/U)
DRAWING NO.	1436-1112A16-02-50
FILE NO.	R:\D\G\DWG\1436\1112A16\02\50

NO.	DESCRIPTION	MATERIAL	FINISH	Q'TY	DRAWING NO.	SCALE	4/1	ISSUE	A