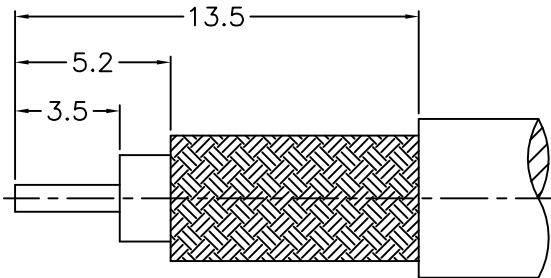
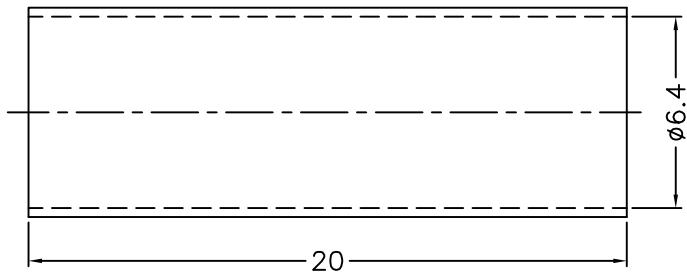
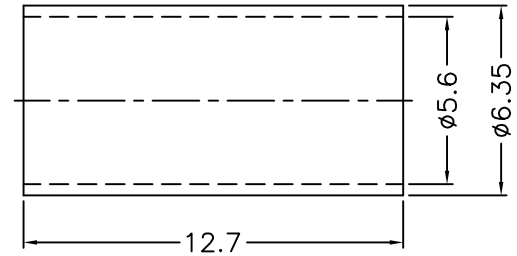
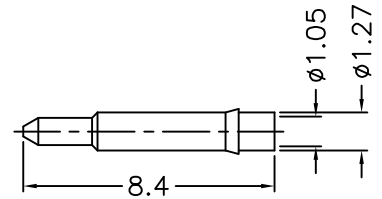
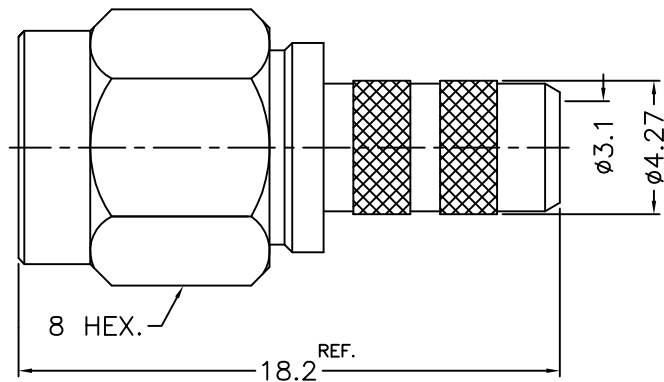


1 2 3 4 5 6 7 8

REVISIONS		
ISS	ZONE	DESCRIPTION\PER REQUEST\DATE



RECOMMENDED
CABLE STRIPPING DIM'S



1. CRIMPED FERRULE
HEX. CRIMP SIZE .213"
2. CONTACT PIN TO SOLDER

NOTES: FINISH (PLATING THICKNESS IN MICRO-INCHES)
 1. BRASS
 2. THIN GOLD THICK OVER NICKEL PL. 50 MIN. THICK OVER COPPER PL. 50 MIN. THICK
 3. GOLD PL. 3 MIN. THICK OVER NICKEL PL. 50 MIN. THICK OVER COPPER PL. 50 MIN. THICK
 4. TEFLON

8	HEAT SHRINK TUBING	WITH GLUE	BLACK	1	GHT-64-200L
7	FERRULE	NOTE 1	NOTE 2	1	FR-56-635-127
6	CONTACT PIN	NOTE 1	NOTE 3	1	1436-1111A2-6 -1.05
5	GASKET	SILICONE	RED	1	GS-43-60-06
4	RETAINER RING	SUS 303	NATURAL	1	1436-1000-4
3	INSULATOR	NOTE 4	NATURAL	1	1436-1111A2-3 -50T
2	BODY	NOTE 1	NOTE 2	1	1436-1111A2-2 -07
1	SHELL	NOTE 1	NOTE 2	1	1436-1000-1

DIMENSIONS ARE IN MILLIMETERS				PART NO.	
UNLESS OTHERWISE SPECIFIED TOLERANCES				SMA-1111A1-07-50	
0.5-6 = ±0.2		6-30 = ±0.4		APPROVED	DATE
30-120 = ±0.6		120-315 = ±1			04-01-'14
315-1000 = ±1.6		1000-2000 = ±2.4		CHECKED	DATE
					04-01-'14
				DRAWN	DATE
					04-01-'14

	TITLE	SMA CRIMP PLUG (FOR RG-55/U,142A/U,223/U,400/U)
	DRAWING NO.	1436-1111B8-07-50
	FILE NO.	R:\D\G\DWG\1436\1111B8\07\50

NO.	DESCRIPTION	MATERIAL	FINISH	Q'TY	DRAWING NO.
-----	-------------	----------	--------	------	-------------

SCALE	4/1	ISSUE	A
-------	-----	-------	---

1 2 3 4 5 6 7 8

F
E
D
C
B
A

F
E
D
C
B
A