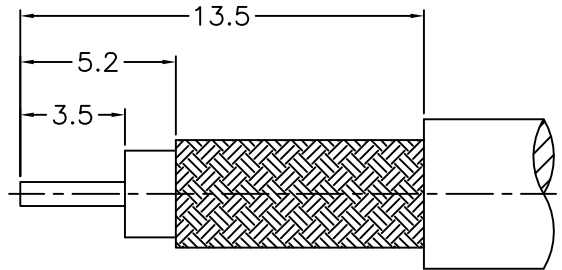
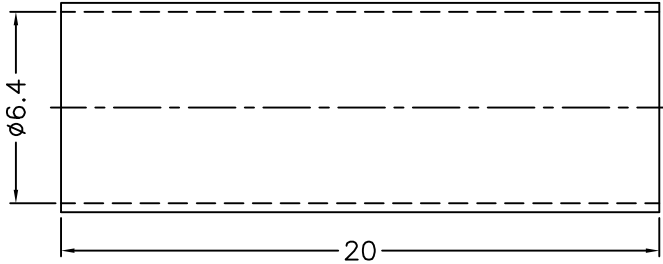
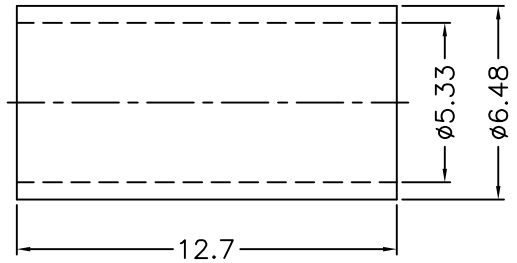
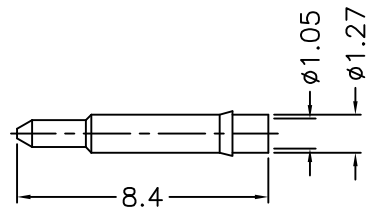
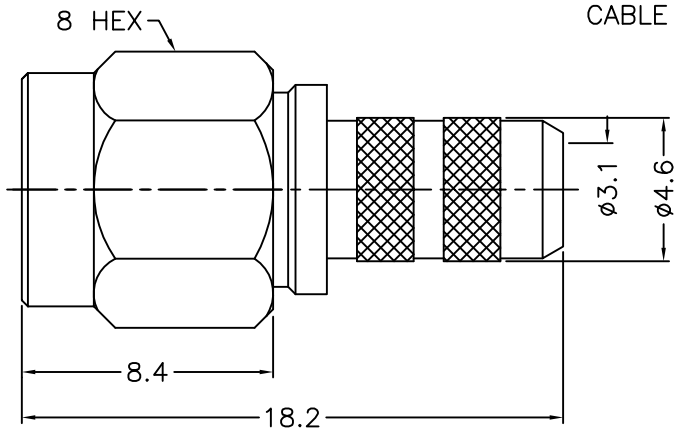


1 2 3 4 5 6 7 8

| REVISIONS | | |
|-----------|------|------------------------------|
| ISS | ZONE | DESCRIPTION\PER REQUEST\DATE |
| | | |



RECOMMENDED
CABLE STRIPPING DIM'S




1. CRIMPED FERRULE
HEX CRIMP SIZE .213"

- NOTES: FINISH (PLATING THICKNESS IN MICRO-INCHES)
- BRASS
 - THIN GOLD OVER NICKEL PL. 50 MIN. THICK OVER COPPER PL. 50 MIN. THICK
 - GOLD PL. 3 MIN. THICK OVER NICKEL PL. 50 MIN. THICK OVER COPPER PL. 50 MIN. THICK
 - TEFLON

| | | | | | |
|---|--------------------|-----------|---------|---|--------------------|
| 8 | HEAT SHRINK TUBING | WITH GLUE | BLACK | 1 | GHT-64-200L |
| 7 | FERRULE | COPPER | NOTE 2 | 1 | FR-533-648-127C |
| 6 | CONTACT PIN | NOTE 1 | NOTE 3 | 1 | 1436-1111A2-6-1.05 |
| 5 | GASKET | SILICONE | RED | 1 | GS-43-60-06 |
| 4 | RETAINER RING | SUS 303 | NATURAL | 1 | 1436-1000-4 |
| 3 | INSULATOR | NOTE 4 | NATURAL | 1 | 1436-1111A2-3-50T |
| 2 | BODY | NOTE 1 | NOTE 2 | 1 | 1436-1111A2-2-06 |
| 1 | SHELL | NOTE 1 | NOTE 2 | 1 | 1436-1000-1 |

DIMENSIONS ARE IN MILLIMETERS
UNLESS OTHERWISE SPECIFIED TOLERANCES

0.5-6 = ±0.2
6-30 = ±0.4
30-120 = ±0.6
120-315 = ±1
315-1000 = ±1.6
1000-2000 = ±2.4

| | | |
|------------------|-----------|---|
| PART NO. | |  |
| SMA-1111A1-06-50 | | |
| APPROVED | DATE | |
| | 04-01-'14 | |
| CHECKED | DATE | TITLE |
| | 04-01-'14 | |
| DRAWN | DATE | DRAWING NO. |
| | 04-01-'14 | 1436-1111B8-06-50 |
| FILE NO. | | R:\D\G\DWG\1436\1111B8\06\50 |

| NO. | DESCRIPTION | MATERIAL | FINISH | Q'TY | DRAWING NO. |
|-----|-------------|----------|--------|------|-------------|
|-----|-------------|----------|--------|------|-------------|

| SCALE | 4/1 | ISSUE | A |
|-------|-----|-------|---|
|-------|-----|-------|---|

1 2 3 4 5 6 7 8

F

F

E

E

D

D

C

C

B

B

A

A