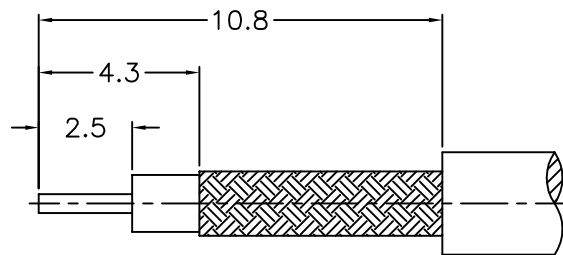


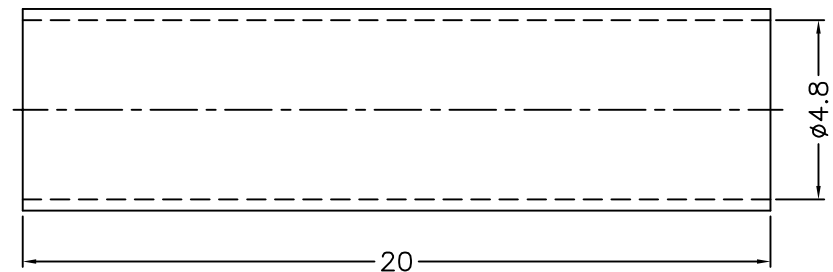
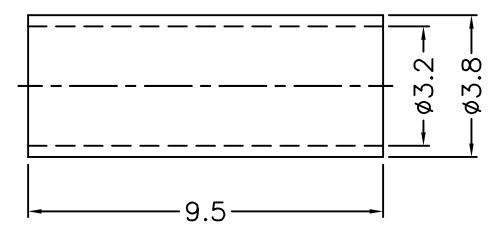
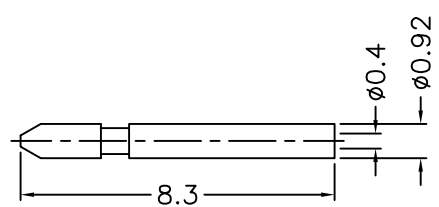
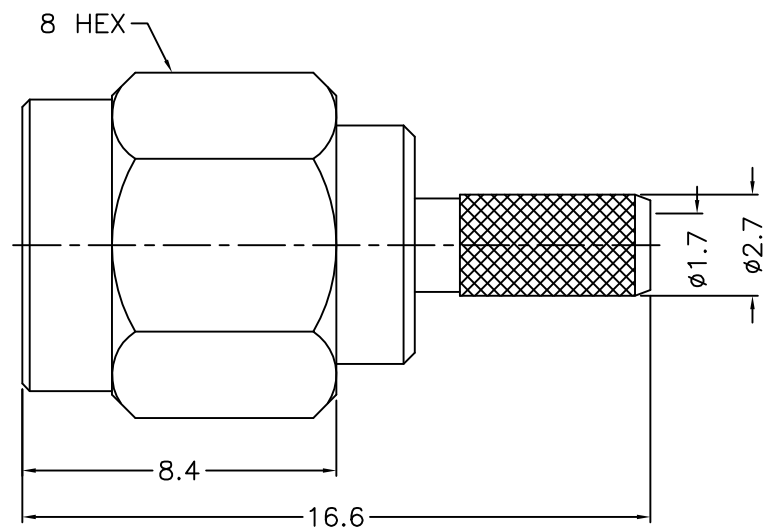
1 2 3 4 5 6 7 8

REVISIONS		
ISS	ZONE	DESCRIPTION\PER REQUEST\DATE



1. CRIMPED FERRULE  
HEX CRIMP SIZE .128"

RECOMMENDED  
CABLE STRIPPING DIM'S




- NOTES: FINISH (PLATING THICKNESS IN MICRO-INCHES)
- BRASS
  - THIN GOLD OVER NICKEL PL. 50 MIN. THICK OVER COPPER PL. 50 MIN. THICK
  - GOLD PL. 3 MIN. THICK OVER NICKEL PL. 50 MIN. THICK OVER COPPER PL. 50 MIN. THICK
  - TEFLON

8	HEAT SHRINK TUBING	WITH GLUE	BLACK	1	GHT-48-200L
7	FERRULE	NOTE 1	NOTE 2	1	FR-32-38-95
6	CONTACT PIN	NOTE 1	NOTE 3	1	1436-1111A1-6-0.4
5	GASKET	SILICONE	RED	1	GS-43-60-06
4	RETAINER RING	SUS303	NATURAL	1	1436-1000-4
3	INSULATOR	NOTE 4	NATURAL	1	1436-1111A1-3-50T
2	BODY	NOTE 1	NOTE 2	1	1436-1111A1-2-02
1	SHELL	NOTE 1	NOTE 2	1	1436-1000-1

DIMENSIONS ARE IN MILLIMETERS  
UNLESS OTHERWISE SPECIFIED TOLERANCES

0.5-6 = ±0.2  
6-30 = ±0.4  
30-120 = ±0.6  
120-315 = ±1  
315-1000 = ±1.6  
1000-2000 = ±2.4

PART NO.		
SMA-1111A1-03-50		
APPROVED	DATE	
	04-01-'14	
CHECKED	DATE	TITLE
	04-01-'14	
DRAWN	DATE	DRAWING NO.
	04-01-'14	1436-1111A20-03-50
FILE NO. R:\D\G\DWG\1436\1111A20\03\50		

NO.	DESCRIPTION	MATERIAL	FINISH	Q'TY	DRAWING NO.	SCALE	5/1	ISSUE	A
-----	-------------	----------	--------	------	-------------	-------	-----	-------	---

1 2 3 4 5 6 7 8

F

F

E

E

D

D

C

C

B

B

A

A