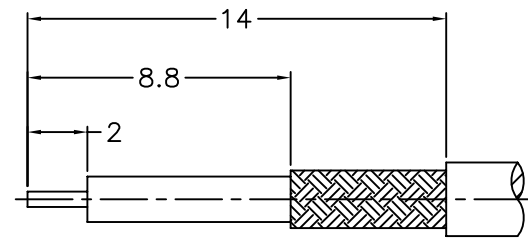
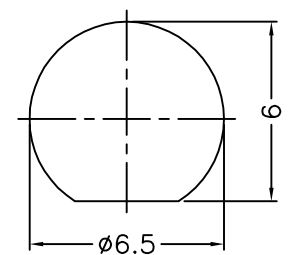


1 2 3 4 5 6 7 8

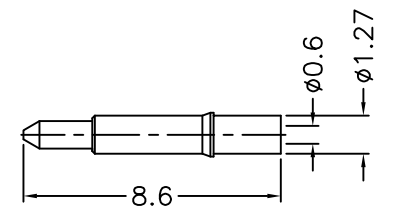
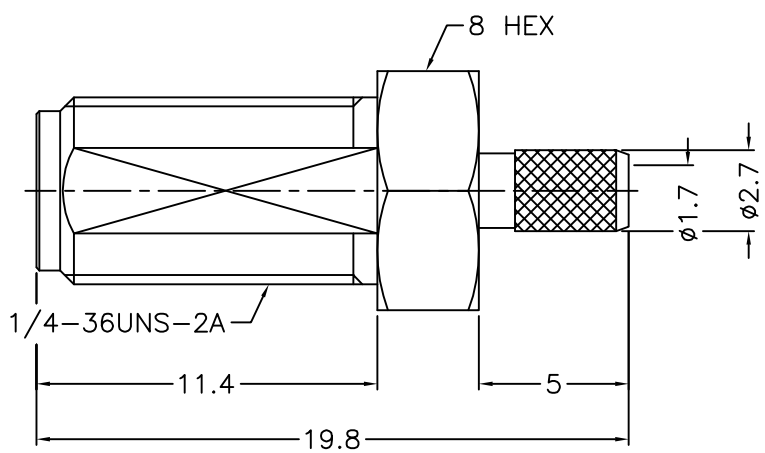
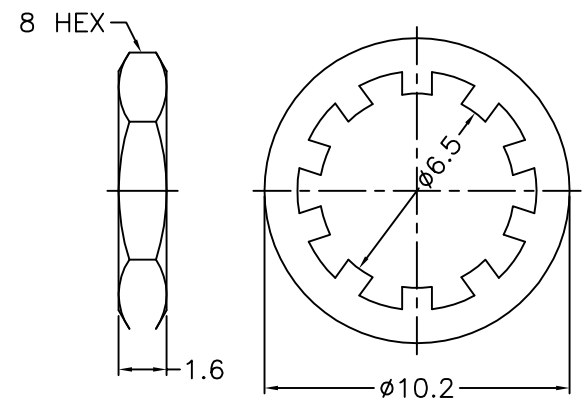
REVISIONS		
ISS	ZONE	DESCRIPTION\PER REQUEST\DATE



RECOMMENDED CABLE STRIPPING DIM'S

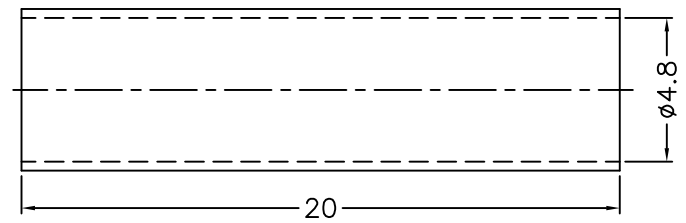
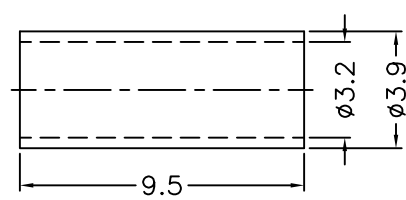


RECOMMENDED MOUNTING HOLE



1. CRIMPED FERRULE
HEX CRIMP SIZE .128"
2. CONTACT PIN TO SOLDER

NOTES: FINISH (PLATING THICKNESS IN MICRO-INCHES)
 1. BRASS
 2. THIN GOLD OVER NICKEL PL. 50 MIN. THICK OVER COPPER PL. 50 MIN. THICK
 3. GOLD PL. 3 MIN. THICK OVER NICKEL PL. 50 MIN. THICK OVER COPPER PL. 50 MIN. THICK
 4. TEFLON



8	HEAT SHRINK TUBING	WITH GLUE	BLACK	1	GHT-48-200L
7	FERRULE	NOTE 1	NOTE 2	1	FR-32-39-95
6	CONTACT PIN	NOTE 1	NOTE 3	1	1436RP-6411A3-6-0.6
5	HEX NUT	NOTE 1	NOTE 2	1	HN-8-1436-16
4	LOCK WASHER	NOTE 1	NOTE 2	1	LW-65-102-05
3	RING	NOTE 1	NOTE 2	1	1436-6411A2-3
2	INSULATOR	NOTE 4	NATURAL	1	1436-6411A2-2-50T
1	BODY	NOTE 1	NOTE 2	1	1436-6411A2-1-02

DIMENSIONS ARE IN MILLIMETERS				PART NO.			
UNLESS OTHERWISE SPECIFIED TOLERANCES 0.5-6 = ±0.2 6-30 = ±0.4 30-120 = ±0.6 120-315 = ±1 315-1000 = ±1.6 1000-2000 = ±2.4				SMARP-6411A1-02-50			
				APPROVED	DATE	04-01-'14	
				CHECKED	DATE	04-01-'14	
				DRAWN	DATE	04-01-'14	

TITLE
SMA REVERSE POLARITY BULKHEAD CRIMP JACK (FOR RG-174, 188A, 316, LMR100)

DRAWING NO.
1436RP-6411A10-02-50

FILE NO. R:\D\G\DWG\1436\RP\6411A10\02\50

NO.	DESCRIPTION	MATERIAL	FINISH	Q'TY	DRAWING NO.	SCALE	4/1	ISSUE	A
-----	-------------	----------	--------	------	-------------	-------	-----	-------	---

1 2 3 4 5 6 7 8

F
E
D
C
B
A

F
E
D
C
B
A