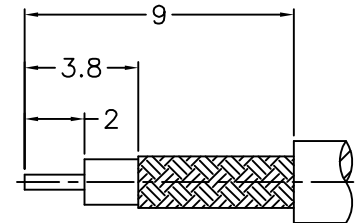
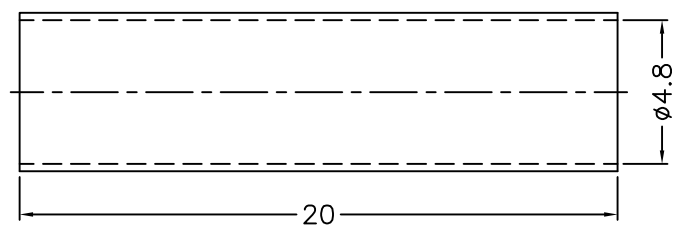
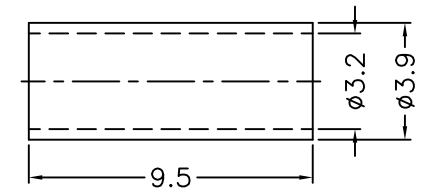
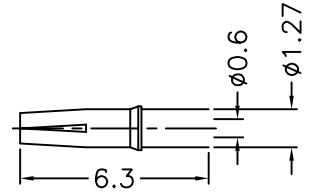
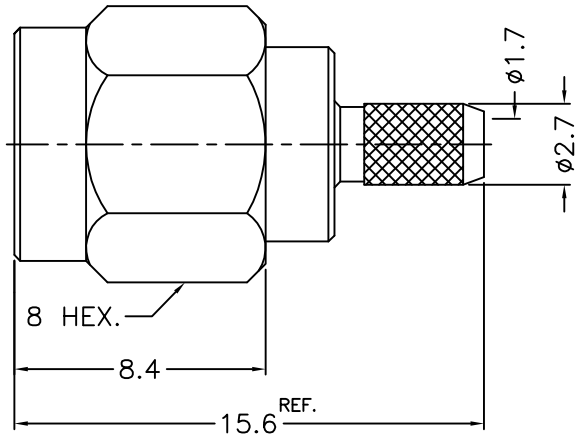


1 2 3 4 5 6 7 8

REVISIONS		
ISS	ZONE	DESCRIPTION\PER REQUEST\DATE



RECOMMENDED  
CABLE STRIPPING DIM'S




1. CRIMPED FERRULE  
HEX. CRIMP SIZE .128"
2. CONTACT PIN TO SOLDER

- NOTES: FINISH (PLATING THICKNESS IN MICRO-INCHES)
1. BRASS
  2. THIN GOLD OVER NICKEL PL. 50 MIN. THICK OVER COPPER PL. 50 MIN. THICK
  3. BERYLLIUM COPPER
  4. GOLD PL. 3 MIN. THICK OVER NICKEL PL. 50 MIN. THICK OVER COPPER PL. 50 MIN. THICK
  5. TEFLON

8	HEAT SHRINK TUBING	WITH GLUE	BLACK	1	GHT-48-200L
7	FERRULE	NOTE 1	NOTE 2	1	FR-32-39-95
6	CONTACT PIN	NOTE 3	NOTE 4	1	1436-6411A2-6-0.6
5	GASKET	SILICONE	RED	1	GS-43-60-06
4	RETAINER RING	SUS 303	NATURAL	1	1436-1000-4
3	INSULATOR	NOTE 5	NATURAL	1	1436RP-1111A3-3-50T
2	BODY	NOTE 1	NOTE 2	1	1436RP-1111A3-2-02
1	SHELL	NOTE 1	NOTE 2	1	1436-1000-1

DIMENSIONS ARE IN MILLIMETERS				PART NO.	
UNLESS OTHERWISE SPECIFIED TOLERANCES				SMARP-1111A1-02-50	
0.5-6	=	±0.2	APPROVED		
6-30	=	±0.4	DATE 04-01-'14		
30-120	=	±0.6	CHECKED		
120-315	=	±1	DATE 04-01-'14		
315-1000	=	±1.6	DRAWN		
1000-2000	=	±2.4	DATE 04-01-'14		



**ELIMEC**  
electro-mechanical engineering

TITLE SMA REVERSE POLARITY CRIMP PLUG  
(FOR RG-174, 188A, 316, LMR100)

DRAWING NO. 1436RP-1111A12-02-50

FILE NO. R:\D\G\DWG\1436\RP\1111A12\02\50

NO.	DESCRIPTION	MATERIAL	FINISH	Q'TY	DRAWING NO.
-----	-------------	----------	--------	------	-------------

SCALE	4/1	ISSUE	A
-------	-----	-------	---

1 2 3 4 5 6 7 8