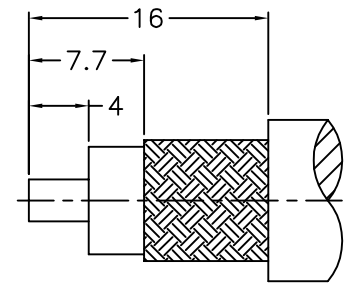
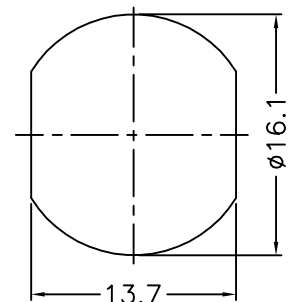


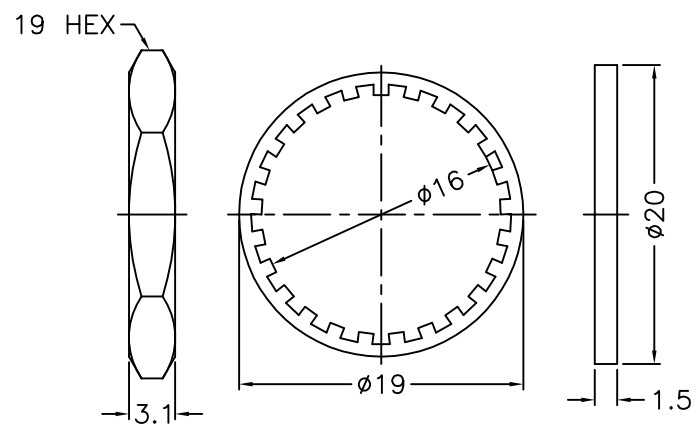
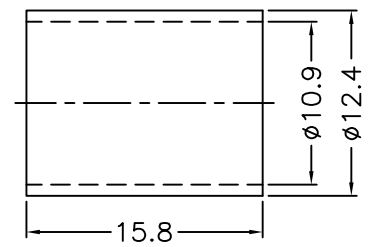
1. CRIMPED FERRULE
HEX CRIMP SIZE .429"
2. CRIMPED CONTACT PIN
HEX CRIMP SIZE .118"
3. MAX. PANEL THICKNESS=6.5mm



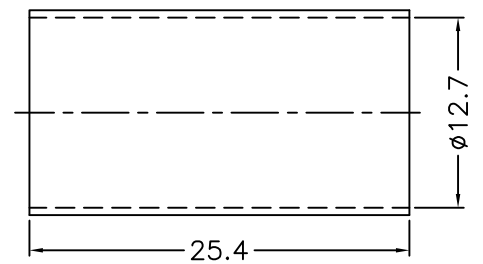
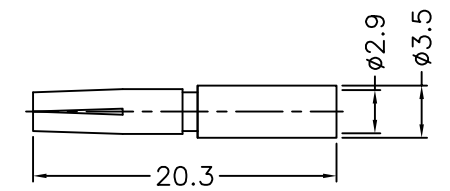
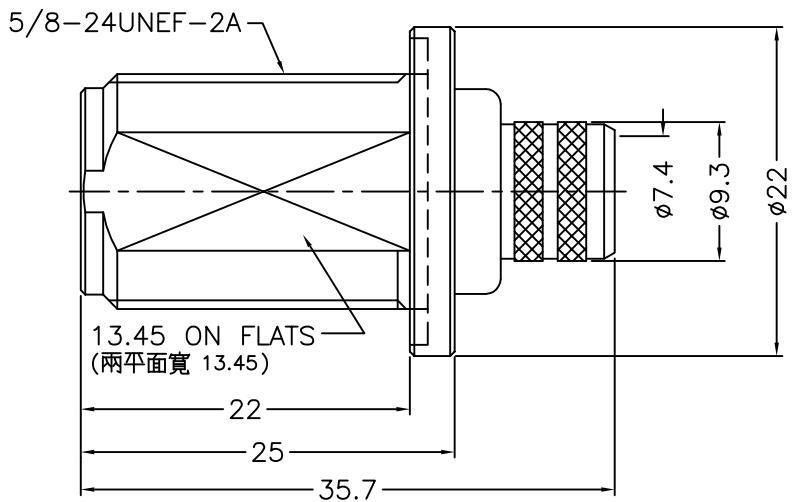
RECOMMENDED
CABLE STRIPPING DIM'S



RECOMMENDED
MOUNTING HOLE




- NOTES: FINISH (PLATING THICKNESS IN MICRO-INCHES)
1. BRASS
 2. NICKEL PL. 100 MIN. THICK OVER COPPER PL. 50 MIN. THICK
 3. PHOSPHOR BRONZE
 4. GOLD PL. 3 MIN. THICK OVER NICKEL PL. 50 MIN. THICK OVER COPPER PL. 50 MIN. THICK
 5. TEFLON



9	HEAT SHRINK TUBING	WITH GLUE	BLACK	1	GHT-127-254L
8	FERRULE	NOTE 1	NOTE 2	1	FR-109-124-158
7	CONTACT PIN	NOTE 3	NOTE 4	1	5824-6421A6-7-2.9
6	HEX NUT	NOTE 1	NOTE 2	1	HN-19-5824-31
5	LOCK WASHER	NOTE 1	NOTE 2	1	LW-16-19-06
4	GASKET	SILICONE	RED	1	GS-160-200-15
3	BARREL	NOTE 1	NOTE 2	1	5824-1000-3-17
2	INSULATOR	NOTE 5	NATURAL	1	5824-6421A6-2-50T
1	BODY	NOTE 1	NOTE 2	1	5824-6421A6-1
NO.	DESCRIPTION	MATERIAL	FINISH	Q'TY	DRAWING NO.

DIMENSIONS ARE IN MILLIMETERS				PART NO.	
UNLESS OTHERWISE SPECIFIED TOLERANCES				N-6421A1-17-50	
0.5-6 = ±0.2				APPROVED	DATE
6-30 = ±0.4					03-31-'14
30-120 = ±0.6				CHECKED	DATE
120-315 = ±1					03-31-'14
315-1000 = ±1.6				DRAWN	DATE
1000-2000 = ±2.4					03-31-'14
SCALE	2/1	ISSUE	A		

 ELIMEC electro-mechanical engineering	
TITLE N BULKHEAD CRIMP JACK (FOR LMR-400, BELDEN 9913, 9914)	
DRAWING NO. 5824-6421A7-17-50	
FILE NO. R:\D\G\WG\5824\6421A7\17\50	