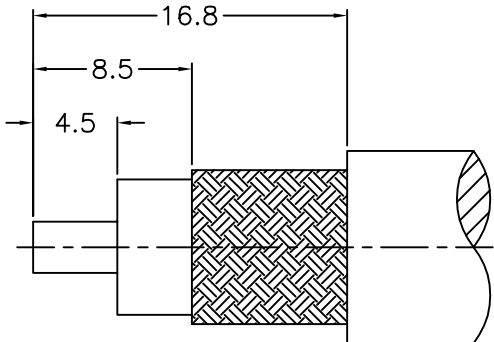
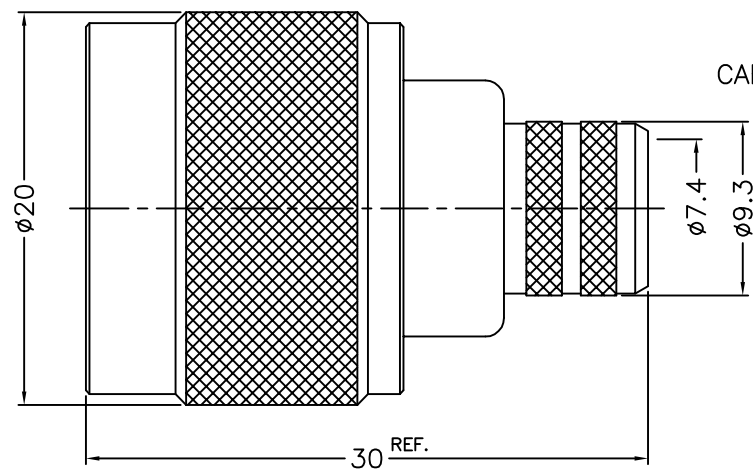
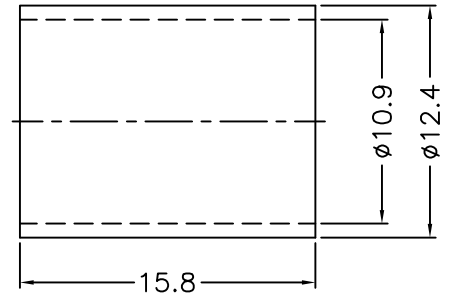
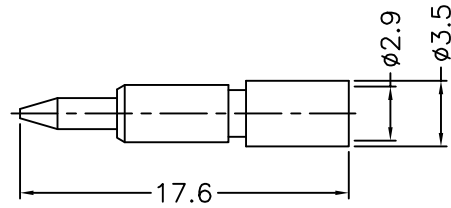


1 2 3 4 5 6 7 8

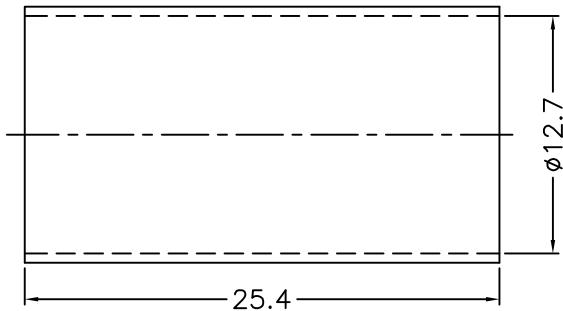
REVISIONS		
ISS	ZONE	DESCRIPTION\PER REQUEST\DATE



RECOMMENDED  
CABLE STRIPPING DIM'S




- NOTES: FINISH (PLATING THICKNESS IN MICRO-INCHES)
1. BRASS
  2. NICKEL PL. 100 MIN. THICK OVER COPPER PL. 50 MIN. THICK
  3. GOLD PL. 3 MIN. THICK OVER NICKEL PL. 50 MIN. THICK OVER COPPER PL. 50 MIN. THICK
  4. TEFLON
  5. PHOSPHOR BRONZE



1. CRIMPED FERRULE  
HEX. CRIMP SIZE .429"
2. CRIMPED CONTACT PIN  
HEX. CRIMP SIZE .118"

9	HEAT SHRINK TUBING	WITH GLUE	BLACK	1	GHT-127-254L
8	FERRULE	NOTE 1	NOTE 2	1	FR-109-124-158
7	CONTACT PIN	NOTE 1	NOTE 3	1	5824-1121A2-7 -2.9
6	RETAINER RING	NOTE 5	NATURAL	1	5824-1000-7
5	GASKET	SILICONE	RED	1	GS-80-156-15
4	INSULATOR	NOTE 4	NATURAL	1	5824-1121A2-4 -50T
3	BARREL	NOTE 1	NOTE 2	1	5824-1000-3-17
2	BODY	NOTE 1	NOTE 2	1	5824-1121A2-2
1	SHELL	NOTE 1	NOTE 2	1	5824-1000-1

DIMENSIONS ARE IN MILLIMETERS  
UNLESS OTHERWISE SPECIFIED  
TOLERANCES  
0.5-6 = ±0.2  
6-30 = ±0.4  
30-120 = ±0.6  
120-315 = ±1  
315-1000 = ±1.6  
1000-2000 = ±2.4

PART NO.		
N-1121A1-17-50		
APPROVED	DATE	
	03-31-'14	
CHECKED	DATE	TITLE
	03-31-'14	
DRAWN	DATE	DRAWING NO.
	03-31-'14	5824-1121A14-17-50
FILE NO.		R:\D\G\DWG\5824\1121A14\17\50

NO.	DESCRIPTION	MATERIAL	FINISH	Q'TY	DRAWING NO.
-----	-------------	----------	--------	------	-------------

SCALE	2.5/1	ISSUE	A
-------	-------	-------	---

1 2 3 4 5 6 7 8

F  
E  
D  
C  
B  
A

F  
E  
D  
C  
B  
A