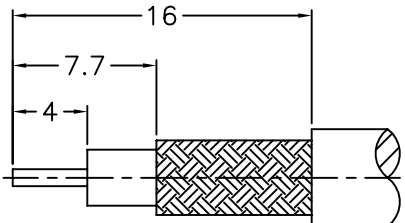
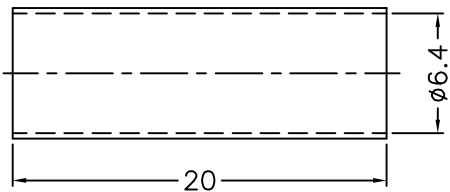
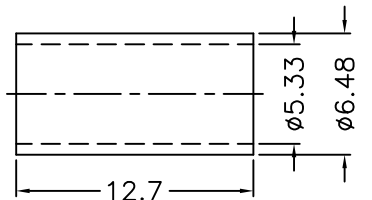
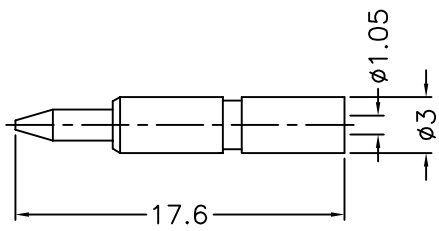
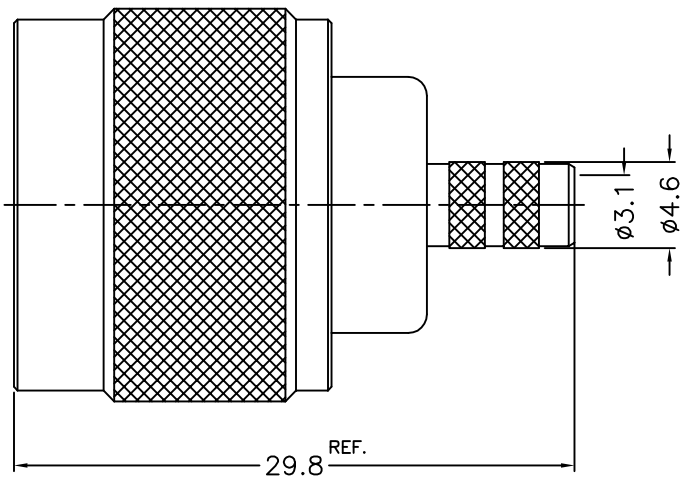


1 2 3 4 5 6 7 8

REVISIONS		
ISS	ZONE	DESCRIPTION\PER REQUEST\DATE



RECOMMENDED
CABLE STRIPPING DIM'S



NOTES: FINISH (PLATING THICKNESS IN MICRO-INCHES)
 1. BRASS
 2. NICKEL PL. 100 MIN. THICK OVER COPPER PL. 50 MIN. THICK
 3. GOLD PL. 3 MIN. THICK OVER NICKEL PL. 50 MIN. THICK OVER COPPER PL. 50 MIN. THICK
 4. TEFLON

1. CRIMPED FERRULE
HEX. CRIMP SIZE .213"
2. CONTACT PIN TO SOLDER

10	HEAT SHRINK TUBING	WITH GLUE	BLACK	1	GHT-64-200L
9	FERRULE	COPPER	NOTE 2	1	FR-533-648-127C
8	CONTACT PIN	NOTE 1	NOTE 3	1	5824-1000-8-1.05
7	RETAINER RING	SUS 304	NATURAL	1	5824-1000-7
6	GASKET	SILICONE	RED	1	GS-80-156-15
5	CONTACT BODY	NOTE 1	NOTE 2	1	5824-1000-5
4	INSULATOR	NOTE 4	NATURAL	1	5824-1000-4
3	BARREL	NOTE 1	NOTE 2	1	5824-1000-3-06
2	BODY	NOTE 1	NOTE 2	1	5824-1000-2
1	SHELL	NOTE 1	NOTE 2	1	5824-1000-1

DIMENSIONS ARE IN MILLIMETERS				PART NO.	
UNLESS OTHERWISE SPECIFIED TOLERANCES				N-1121A1-06-50	
0.5-6 = ±0.2				APPROVED	DATE
6-30 = ±0.4					04-01-'14
30-120 = ±0.6				CHECKED	DATE
120-315 = ±1					04-01-'14
315-1000 = ±1.6				DRAWN	DATE
1000-2000 = ±2.4					04-01-'14

		TITLE	N CRIMP PLUG (FOR RG-58U, 58A, 58C, 141, LMR195)
		DRAWING NO.	5824-1121A14-06-50
FILE NO.		R:\D\G\DWG\5824\1121A14\06\50	

NO.	DESCRIPTION	MATERIAL	FINISH	Q'TY	DRAWING NO.
-----	-------------	----------	--------	------	-------------

SCALE	2.5/1	ISSUE	A
-------	-------	-------	---

1 2 3 4 5 6 7 8

F
E
D
C
B
A

F
E
D
C
B
A