

1 2 3 4 5 6 7 8

REVISIONS		
ISS	ZONE	DESCRIPTION\PER REQUEST\DATE

F

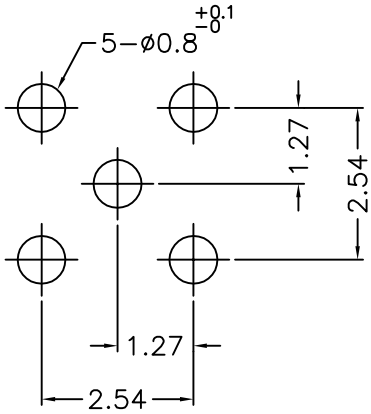
E

D

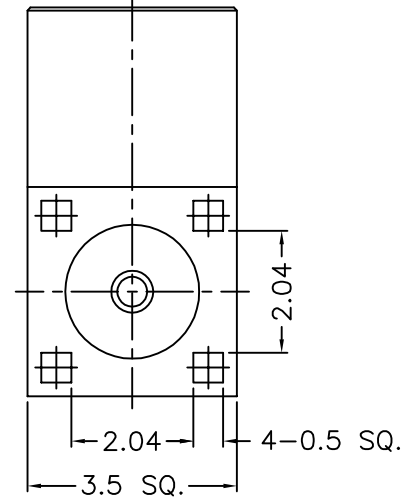
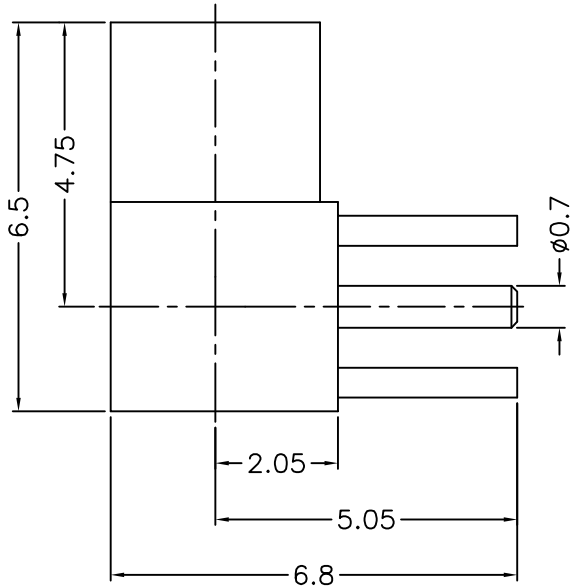
C

B

A



PCB MOUNTING HOLE




- NOTES: FINISH (PLATING THICKNESS IN MICRO-INCHES)
1. BRASS
  2. GOLD PL. 3 MIN. THICK OVER NICKEL PL. 50 MIN. THICK OVER COPPER PL. 50 MIN. THICK
  3. BERYLLIUM COPPER
  4. TEFLON

NO.	DESCRIPTION	MATERIAL	FINISH	Q'TY	DRAWING NO.
4	INSULATOR	NOTE 4	NATURAL	1	200-6252N1-4
3	CONTACT PIN	NOTE 3	NOTE 2	1	200-6252N3-3
2	INSULATOR	NOTE 4	NATURAL	1	200-6252N3-2 -50T
1	BODY	NOTE 1	NOTE 2	1	200-6252N3-1

DIMENSIONS ARE IN MILLIMETERS			
UNLESS OTHERWISE SPECIFIED TOLERANCES			
0.5-6	=	±0.2	
6-30	=	±0.4	
30-120	=	±0.6	
120-315	=	±1	
315-1000	=	±1.6	
1000-2000	=	±2.4	

PART NO.		MMCX-6252A1-50
APPROVED	DATE	11-08-'11
CHECKED	DATE	11-08-'11
DRAWN	DATE	11-08-'11

	
TITLE	
MMCX R/A P.C.B. JACK	
DRAWING NO.	
200-6252N3-50	
FILE NO. R:\D\G\DWG\200\6252N3\50	

F

E

D

C

B

A

1 2 3 4 5 6 7 8