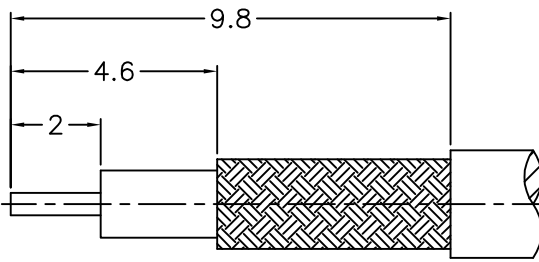


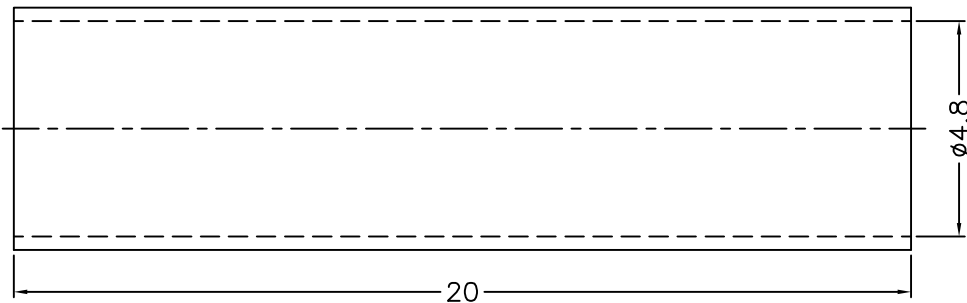
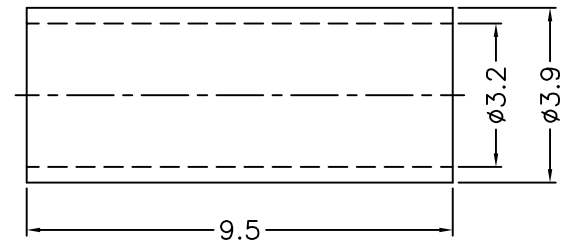
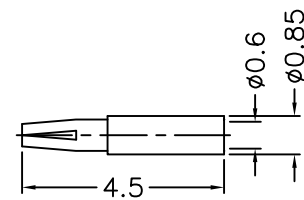
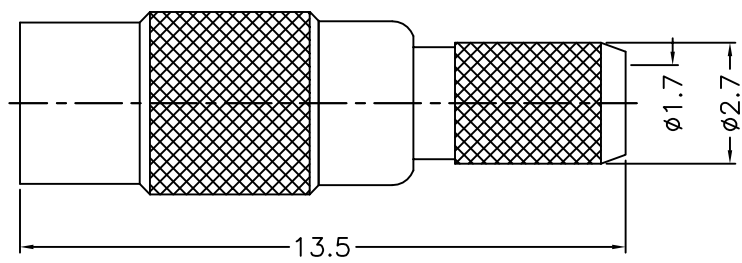
1 2 3 4 5 6 7 8

REVISIONS		
ISS	ZONE	DESCRIPTION\PER REQUEST\DATE



1. CRIMPED FERRULE
HEX. CRIMP SIZE .128"
2. CONTACT PIN TO SOLDER


RECOMMENDED
CABLE STRIPPING DIM'S



- NOTES: FINISH (PLATING THICKNESS IN MICRO-INCHES)
1. BRASS
 2. THIN GOLD OVER NICKEL PL. 50 MIN. THICK OVER COPPER PL. 50 MIN. THICK
 3. BERYLLIUM COPPER
 4. GOLD PL. 3 MIN. THICK OVER NICKEL PL. 50 MIN. THICK OVER COPPER PL. 50 MIN. THICK
 5. TEFLON

6	HEAT SHRINK TUBING	WITH GLUE	BLACK	1	GHT-48-200L
5	FERRULE	NOTE 1	NOTE 2	1	FR-32-39-95
4	CONTACT PIN	NOTE 3	NOTE 4	1	200-6111A1-4-0.6
3	BARREL	NOTE 1	NOTE 2	1	200-6111A1-3-02
2	INSULATOR	NOTE 5	NATURAL	1	200-6111A1-2-50T
1	BODY	NOTE 1	NOTE 2	1	200-6111A1-1
NO.	DESCRIPTION	MATERIAL	FINISH	Q'TY	DRAWING NO.

DIMENSIONS ARE IN MILLIMETERS			
UNLESS OTHERWISE SPECIFIED TOLERANCES			
0.5-6	=	±0.2	
6-30	=	±0.4	
30-120	=	±0.6	
120-315	=	±1	
315-1000	=	±1.6	
1000-2000	=	±2.4	
PART NO.		MMCX-6111A1-02-50	
APPROVED	DATE	04-01-'14	
CHECKED	DATE	04-01-'14	
DRAWN	DATE	04-01-'14	
SCALE	6/1	ISSUE	A

	
TITLE	MMCX CRIMP JACK (FOR RG-174/U,188A/U,316/U)
DRAWING NO.	200-6111A3-02-50
FILE NO.	R:\D\G\DWG\200\6111A3\02\50

1 2 3 4 5 6 7 8

F

F

E

E

D

D

C

C

B

B

A

A