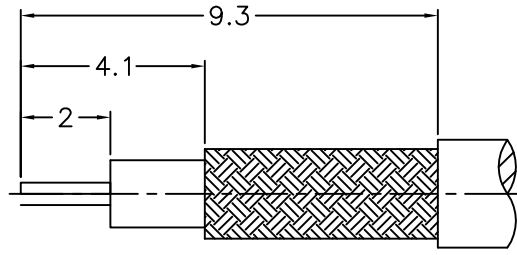


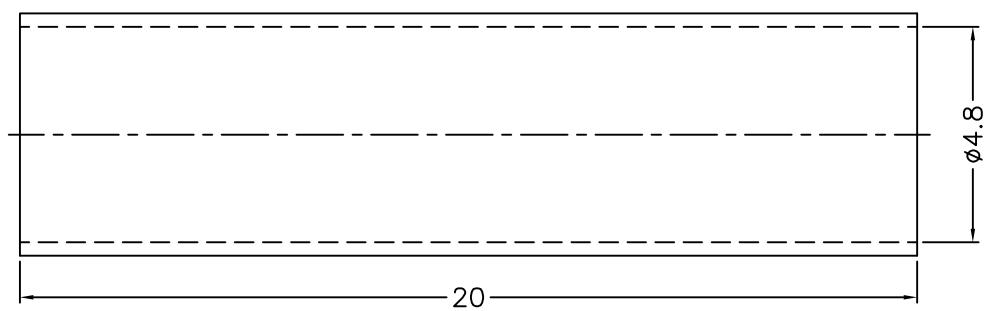
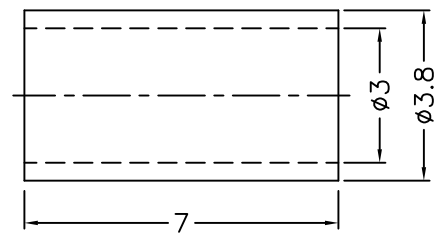
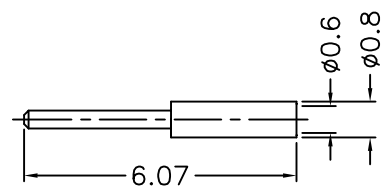
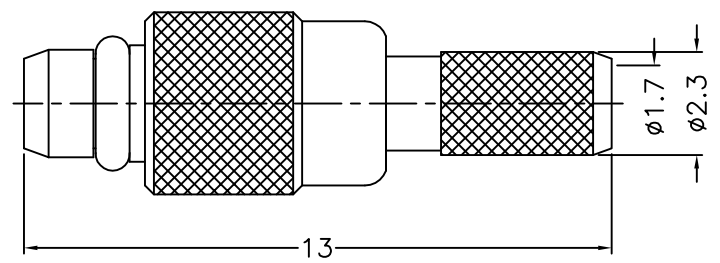
1 2 3 4 5 6 7 8

REVISIONS		
ISS	ZONE	DESCRIPTION\PER REQUEST\DATE



1. CRIMPED FERRULE
HEX. CRIMP SIZE .128"
2. CONTACT PIN TO SOLDER

RECOMMENDED
CABLE STRIPPING DIM'S



- NOTES: FINISH (PLATING THICKNESS IN MICRO-INCHES)
1. BRASS
 2. THIN GOLD OVER NICKEL PL. 50 MIN. THICK OVER COPPER PL. 50 MIN. THICK
 3. BERYLLIUM COPPER
 4. GOLD PL. 3 MIN. THICK OVER NICKEL PL. 50 MIN. THICK OVER COPPER PL. 50 MIN. THICK
 5. TEFLON

7	HEAT SHRINK TUBING	WITH GLUE	BLACK	1	GHT-48-200L
6	FERRULE	COPPER	NOTE 2	1	FR-30-38-70C
5	RETAINER RING	NOTE 3	NOTE 2	1	200-1000-5
4	CONTACT PIN	NOTE 1	NOTE 4	1	200-1121A2-4 -0.6
3	BARREL	NOTE 1	NOTE 2	1	200-1121A2-3 -02
2	INSULATOR	NOTE 5	NATURAL	1	200-1121A2-2 -50T
1	BODY	NOTE 1	NOTE 2	1	200-1121A2-1

DIMENSIONS ARE IN MILLIMETERS
UNLESS OTHERWISE SPECIFIED TOLERANCES
0.5-6 = ±0.2
6-30 = ±0.4
30-120 = ±0.6
120-315 = ±1
315-1000 = ±1.6
1000-2000 = ±2.4

PART NO. MMCX-1121A1-02-50	
APPROVED	DATE 04-01-'14
CHECKED	DATE 04-01-'14
DRAWN	DATE 04-01-'14

TITLE
MMCX CRIMP PLUG
(FOR RG-174/U,188A/U,316/U)

DRAWING NO.
200-1121A7-02-50

FILE NO. R:\D\G\DWG\200\1121A7\02\50

1 2 3 4 5 6 7 8