

Type MLP - flexible for high specifications

Shrink-Kon® - Thin wall heat shrink tubing

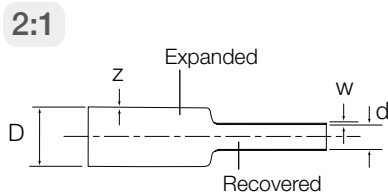


Characteristics

- Typical applications are insulation, corrosion protection, component strain relief and connections in applications requiring the highest specifications (e.g. aeronautical and military applications)
- Internal diameters from 1.2 mm to 25.4 mm
- Dual Listed
- Meets MIL-DTL-23053/5 requirements, Class 1 and Class 2
- Weather UV-resistant
- Good chemical resistance
- Flame retardant
- Available colours: see below (see page 6 for product reference structure)

Technical Information

Wall thickness	Thin
Shrink ratio	2:1
Tube characteristics	Single wall
Tube length	1.22 m
Temperature range	-55°C to +135°C
Shrinking temperature	+90°C
Material	Crosslinked polyolefin
IP rating	IP60
Standard colour	Black
Other properties	Silicone, Cadmium and Lead free Transparent version: Halogen free



E79546



702106



Product Ref.	Expanded diameter		Fully recovered diameter	Wall thickness before shrinking	Wall thickness after shrinking	Length per box
	D [inch]	D [mm]	d [mm]	z [mm]	w [mm]	
MLP46-0-A	3/64	1.2	0.6	0.20	0.4	25
MLP63-0-A	1/16	1.6	0.8	0.20	0.4	25
MLP93-0-A	3/32	2.4	1.2	0.25	0.5	25
MLP125-0-A	1/8	3.2	1.6	0.25	0.5	25
MLP187-0-A	3/16	4.8	2.4	0.25	0.5	25
MLP250-0-A	1/4	6.4	3.2	0.30	0.6	25
MLP375-0-A	3/8	9.5	4.8	0.30	0.6	25
MLP500-0-A	1/2	12.7	6.4	0.30	0.6	25
MLP750-0-A	3/4	19.0	9.5	0.40	0.8	10
MLP1000-0-A	1	25.4	12.7	0.45	0.9	10

For other colours add colour suffix to Product Reference:

0 = black, 2 = red, 4 = yellow, 6 = blue, 9 = white and C = transparent



Product Ref.	Expanded diameter		Fully recovered diameter	Wall thickness before shrinking	Wall thickness after shrinking	Length per reel
	D [inch]	D [mm]	d [mm]	z [mm]	w [mm]	
MLP46-0-BG*	3/64	1.2	0.6	0.20	0.4	300
MLP63-0-BG*	1/16	1.6	0.8	0.20	0.4	300
MLP93-0-BG*	3/32	2.4	1.2	0.25	0.5	300
MLP125-0-BG*	1/8	3.2	1.6	0.25	0.5	300
MLP187-0-BG*	3/16	4.8	2.4	0.25	0.5	300
MLP250-0-BG*	1/4	6.4	3.2	0.30	0.6	300
MLP375-0-BG*	3/8	9.5	4.8	0.30	0.6	150
MLP500-0-BG*	1/2	12.7	6.4	0.30	0.8	100
MLP750-0-BG*	3/4	19.0	9.5	0.40	0.8	50
MLP1000-0-BG*	1	25.4	12.7	0.45	0.9	50
MLP46-0-E	3/64	1.2	0.6	0.20	0.4	150
MLP63-0-E	1/16	1.6	0.8	0.20	0.4	150
MLP93-0-E	3/32	2.4	1.2	0.25	0.5	150
MLP125-0-E	1/8	3.2	1.6	0.25	0.5	150
MLP187-0-E	3/16	4.8	2.4	0.25	0.5	75
MLP250-0-E	1/4	6.4	3.2	0.30	0.6	75
MLP375-0-E	3/8	9.5	4.8	0.30	0.6	75
MLP500-0-E	1/2	12.7	6.4	0.30	0.8	50
MLP750-0-E	3/4	19.0	9.5	0.40	0.8	30
MLP1000-0-E	1	25.4	12.7	0.45	0.9	30

E-reels: for other colours add colour suffix to Product Reference:

0 = black, 2 = red, 4 = yellow, 6 = blue, 9 = white and C = transparent

*BG-reels only available in black (-0)

