

LEV100 Contactor with Aux Contact 100A/1000Vdc Power Switching SPST-NO Auxiliary Contact (form X)

Product Facts:

- Lowest cost, 100A hermetically sealed contactor with NO auxiliary contact.
- Great for HV isolation and Carry-8kVdc isolation between open main contacts
- Side or bottom mount – not position sensitive.
- Hermetically Sealed Operates in explosive/harsh environments without oxidation or contamination of contacts, including long periods of non-operation.
- Typical applications include automotive battery switching and backup, power/motor control circuit isolation, circuit protection and safety.
- 12, 24 and 48Vdc coils available.
- UL 508 rated



PRE PRODUCTION DATA SHEET
 03-20-2015 Rev 2
 PH. 805-220-2055 FAX 805-220-2075
 550 LINDEN AVE, CARPINTERIA, CA 93013

LEV100 Contactor with Auxiliary Contact

Dimensions shown for reference only.
 Specifications subject to change.

CAGE CODE	SCALE	SHEET
18741	NONE	1 of 5

General Specifications


Physical Data	Units	
Contact Arrangement: Main Contacts		SPST-NO (Form X)
Auxiliary (3A, 24Vdc) [Note 1]		SPST
Dimensions		See Sheet 4 & 5
Weight, Nominal	kg	0.190

Environmental Data		
Shock, 11ms ½ sine (operating)	G peak	20
Sine Vibration, 20 G _{pk}	Hz	55-2000
Operating Temperature Range	°C	-40 to +80
Noise Emission (at 100 mm distance)	dB(a)	70

Electrical Data		
Voltage Rating: Main Contacts Switching (max)	Vdc	1000
Current Rating, Continuous: Main Contacts [Note 2]	A	100
Short Term Current (3 min) [Note 3]		200
Contact Voltage Drop: Main Contacts	V	0.05 max @ rated current
Hot Switching performance (polarity sensitive):		
50A make/break @+1000Vdc	Cycles	50000
100A make/break @ +1000Vdc		6000
100A make/break @ -400Vdc		1000*
200A make/break @ +400Vdc	Cycles	500*
1000A break only @ +400Vdc		10*
600A make only	Cycles	10
Maximum Short Circuit Current (1/2 cycle, 60 Hz) (through closed contacts)	A	1250
Mechanical Life	Cycles	1,000,000
Dielectric Withstand Voltage: [Note 4]		
Between Open Contacts	Vrms/Vdc	5600/8000
Contacts to Coil	Vrms/Vdc	2000/4000
Insulation resistance		
Terminal to Terminal/ Terminals to Coil	MΩ	100 min @ 500Vdc new 50 min @ 500Vdc end of life

Coil Data				
Coil Voltage, Nominal/ Max	Vdc	12/16	24/28	48/52
Coil Resistance (20°C)	Ω	33	126	540
Pick Up Voltage (20°C)	Vdc	9	18	36
Dropout Voltage (20°C)	Vdc	≤1.2	≤ 2.4	≤ 4.8
Operating Voltage (-40°C to +80°C)	Vdc	See Figure 1	See Figure 1	See Figure 1
Coil Current (nominal at 20°C, 12 Vdc)	A	0.36	0.19	0.088
Coil Power (max @ Vnom, +80°C)	W	3.5		
Coil Power (nom @ Vnom, 20°C)		4.5		
Coil Power (max @ Vmax, -40°C)		10		
Main Contacts:				
Operate Time (max)	ms	40		
Operate Bounce (max)	ms	5		
Release time	ms	10		

*: To be verified by test

	PRE PRODUCTION DATA SHEET 03-20-2015 Rev 2 PH. 805-220-2055 FAX 805-220-2075 550 LINDEN AVE, CARPINTERIA, CA 93013		
	LEV100 Contactor with Auxiliary Contact		
Dimensions shown for reference only. Specifications subject to change.	CAGE CODE 18741	SCALE NONE	SHEET 2 of 5

Notes:

- [1] Auxiliary contact ratings: 3A, 125Vac to 50,000 cycles; 3A, 250Vac to 30,000 cycles; 3A, 24Vdc to 10,000 cycles.
Auxiliary contact is mechanically linked to the main power contacts.
- [2] 22 AWG wires, UL3239 rated, 15Kv, .029" dia. conductor. Keep wires below 105C max continuous (XLPE insulation).
- [3] 3 minutes at +40C ambient, 1 minute at +80C ambient with (22 AWG) conductor.
- [4] 2200 Vrms minimum under all conditions, until end of life.

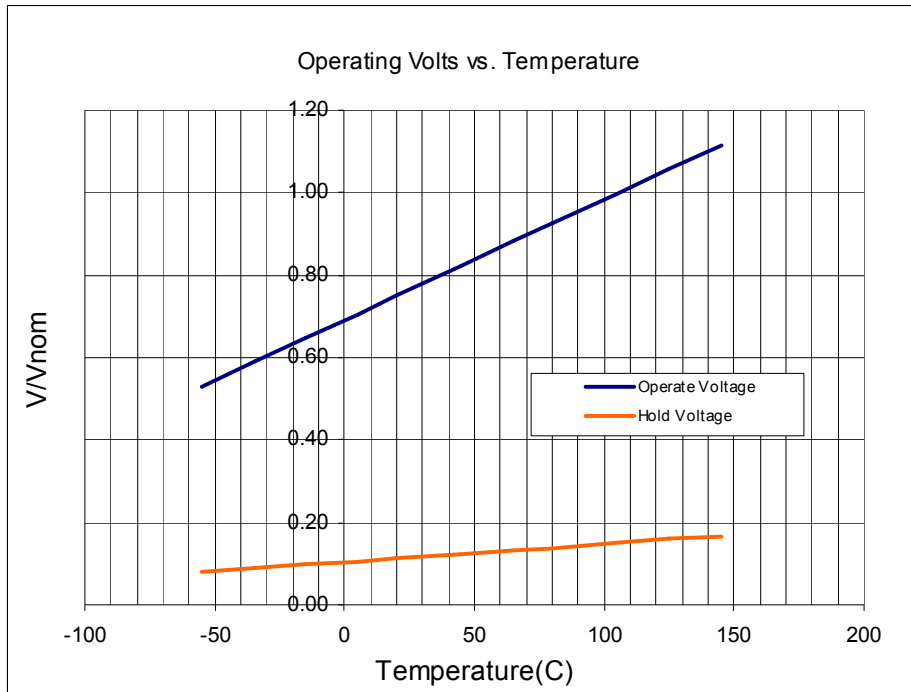


Figure 1

Part Numbering System

Typical PN

Series:
LEV100=100A, 1000 Vdc Contactor

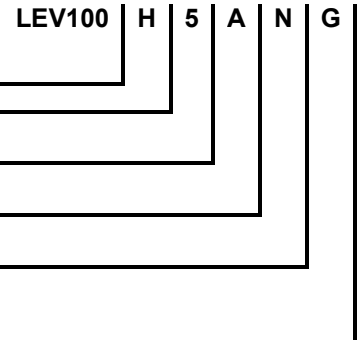
Contact Form: G = NO with 1PST NC aux; H = NO with 1PST NO Aux; K = NO with 1PDT Aux

Coil Voltage:
4 = 12Vdc 5 = 24 Vdc 6 = 48 Vdc

Coil Wire Length:
A = 15" [.4M] B = 6" [.15M]

Coil Termination:
N = None – Stripped Wires

Mounting:
G = Bottom Mount H = Side Mount
2x #8, M5x10 Mains 2x #8, M5x10 Mains



PRE PRODUCTION DATA SHEET

03-20-2015 Rev 2

PH. 805-220-2055 FAX 805-220-2075
550 LINDEN AVE, CARPINTERIA, CA 93013

LEV100 Contactor with Auxiliary Contact

Dimensions shown for reference only.
Specifications subject to change.

CAGE CODE 18741

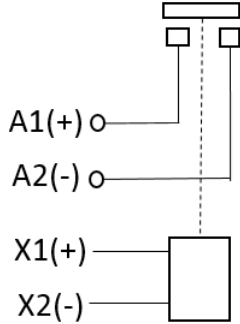
SCALE NONE

SHEET 3 of 5

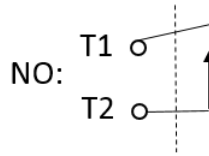
Part Drawing

NOTES: Contactors should be installed so that current flows from A1 (+) to A2 (-)
 Contactors should not be switched bi-directionally

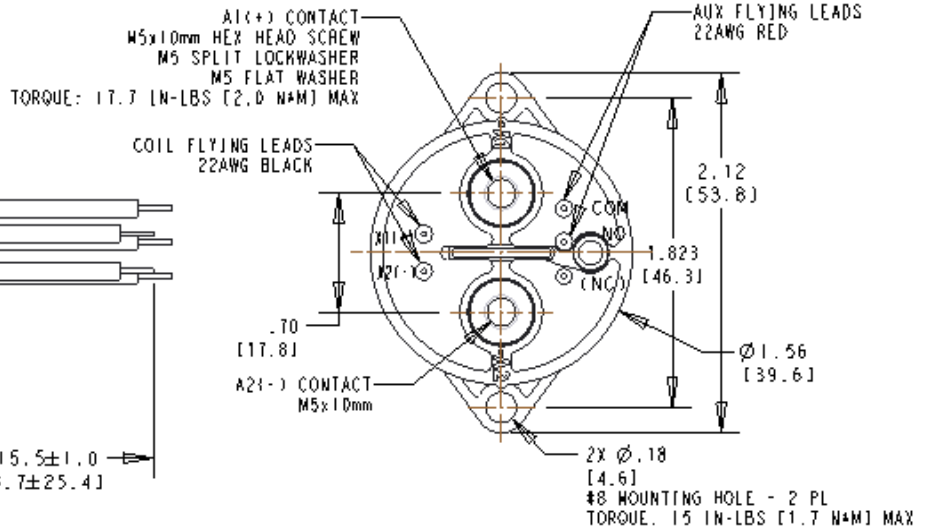
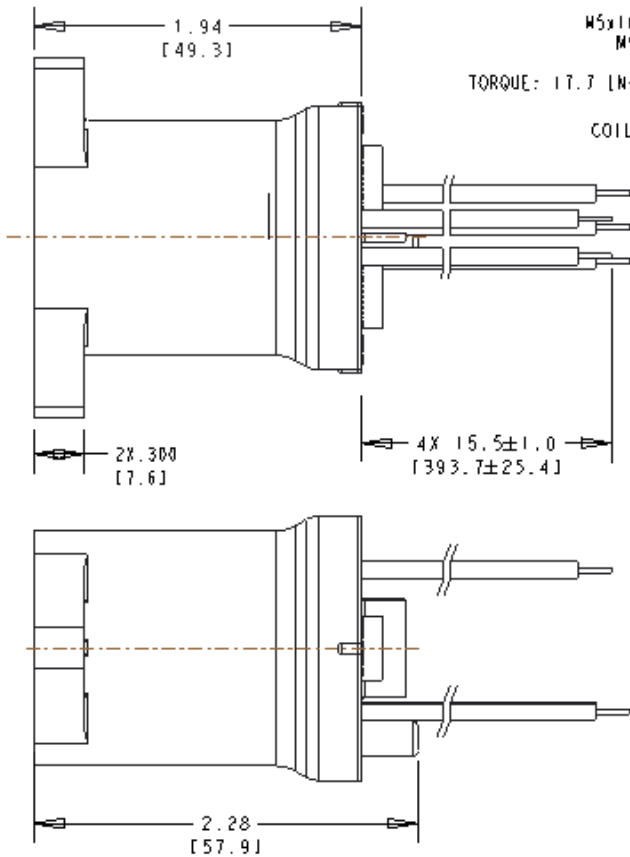
Power Contacts



Auxiliary Contacts



Bottom Mount Package = LEV100H5ANH:



PRE PRODUCTION DATA SHEET

03-20-2015 Rev 2

PH. 805-220-2055 FAX 805-220-2075
 550 LINDEN AVE, CARPINTERIA, CA 93013

LEV100 Contactor with Auxiliary Contact

Dimensions shown for reference only.
 Specifications subject to change.

CAGE CODE

18741

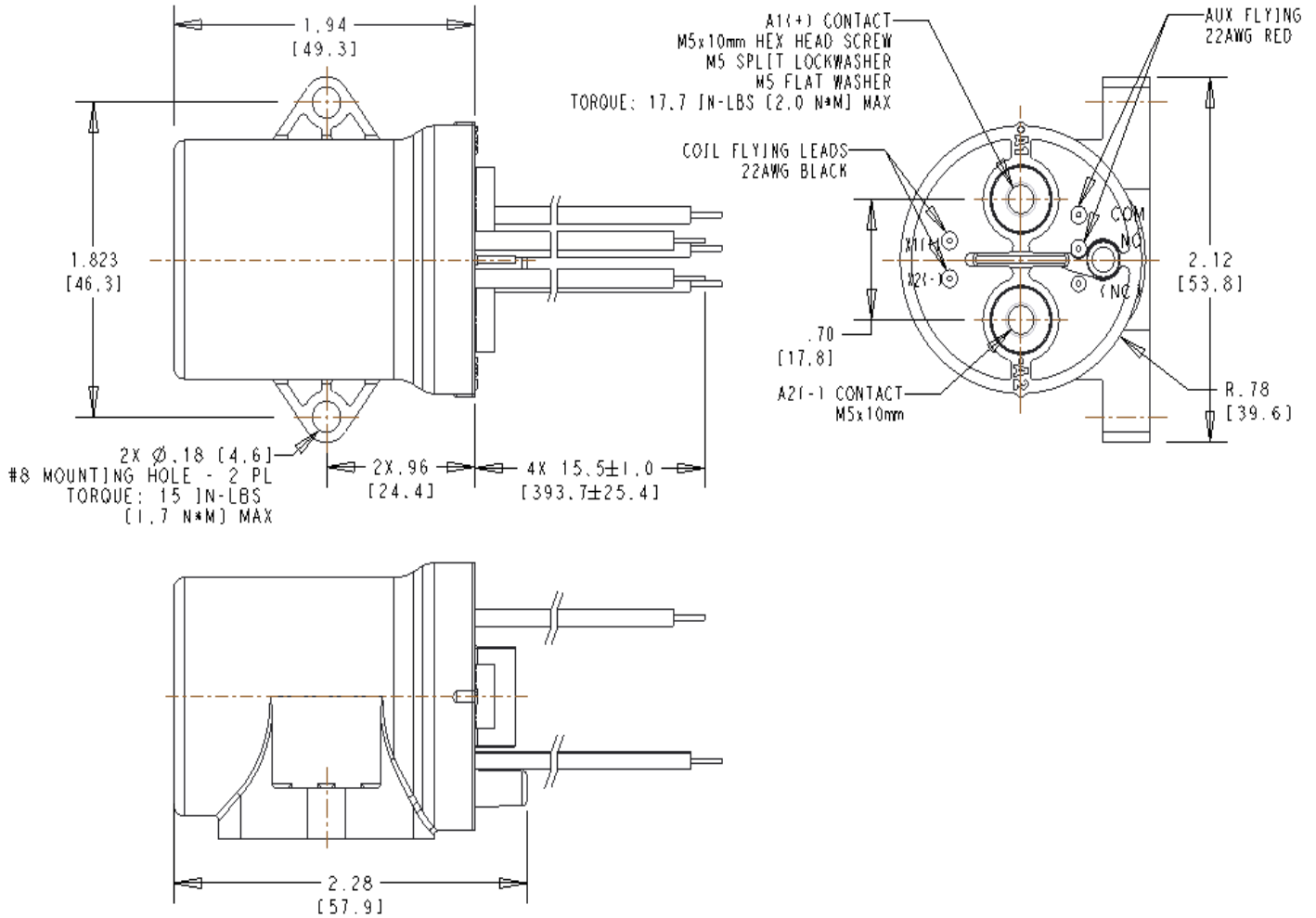
SCALE

NONE

SHEET

4 of 5

Side Mount Package = LEV100H5ANG:



PRE PRODUCTION DATA SHEET

03-20-2015 Rev 2

PH. 805-220-2055 FAX 805-220-2075
550 LINDEN AVE, CARPINTERIA, CA 93013

LEV100 Contactor with Auxiliary Contact

Dimensions shown for reference only.
Specifications subject to change.

CAGE CODE

18741

SCALE

NONE

SHEET

5 of 5