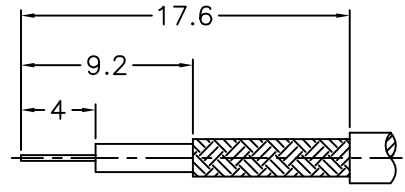
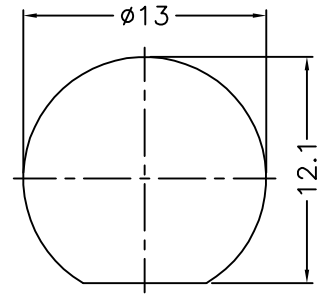


REVISIONS		
ISS	ZONE	DESCRIPTION\PER REQUEST\DATE

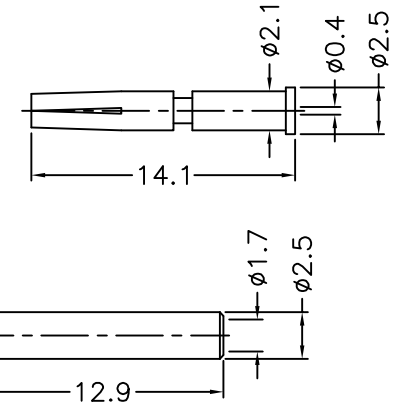
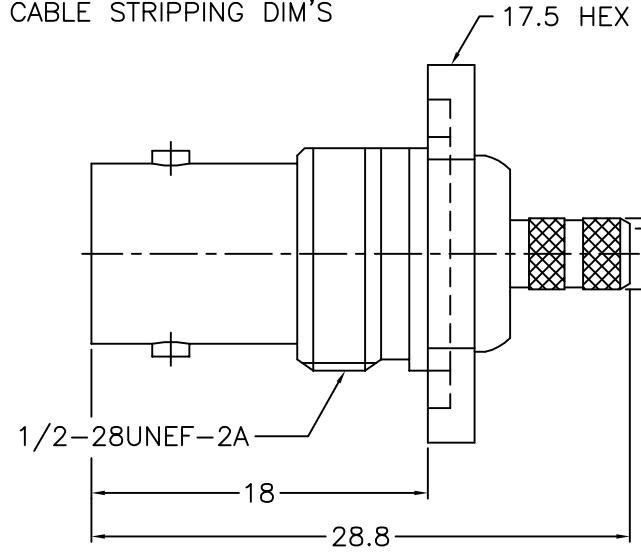
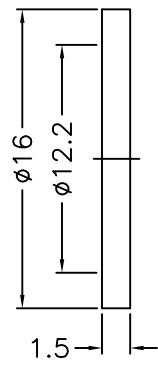
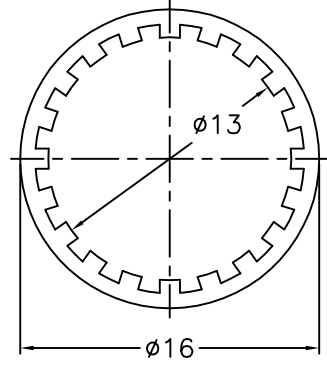
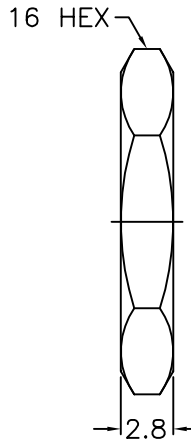
1. CRIMPED FERRULE  
HEX. CRIMP SIZE .178"
2. CRIMPED CONTACT PIN  
HEX. CRIMP SIZE .068"
3. MAX. PANEL THICKNESS=3.5mm



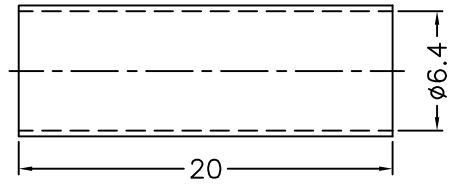
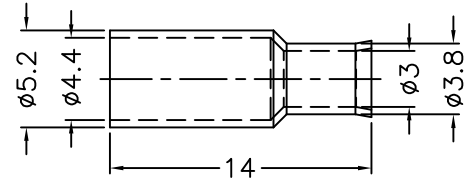
RECOMMENDED  
CABLE STRIPPING DIM'S



RECOMMENDED  
MOUNTING HOLE




- NOTES: FINISH (PLATING THICKNESS IN MICRO-INCHES)
1. BRASS
  2. NICKEL PL. 100 MIN. THICK OVER COPPER PL. 50 MIN. THICK
  3. PHOSPHOR BRONZE
  4. GOLD PL. 3 MIN. THICK OVER NICKEL PL. 50 MIN. THICK OVER COPPER PL. 50 MIN. THICK
  5. DELRIN



11	HEAT SHRINK TUBING	WITH GLUE	BLACK	1	GHT-64-200L
10	FERRULE	NOTE 1	NOTE 2	1	FR-44-52-30-38-140
9	SLEEVE	NOTE 5	NATURAL	1	SL-17-25-129
8	CONTACT PIN	NOTE 3	NOTE 4	1	900-6000-8-0.4
7	HEX NUT	NOTE 1	NOTE 2	1	HN-16-1228-28
6	LOCK WASHER	NOTE 1	NOTE 2	1	LW-13-16-05
5	GASKET	RUBBER	RED	1	GS-122-160-15
4	BARREL	NOTE 1	NOTE 2	1	900-6421E1-4-02
3	INSULATOR	NOTE 5	NATURAL	1	900-6000-3-75D
2	BODY	NOTE 1	NOTE 2	1	900-6000-2
1	HOUSING	NOTE 1	NOTE 2	1	900-6421E1-1
NO.	DESCRIPTION	MATERIAL	FINISH	Q'TY	DRAWING NO.

DIMENSIONS ARE IN MILLIMETERS			
UNLESS OTHERWISE SPECIFIED TOLERANCES			
0.5-6	=	±0.2	
6-30	=	±0.4	
30-120	=	±0.6	
120-315	=	±1	
315-1000	=	±1.6	
1000-2000	=	±2.4	
SCALE	2.5/1	ISSUE	A

PART NO.		BNC-6421A1-03-75D	
APPROVED	DATE	03-31-'14	
CHECKED	DATE	03-31-'14	
DRAWN	DATE	03-31-'14	

 <b>ELIMEC</b> electro-mechanical engineering	
TITLE	BNC BULKHEAD CRIMP JACK (FOR RG-179/U, 187A/U CABLE)
DRAWING NO.	900-6421E2-03-75D
FILE NO.	R:\D\G\DWG\900\6421E2\03\75D