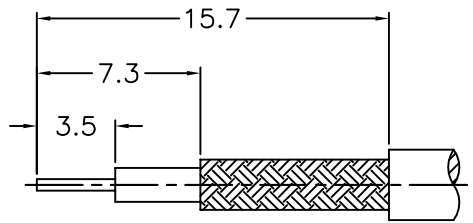


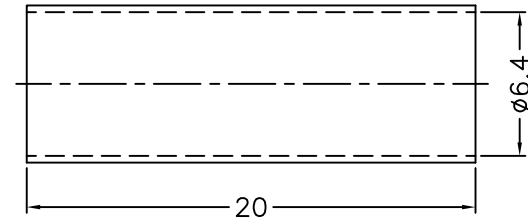
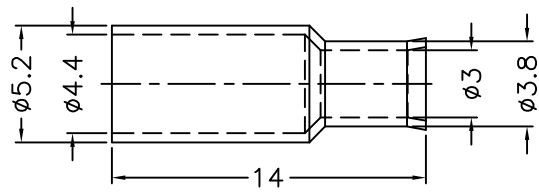
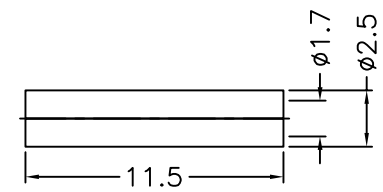
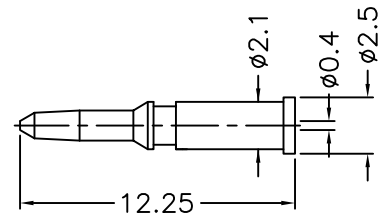
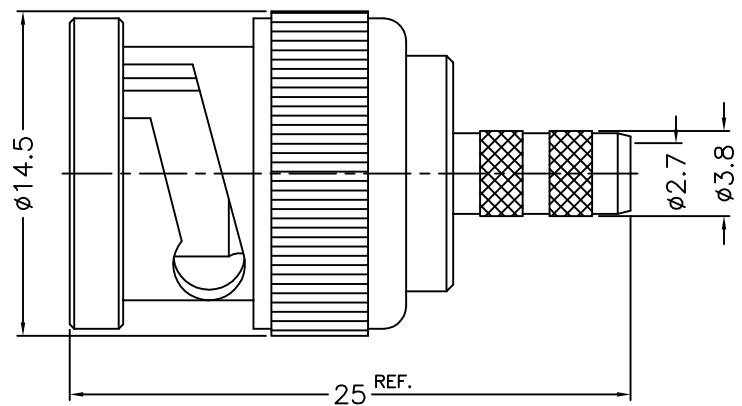
1 2 3 4 5 6 7 8

REVISIONS		
ISS	ZONE	DESCRIPTION\PER REQUEST\DATE



RECOMMENDED  
CABLE STRIPPING DIM'S


- 1. CRIMPED FERRULE  
HEX CRIMP SIZE .178"
- 2. CRIMPED CONTACT PIN  
HEX CRIMP SIZE .068"



NOTES: FINISH (PLATING THICKNESS IN MICRO-INCHES)  
 1. BRASS  
 2. NICKEL PL. 100 MIN. THICK OVER COPPER PL. 50 MIN. THICK  
 3. GOLD PL. 3 MIN. THICK OVER NICKEL PL. 50 MIN. THICK OVER COPPER PL. 50 MIN. THICK  
 4. DELRIN

11	HEAT SHRINK TUBING	WITH GLUE	BLACK	1	GHT-64-200L
10	FERRULE	NOTE 1	NOTE 2	1	FR-44-52-30-38-140
9	SLEEVE	NOTE 4	NATURAL	1	SL-17-25-115
8	CONTACT PIN	NOTE 1	NOTE 3	1	900-1000-8-CO.4
7	WASHER	NOTE 1	NOTE 2	1	WS-90-128-08
6	SPRING	SK5	NOTE 2	1	900-1000-6
5	RETAINER RING	NOTE 1	NOTE 2	1	900-1000-5
4	GASKET	RUBBER	RED	1	GS-80-115-15
3	INSULATOR	NOTE 4	NATURAL	1	900-1000-3-75D
2	BODY	NOTE 1	NOTE 2	1	900-1000-2-02
1	SHELL	NOTE 1	NOTE 2	1	900-1000-1
NO.	DESCRIPTION	MATERIAL	FINISH	Q'TY	DRAWING NO.

DIMENSIONS ARE IN MILLIMETERS  
 UNLESS OTHERWISE SPECIFIED TOLERANCES  
 0.5-6 = ±0.2  
 6-30 = ±0.4  
 30-120 = ±0.6  
 120-315 = ±1  
 315-1000 = ±1.6  
 1000-2000 = ±2.4

PART NO.		
BNC-1121A1-03-75D		
APPROVED	DATE	
03-31-'14		
CHECKED	DATE	TITLE
03-31-'14		BNC CRIMP PLUG (FOR RG-179, 187 CABLE)
DRAWN	DATE	DRAWING NO.
03-31-'14		900-1121E11-03-75D
FILE NO.		R:\D\G\DWG\900\112E11\03\75D

1 2 3 4 5 6 7 8