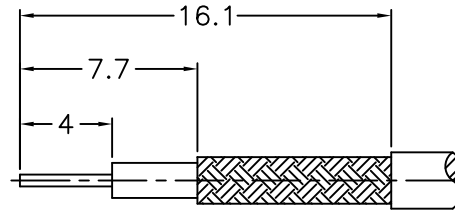
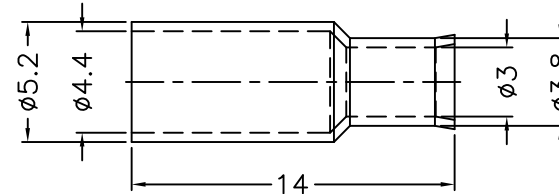
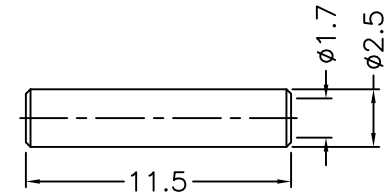
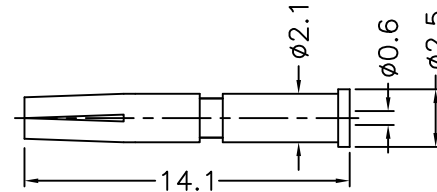
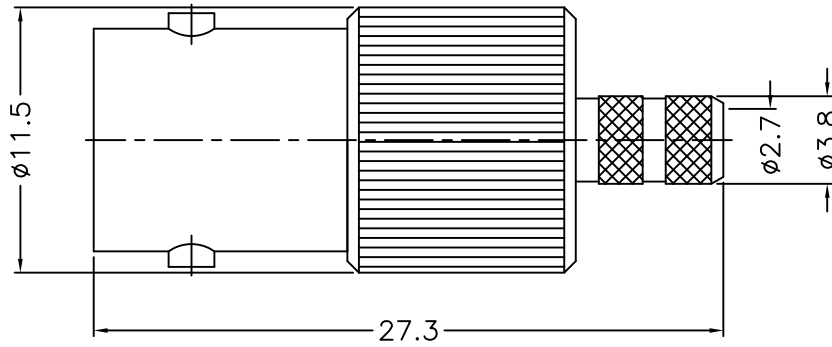


1 2 3 4 5 6 7 8

REVISIONS				
ISS	ZONE	DESCRIPTION\PER REQUEST\DATE		
B	D-2	DESIGN WAS CHANGED\RD-DM0611060001\11-06-'17		



RECOMMENDED  
CABLE STRIPPING DIM'S  
(建議剝線尺寸)



RoHS COMPLIANT

NOTES: FINISH (PLATING THICKNESS IN MICRO-INCHES)

1. BRASS
2. NICKEL PL. 100 MIN. THICK OVER COPPER PL. 50 MIN. THICK
3. PHOSPHOR BRONZE
4. GOLD PL. 3 MIN. THICK OVER NICKEL PL. 50 MIN. THICK OVER COPPER PL. 50 MIN. THICK
5. DELRIN

1. CRIMPED FERRULE  
HEX CRIMP SIZE .178"
2. CRIMPED CONTACT PIN  
HEX CRIMP SIZE .068"

						DIMENSIONS ARE IN MILLIMETERS				PART NO.		G.L.I.	
						UNLESS OTHERWISE SPECIFIED TOLERANCES				APPROVED			
6	FERRULE	NOTE 1	NOTE 2	1	FR-44-52-30 -38-140	0.5-6 = ±0.2				DATE		BNC CRIMP JACK	
5	SLEEVE	NOTE 5	NATURAL	1	SL-17-25-115	6-30 = ±0.4				11-06-'17		(FOR RG-174, 188A, 316, LMR100)	
4	CONTACT PIN	NOTE 3	NOTE 4	1	900-6000-8-0.6	30-120 = ±0.6				CHECKED		DRAWING NO.	
3	LOCK RING	IRON	NOTE 2	1	900-6000-4	120-315 = ±1				DATE		900-6121E1-02-50D	
2	INSULATOR	NOTE 5	NATURAL	1	900-6000-3-50D	315-1000 = ±1.6				DRAWN		FILE NO.	
1	BODY	NOTE 1	NOTE 2	1	900-6000-1-02	1000-2000 = ±2.4				DATE		R:\D\G\DWG\900\6121E1\02\50D	
NO.	DESCRIPTION	MATERIAL	FINISH	Q'TY	DRAWING NO.	SCALE	3/1	ISSUE	B	11-06-'17			

1 2 3 4 5 6 7 8