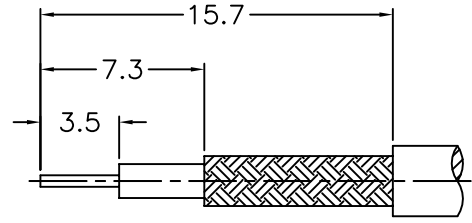
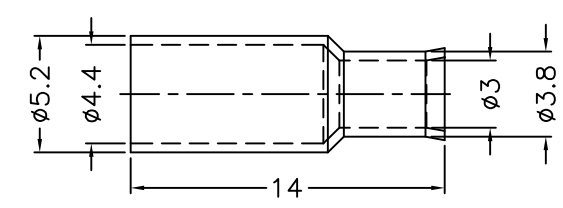
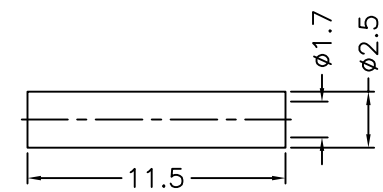
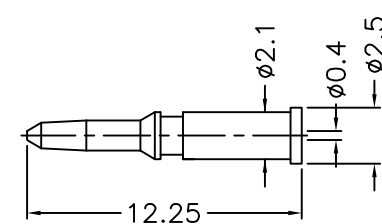
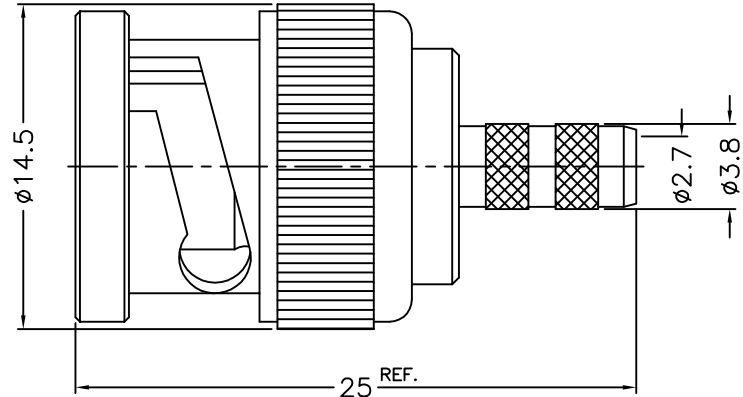


1 2 3 4 5 6 7 8

REVISIONS		
ISS	ZONE	DESCRIPTION\PER REQUEST\DATE



RECOMMENDED
CABLE STRIPPING DIM'S
(建議剝線尺寸)



NOTES: FINISH (PLATING THICKNESS IN MICRO-INCHES)
 1. BRASS
 2. NICKEL PL. 100 MIN. THICK OVER COPPER PL. 50 MIN. THICK
 3. GOLD PL. 3 MIN. THICK OVER NICKEL PL. 50 MIN. THICK OVER COPPER PL. 50 MIN. THICK
 4. DELRIN

1. CRIMPED FERRULE
HEX CRIMP SIZE .178"
 2. CRIMPED CONTACT PIN
HEX CRIMP SIZE .068"

10	FERRULE	NOTE 1	NOTE 2	1	FR-44-52-30-38-140
9	SLEEVE	NOTE 4	NATURAL	1	SL-17-25-115
8	CONTACT PIN	NOTE 1	NOTE 3	1	900-1000-8-C0.4
7	WASHER	NOTE 1	NOTE 2	1	WS-90-128-08
6	SPRING	SK5	NOTE 2	1	900-1000-6
5	RETAINER RING	NOTE 1	NOTE 2	1	900-1000-5
4	GASKET	RUBBER	RED	1	GS-80-115-15
3	INSULATOR	NOTE 4	NATURAL	1	900-1000-3-75D
2	BODY	NOTE 1	NOTE 2	1	900-1000-2-02
1	SHELL	NOTE 1	NOTE 2	1	900-1000-1
NO.	DESCRIPTION	MATERIAL	FINISH	Q'TY	DRAWING NO.

DIMENSIONS ARE IN MILLIMETERS
 UNLESS OTHERWISE SPECIFIED TOLERANCES
 0.5-6 = ±0.2
 6-30 = ±0.4
 30-120 = ±0.6
 120-315 = ±1
 315-1000 = ±1.6
 1000-2000 = ±2.4

PART NO.	
APPROVED	DATE 01-06-'11
CHECKED	DATE 01-06-'11
DRAWN	DATE 01-06-'11

G.L.I.	
TITLE BNC CRIMP PLUG (FOR RG-179, 187 CABLE)	
DRAWING NO. 900-1121E1-03-75D	
FILE NO. R:\D\G\DWG\900\112E1\03\75D	

1 2 3 4 5 6 7 8

F
E
D
C
B
A

F
E
D
C
B
A