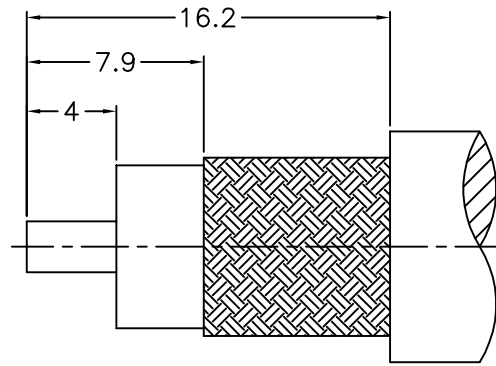
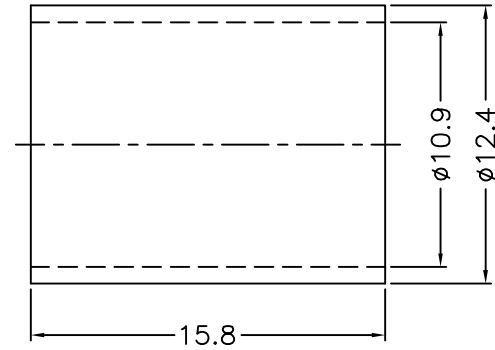
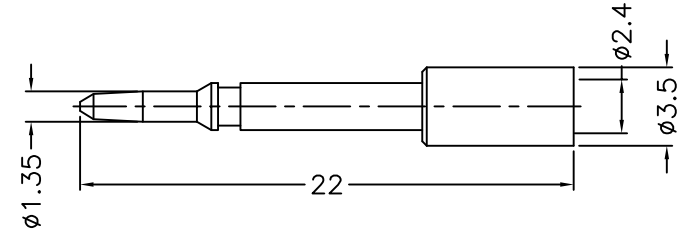
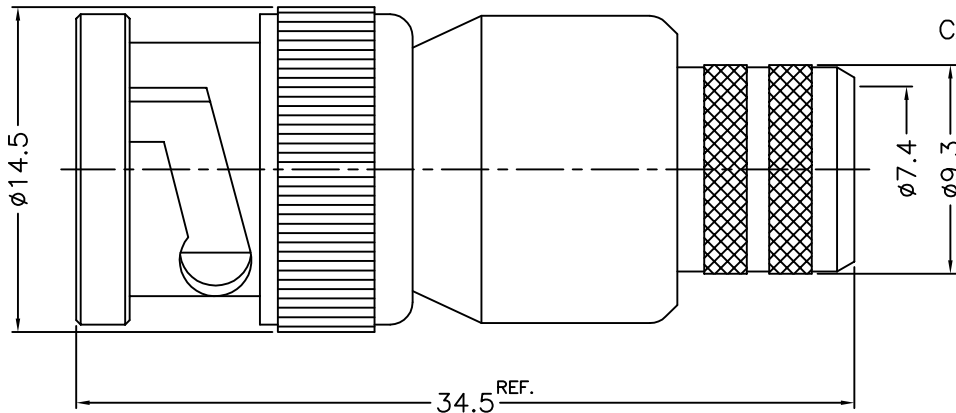


1 2 3 4 5 6 7 8

REVISIONS		
ISS	ZONE	DESCRIPTION\PER REQUEST\DATE



RECOMMENDED
CABLE STRIPPING DIM'S
(建議剝線尺寸)



NOTES: FINISH (PLATING THICKNESS IN MICRO-INCHES)
 1. BRASS
 2. NICKEL PL. 100 MIN. THICK OVER COPPER PL. 50 MIN. THICK
 3. GOLD PL. 3 MIN. THICK OVER NICKEL PL. 50 MIN. THICK OVER COPPER PL. 50 MIN. THICK
 4. TEFLON

1. CRIMPED FERRULE
HEX. CRIMP SIZE .429"
 2. CRIMPED CONTACT PIN
HEX. CRIMP SIZE .118"

10	FERRULE	NOTE 1	NOTE 2	1	FR-109-124-158
9	CONTACT PIN	NOTE 1	NOTE 3	1	900-1121A6-9 -2.4
8	WASHER	NOTE 1	NOTE 2	1	WS-90-128-08
7	SPRING	SK5	NOTE 2	1	900-1000-6
6	RETAINER RING	NOTE 1	NOTE 2	1	900-1000-5
5	GASKET	RUBBER	RED	1	GS-80-115-15
4	BARREL	NOTE 1	NOTE 2	1	5824-1000-3-17
3	INSULATOR	NOTE 4	NATURAL	1	900-1121A6-3 -50T
2	BODY	NOTE 1	NOTE 2	1	900-1121A6-2
1	SHELL	NOTE 1	NOTE 2	1	900-1000-1
NO.	DESCRIPTION	MATERIAL	FINISH	Q'TY	DRAWING NO.

DIMENSIONS ARE IN MILLIMETERS				PART NO.	
UNLESS OTHERWISE SPECIFIED TOLERANCES				APPROVED	DATE
0.5-6	= ±0.2	6-30	= ±0.4	11-04-'11	TITLE
30-120	= ±0.6	120-315	= ±1	11-04-'11	BNC CRIMP PLUG (FOR RG-8, 8A, 9, 213, 214)
315-1000	= ±1.6	1000-2000	= ±2.4	11-04-'11	DRAWING NO.
SCALE	3/1	ISSUE	A	11-04-'11	900-1121A6-18-50

G.L.I.		TITLE	BNC CRIMP PLUG (FOR RG-8, 8A, 9, 213, 214)
		DRAWING NO.	900-1121A6-18-50
FILE NO.		R:\D\G\DWG\900\1121A6\18\50	

1 2 3 4 5 6 7 8

F
E
D
C
B
A

F
E
D
C
B
A