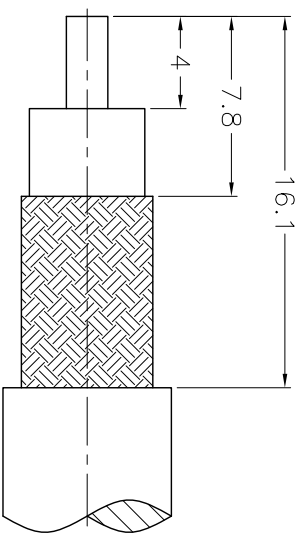
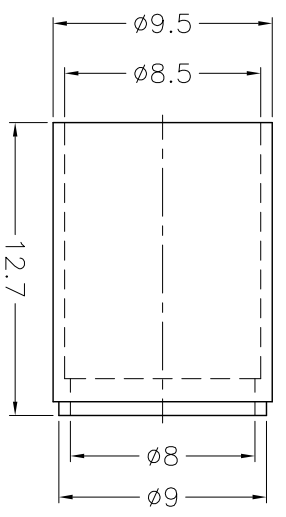
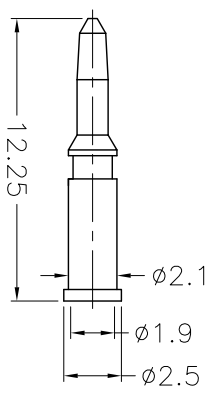
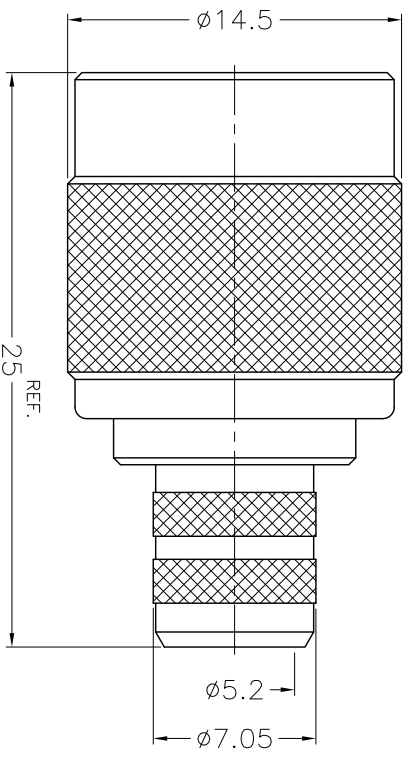


1		2		3		4		5		6		7		8	
REVISIONS															
ISS	ZONE	DESCRIPTION\PER REQUEST\DATE													
A1	A-7	TITLE WAS CHANGED\N/A\03-22-'18													



RECOMMENDED  
CABLE STRIPPING DIM'S  
(建議剝線尺寸)



NOTES: FINISH (PLATING THICKNESS IN MICRO-INCHES)  
 1. BRASS  
 2. NICKEL, PL. 100 MIN. THICK OVER COPPER PL. 50 MIN. THICK  
 3. GOLD PL. 3 MIN. THICK OVER NICKEL PL. 50 MIN. THICK  
 4. TEFLON

1. CRIMPED FERRULE  
 HEX CRIMP SIZE ".324"  
 2. CRIMPED CONTACT PIN  
 HEX CRIMP SIZE ".068"

ROHS COMPLIANT

9	FERRULE	NOTE 1	NOTE 2	1	FR-85-95-80 -90-127										
8	CONTACT PIN	NOTE 1	NOTE 3	1	900-1000-8 -C1.9										
7	WASHER	NOTE 1	NOTE 2	1	WS-90-128-08										
6	RING	DELFIN	NATURAL	1	71628-1000-6										
5	RETAINER RING	NOTE 1	NOTE 2	1	900-1000-5										
4	GASKET	RUBBER	RED	1	GS-80-105-15										
3	INSULATOR	NOTE 4	NATURAL	1	900-1000-3-50T										
2	BODY	NOTE 1	NOTE 2	1	900-1121C2-2 -A1										
1	SHELL	NOTE 1	NOTE 2	1	71628-1000-1										
NO.	DESCRIPTION	MATERIAL	FINISH	QTY	DRAWING NO.	SCALE	3/1	ISSUE	A1						

DIMENSIONS ARE IN MILLIMETERS  
 UNLESS OTHERWISE SPECIFIED  
 TOLERANCES  
 0.5-6 =  $\pm 0.2$   
 6-30 =  $\pm 0.4$   
 30-120 =  $\pm 0.6$   
 120-315 =  $\pm 1$   
 315-1000 =  $\pm 1.6$   
 1000-2000 =  $\pm 2.4$

PART NO.		DATE	
APPROVED	DATE	CHECKED	DATE
	03-22-'18		03-22-'18
DRAWN	DATE		
	03-22-'18		

TITLE  
 TNC CRIMP PLUG (FOR LMR-300,  
 SDFB COAXIAL-HOSIWEELL CABLE)  
 DRAWING NO.  
 71628-1121AA-41-50  
 FILE NO. R:\D\G\DWG\71628\1121AA\41\50

**G.L.I.**

A

B

C

D

E

F

A

B

C

D

E

F