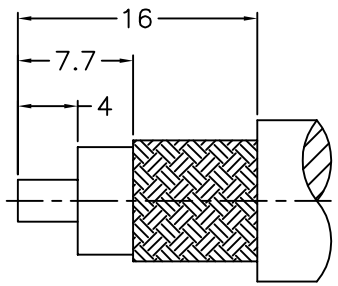


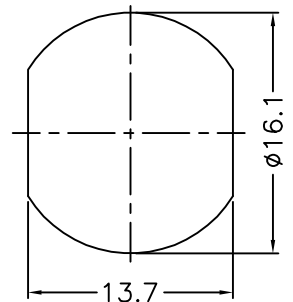
1 2 3 4 5 6 7 8

REVISIONS		
ISS	ZONE	DESCRIPTION\PER REQUEST\DATE

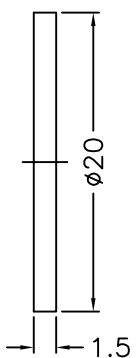
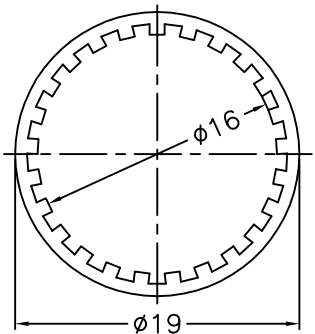
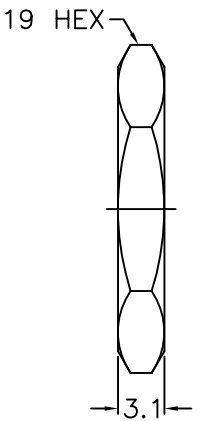
- 1. CRIMPED FERRULE
HEX CRIMP SIZE .429"
- 2. CRIMPED CONTACT PIN
HEX CRIMP SIZE .118"
- 3. MAX. PANEL THICKNESS=6.5mm



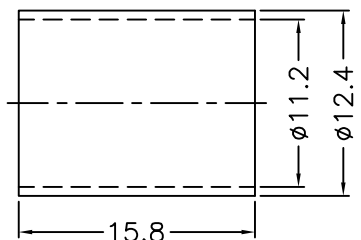
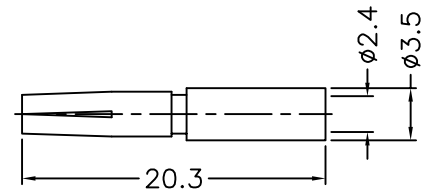
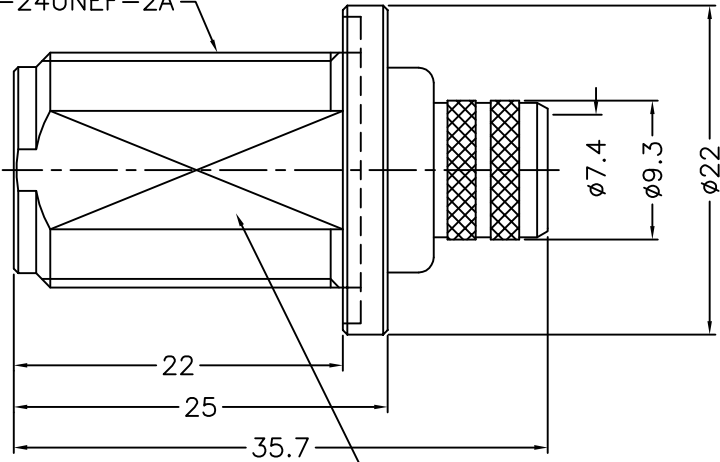
RECOMMENDED
CABLE STRIPPING DIM'S
(建議剝線尺寸)



RECOMMENDED
MOUNTING HOLE
(建議架設孔)



5/8-24UNEF-2A



NOTES: FINISH (PLATING THICKNESS IN MICRO-INCHES)
 1. BRASS
 2. NICKEL PL. 100 MIN. THICK OVER COPPER PL. 50 MIN. THICK
 3. PHOSPHOR BRONZE
 4. GOLD PL. 3 MIN. THICK OVER NICKEL PL. 50 MIN. THICK OVER COPPER PL. 50 MIN. THICK
 5. TEFLON

RoHS COMPLIANT

NO.	DESCRIPTION	MATERIAL	FINISH	Q'TY	DRAWING NO.
8	FERRULE			1	FR-112-124-158
7	CONTACT PIN			1	5824-6421A6-7-2.4
6	HEX NUT			1	HN-19-5824-31
5	LOCK WASHER			1	LW-16-19-06
4	GASKET	SILICONE	RED	1	GS-160-200-15
3	BARREL			1	5824-1000-3-17
2	INSULATOR		NATURAL	1	5824-6421A6-2-50T
1	BODY			1	5824-6421A6-1

DIMENSIONS ARE IN MILLIMETERS				PART NO.	
UNLESS OTHERWISE SPECIFIED TOLERANCES 0.5-6 = ±0.2 6-30 = ±0.4 30-120 = ±0.6 120-315 = ±1 315-1000 = ±1.6 1000-2000 = ±2.4				APPROVED	DATE
					08-31-'15
				CHECKED	DATE
					08-31-'15
				DRAWN	DATE
				ANGELA	08-31-'15

G.L.I.	
TITLE	N BULKHEAD CRIMP JACK (FOR RG-8, 8A, 9, 213, 214)
DRAWING NO.	5824-6421A6-18-50
FILE NO.	R:\D\G\WG\5824\6421A6\18\50

1 2 3 4 5 6 7 8

F
E
D
C
B
A

F
E
D
C
B
A