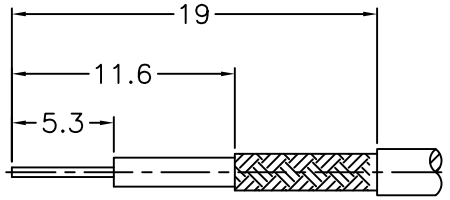
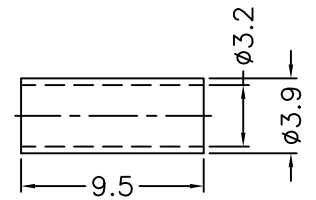
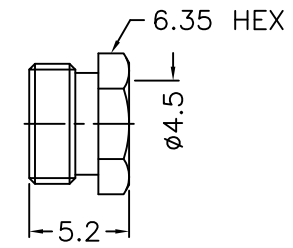
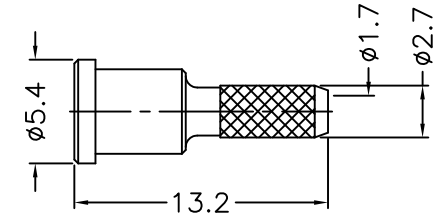
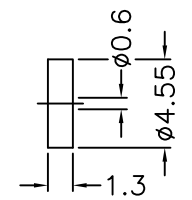
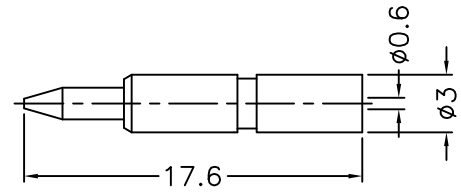
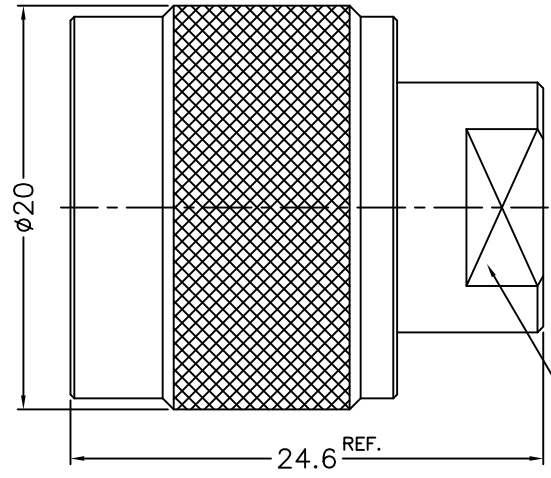


		1		2		3		4		5		6		7		8	
REVISIONS																	
ISS	ZONE	DESCRIPTION\PER REQUEST\DATE															



RECOMMENDED  
CABLE STRIPPING DIM'S  
(建議剝線尺寸)



1. CRIMPED FERRULE  
HEX CRIMP SIZE .128"
2. CRIMPED CONTACT PIN  
HEX CRIMP SIZE .100"

NOTES: FINISH (PLATING THICKNESS IN MICRO-INCHES)  
 1. BRASS  
 2. NICKEL PL. 100 MIN. THICK OVER COPPER PL. 50 MIN. THICK  
 3. GOLD PL. 3 MIN. THICK OVER NICKEL PL. 50 MIN. THICK OVER COPPER PL. 50 MIN. THICK  
 4. TEFLON

11	FERRULE	NOTE 1	NOTE 2	1	FR-32-39-95
10	HEX NUT	NOTE 1	NOTE 2	1	HN-635-1436-52
9	BARREL	NOTE 1	NOTE 2	1	5824-1121G1-9-02
8	INSULATOR	NOTE 4	NATURAL	1	5824-1121G1-8T
7	CONTACT PIN	NOTE 1	NOTE 3	1	5824-1000-8-0.6
6	RETAINER RING	SUS 304	NATURAL	1	5824-1000-7
5	GASKET	SILICONE	RED	1	GS-80-156-15
4	CONTACT BODY	NOTE 1	NOTE 2	1	5824-1000-5
3	INSULATOR	NOTE 4	NATURAL	1	5824-1000-4A
2	BODY	NOTE 1	NOTE 2	1	5824-1121G1-2
1	SHELL	NOTE 1	NOTE 2	1	5824-1000-1
NO.	DESCRIPTION	MATERIAL	FINISH	Q'TY	DRAWING NO.

DIMENSIONS ARE IN MILLIMETERS			
UNLESS OTHERWISE SPECIFIED TOLERANCES			
0.5-6	=	±0.2	
6-30	=	±0.4	
30-120	=	±0.6	
120-315	=	±1	
315-1000	=	±1.6	
1000-2000	=	±2.4	
SCALE	2.5/1	ISSUE	A

PART NO.	
APPROVED	DATE 02-27-'13
CHECKED	DATE 02-27-'13
DRAWN	DATE 02-27-'13

<b>G.L.I.</b>	
TITLE N CRIMP PLUG (FOR RG-174, 188A, 316, LMR100)	
DRAWING NO. 5824-1121G1-02-50	
FILE NO. R:\D\G\DWG\5824\1121G1\02\50	