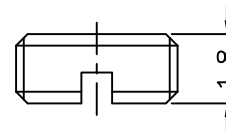
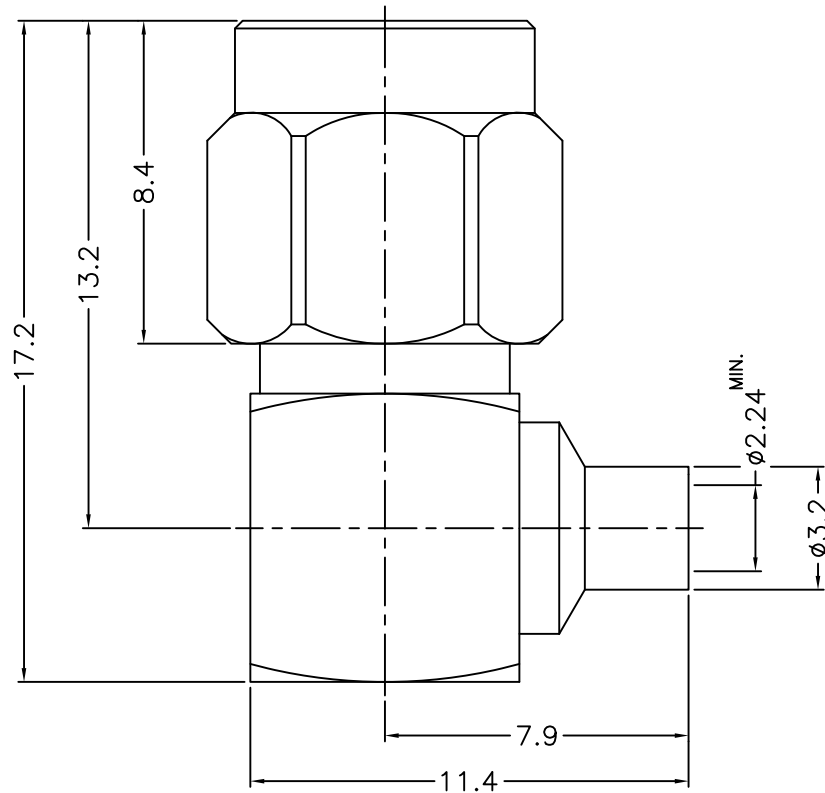
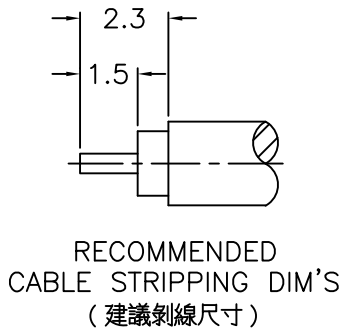


1			2			3			4			5			6			7			8		
REVISIONS																							
ISS	ZONE	DESCRIPTION\PER REQUEST\DATE																					



RoHS COMPLIANT

NOTES: FINISH (PLATING THICKNESS IN MICRO-INCHES)

1. BRASS
2. THIN GOLD OVER NICKEL PL. 50 MIN. THICK OVER COPPER PL. 50 MIN. THICK
3. GOLD PL. 3 MIN. THICK OVER NICKEL PL. 50 MIN. THICK OVER COPPER PL. 50 MIN. THICK
4. TEFLON
5. PASSIVATED

7	COVER	NOTE 1	NOTE 2	1	NUT-4204-18	DIMENSIONS ARE IN MILLIMETERS UNLESS OTHERWISE SPECIFIED TOLERANCES 0.5-6 = ±0.2 6-30 = ±0.4 30-120 = ±0.6 120-315 = ±1 315-1000 = ±1.6 1000-2000 = ±2.4				PART NO.				G.L.I.			
6	GASKET	SILICONE	RED	1	GS-43-60-06					APPROVED							
5	RETAINER RING	SUS 304	NOTE 5	1	1436-1000-4					CHECKED				DATE 11-29-'18			
4	CONTACT PIN	NOTE 1	NOTE 3	1	1436-1182D2-4					DRAWN				DATE 11-29-'18			
3	INSULATOR	NOTE 4	NATURAL	1	1436-1182D2-3-50T					ALAN				DATE 11-29-'18			
2	BODY	NOTE 1	NOTE 2	1	1436-1182D2-2-28	SCALE				5/1							
1	SHELL	NOTE 1	NOTE 2	1	1436-1000-1R	ISSUE				1							
NO.	DESCRIPTION	MATERIAL	FINISH	Q'TY	DRAWING NO.	SCALE	5/1	ISSUE	1	FILE NO. R:\D\G\DWG\1436\1182D2\28\50							

1			2			3			4			5			6			7			8		
---	--	--	---	--	--	---	--	--	---	--	--	---	--	--	---	--	--	---	--	--	---	--	--