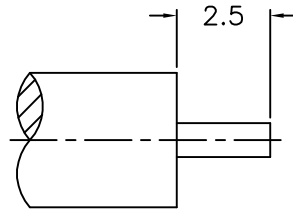


1 2 3 4 5 6 7 8

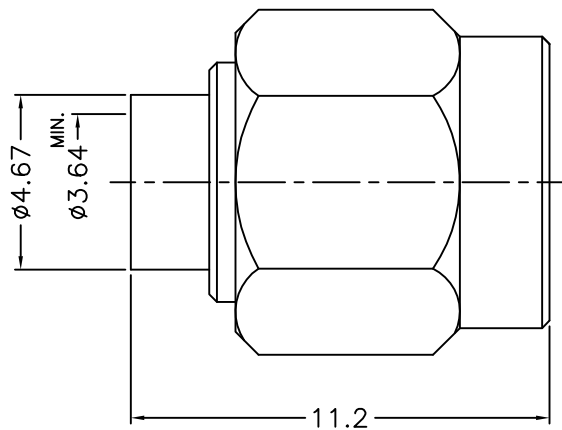
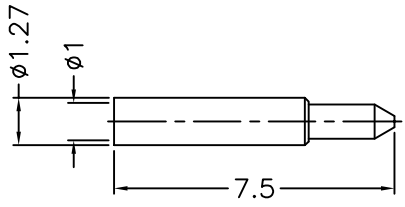
REVISIONS		
ISS	ZONE	DESCRIPTION\PER REQUEST\DATE

F



RECOMMENDED  
CABLE STRIPPING DIM'S  
(建議剝線尺寸)

E



- NOTES: FINISH (PLATING THICKNESS IN MICRO-INCHES)
- BRASS
  - THIN GOLD OVER NICKEL PL. 50 MIN. THICK OVER COPPER PL. 50 MIN. THICK
  - GOLD PL. 3 MIN. THICK OVER NICKEL PL. 50 MIN. THICK OVER COPPER PL. 50 MIN. THICK
  - TEFLON

6	CONTACT PIN	NOTE 1	NOTE 3	1	1436-1181A1-6 -1.0
5	INSULATOR	NOTE 4	NATURAL	1	1436-1181A1-5 -50T
4	GASKET	SILICONE	RED	1	GS-43-60-06
3	RETAINER RING	SUS 303	NATURAL	1	1436-1000-4
2	BODY	NOTE 1	NOTE 2	1	1436-1181A3-2 -29
1	SHELL	NOTE 1	NOTE 2	1	1436-1000-1
NO.	DESCRIPTION	MATERIAL	FINISH	Q'TY	DRAWING NO.

DIMENSIONS ARE IN MILLIMETERS  
UNLESS OTHERWISE SPECIFIED TOLERANCES

0.5-6 = ±0.2  
6-30 = ±0.4  
30-120 = ±0.6  
120-315 = ±1  
315-1000 = ±1.6  
1000-2000 = ±2.4

PART NO.	
APPROVED	DATE 05-13-'14
CHECKED	DATE 05-13-'14
DRAWN	DATE 05-13-'14

<b>G.L.I.</b>	
TITLE	SMA DIRECT SOLDER PLUG (FOR .141 SEMI-RIGID, RG-402/U)
DRAWING NO.	1436-1181A3-29-50
FILE NO.	R:\D\G\DWG\1436\1181A3\29\50

1 2 3 4 5 6 7 8

A

A