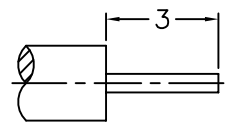
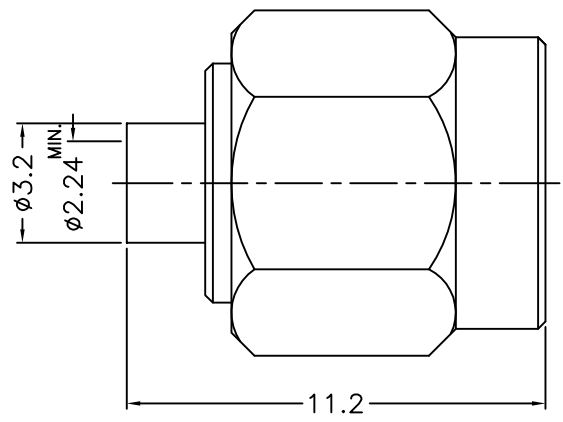
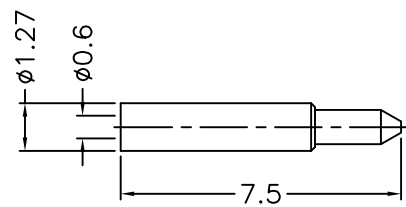
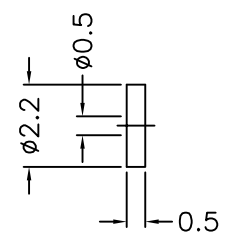


1 2 3 4 5 6 7 8

REVISIONS		
ISS	ZONE	DESCRIPTION\PER REQUEST\DATE



RECOMMENDED
CABLE STRIPPING DIM'S
(建議剝線尺寸)



NOTES: FINISH (PLATING THICKNESS IN MICRO-INCHES)
 1. BRASS
 2. THIN GOLD OVER NICKEL PL. 50 MIN. THICK OVER COPPER PL. 50 MIN. THICK
 3. GOLD PL. 3 MIN. THICK OVER NICKEL PL. 50 MIN. THICK OVER COPPER PL. 50 MIN. THICK
 4. TEFLON

7	INSULATOR	NOTE 4	NATURAL	1	200-1181A1-6T
6	CONTACT PIN	NOTE 1	NOTE 3	1	1436-1181A1-6-0.6
5	INSULATOR	NOTE 4	NATURAL	1	1436-1181A3-5-50T
4	GASKET	SILICONE	RED	1	GS-43-60-06
3	RETAINER RING	SUS 303	NATURAL	1	1436-1000-4
2	BODY	NOTE 1	NOTE 2	1	1436-1181A3-2-28
1	SHELL	NOTE 1	NOTE 2	1	1436-1000-1
NO.	DESCRIPTION	MATERIAL	FINISH	Q'TY	DRAWING NO.

RoHS COMPLIANT

DIMENSIONS ARE IN MILLIMETERS				PART NO.		G.L.I.	
UNLESS OTHERWISE SPECIFIED TOLERANCES				APPROVED	DATE		TITLE
0.5-6	=	±0.2			08-18-'14		SMA SEMI-RIGID PLUG (FOR .085", .086")
6-30	=	±0.4		CHECKED	DATE		DRAWING NO.
30-120	=	±0.6			08-18-'14	1436-1181A3-28-50	
120-315	=	±1		DRAWN	DATE	FILE NO.	
315-1000	=	±1.6			08-18-'14	R:\D\G\DWG\1436\1181A3\28\50	
1000-2000	=	±2.4					

1 2 3 4 5 6 7 8

F
E
D
C
B
A

F
E
D
C
B
A