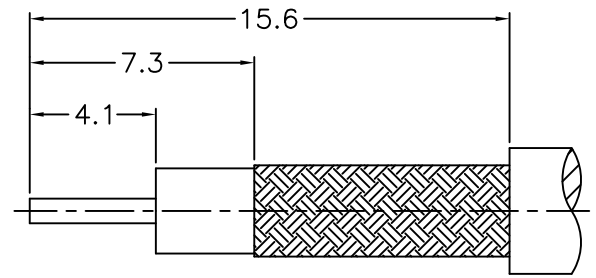
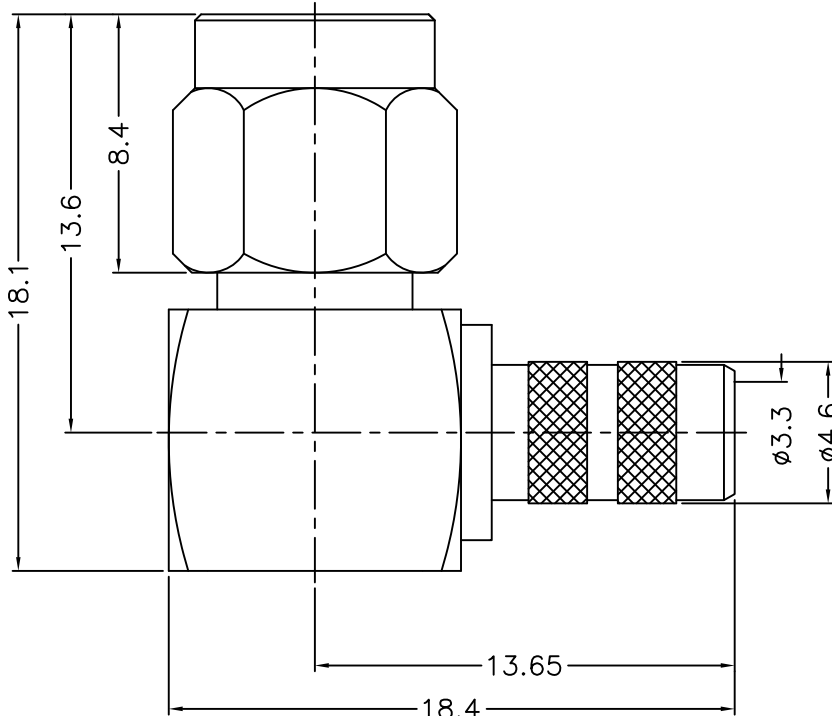
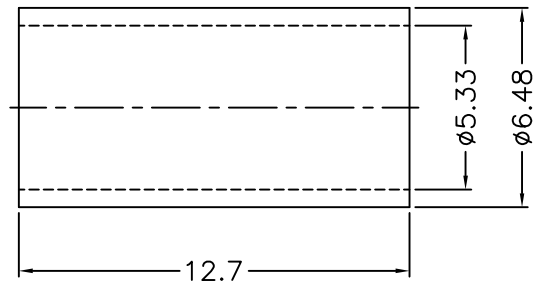


		1		2		3		4		5		6		7		8	
REVISIONS																	
ISS	ZONE	DESCRIPTION\PER REQUEST\DATE															

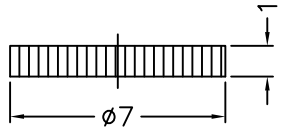


RECOMMENDED
CABLE STRIPPING DIM'S
(建議剝線尺寸)



1. CRIMPED FERRULE
HEX CRIMP SIZE .213"
2. CONTACT PIN TO SOLDER

NOTES: FINISH (PLATING THICKNESS IN MICRO-INCHES)
 1. BRASS
 2. THIN GOLD THICK OVER NICKEL PL. 50 MIN. THICK OVER COPPER PL. 50 MIN. THICK
 3. GOLD PL. 3 MIN. THICK OVER NICKEL PL. 50 MIN. THICK OVER COPPER PL. 50 MIN. THICK
 4. TEFLON



8	FERRULE	COPPER	NOTE 2	1	FR-533-648-127C
7	COVER	NOTE 1	NOTE 2	1	CV-7-1
6	GASKET	SILICONE	RED	1	GS-43-60-06
5	RETAINER RING	SUS 303	NATURAL	1	1436-1000-4
4	CONTACT PIN	NOTE 1	NOTE 3	1	1436-1112A2-4
3	INSULATOR	NOTE 4	NATURAL	1	1436-1112A2-3-50T
2	HOUSING WITH BARREL	NOTE 1	NOTE 2	1	1436-1112A2-2-08
1	SHELL	NOTE 1	NOTE 2	1	1436-1000-1
NO.	DESCRIPTION	MATERIAL	FINISH	Q'TY	DRAWING NO.

DIMENSIONS ARE IN MILLIMETERS
 UNLESS OTHERWISE SPECIFIED TOLERANCES
 0.5-6 = ±0.2
 6-30 = ±0.4
 30-120 = ±0.6
 120-315 = ±1
 315-1000 = ±1.6
 1000-2000 = ±2.4

PART NO.		DATE	
APPROVED		02-21-'11	
CHECKED		02-21-'11	
DRAWN		02-21-'11	

G.L.I.	
TITLE SMA R/A CRIMP PLUG (FOR LMR200 CABLE)	
DRAWING NO. 1436-1112A2-08-50	
FILE NO. R:\D\G\DWG\1436\1112A2\08\50	

		1		2		3		4		5		6		7		8	
--	--	---	--	---	--	---	--	---	--	---	--	---	--	---	--	---	--