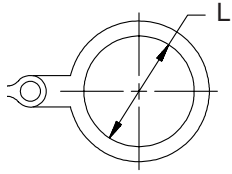


MS3180 and MS3181

Protective Covers

MIL-DTL-26482



MS3181 Optional Ring Attachment

MS3180-12 C A L

Basic Part No. _____
 MS3180 = Plug Cover
 MS3181 = Receptacle Cover

Shell Size _____

Attachment Option _____
 C = Chain
 N = Chain with Ring (MS3181 Only)
 R = Wire Rope

Length
 L = Chain or Rope Length of 5 inches (127.0 mm) Omit for Standard (See K in Table)

Finish
 A = Anodize

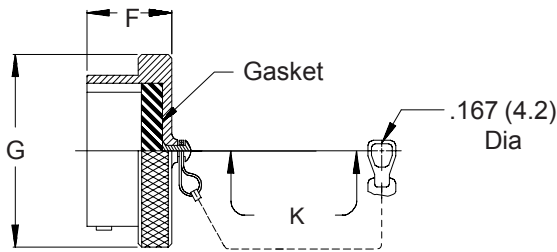
MS3180-12 C **Prior Revision "D" Available**

Basic Part No. _____
 MS3180 = Plug Cover
 MS3181 = Receptacle Cover

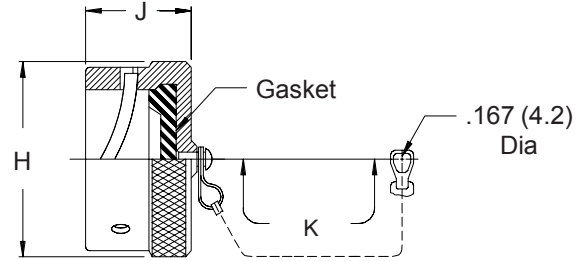
Shell Size _____

Attachment Option (Omit For No Attachment)
 C = Chain
 N = Chain with Ring (MS3181 Only)

Note: Finish is Cadmium Olive Drab



MS3180 Plug Cover



MS3181 Receptacle Cover

TABLE I

Shell Size	F Max	G Dia Max	H Dia Max	J Max	K Standard Length	L Min
8	.562 (14.3)	.719 (18.3)	.734 (18.6)	.562 (14.3)	3.00 (76.2)	.578 (14.7)
10	.562 (14.3)	.844 (21.4)	.859 (21.8)	.562 (14.3)	3.00 (76.2)	.703 (17.9)
12	.562 (14.3)	1.000 (25.4)	1.000 (25.4)	.562 (14.3)	3.50 (88.9)	.891 (22.6)
14	.562 (14.3)	1.125 (28.6)	1.125 (28.6)	.562 (14.3)	3.50 (88.9)	1.016 (25.8)
16	.562 (14.3)	1.250 (31.8)	1.250 (31.8)	.562 (14.3)	3.50 (88.9)	1.141 (29.0)
18	.562 (14.3)	1.375 (34.9)	1.375 (34.9)	.562 (14.3)	3.50 (88.9)	1.266 (32.2)
20	.625 (15.9)	1.500 (38.1)	1.500 (38.1)	.562 (14.3)	4.00 (101.6)	1.391 (35.3)
22	.625 (15.9)	1.625 (41.3)	1.625 (41.3)	.562 (14.3)	4.00 (101.6)	1.516 (38.5)
24	.658 (16.7)	1.750 (44.5)	1.750 (44.5)	.602 (15.3)	4.00 (101.6)	1.641 (41.7)

1. For complete dimensions see applicable Military Specification.
2. Metric dimensions (mm) are indicated in parentheses.

Elimec 03-9592502